

Mindin Rabbit pAb

CatalogNo: YT2763

Key Features

Host Species

- Rabbit

Reactivity

- Human, Mouse, Rat, Monkey

Applications

- WB, IHC

MW

- 37kD (Observed)

Isotype

- IgG

Recommended Dilution Ratios

WB 1:500-2000

IHC 1:50-300

Storage

Storage* -15°C to -25°C/1 year (Do not lower than -25°C)

Formulation Liquid in PBS containing 50% glycerol, 0.5% BSA and 0.02% sodium azide.

Basic Information

Clonality Polyclonal

Immunogen Information

Immunogen The antiserum was produced against synthesized peptide derived from human SPON2. AA range: 71-120

Specificity Mindin Polyclonal Antibody detects endogenous levels of Mindin protein.

Target Information

Gene name SPON2

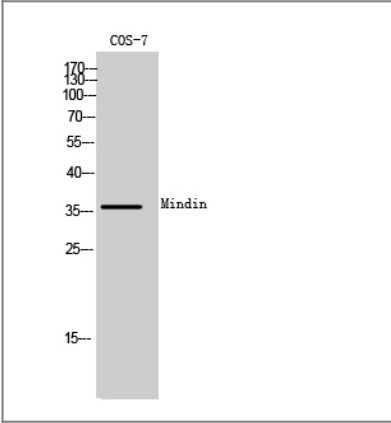
Protein Name	Spondin-2		
	Organism	Gene ID	UniProt ID
	Human	10417;	Q9BUD6;
	Mouse	100689;	Q8BMS2;
	Rat	171569;	Q9WV75;

Cellular Localization Secreted, extracellular space, extracellular matrix .

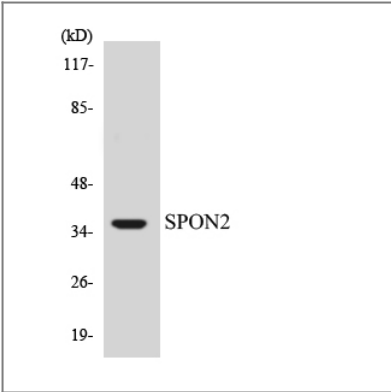
Tissue specificity Expressed in normal lung tissue but not in lung carcinoma cell lines.

Function Function:Cell adhesion protein that promote adhesion and outgrowth of hippocampal embryonic neurons. Binds directly to bacteria and their components and functions as an opsonin for macrophage phagocytosis of bacteria. Essential in the initiation of the innate immune response and represents a unique pattern-recognition molecule in the ECM for microbial pathogens.,similarity:Contains 1 spondin domain.,similarity:Contains 1 TSP type-1 domain.,tissue specificity:Expressed in normal lung tissues but not in lung carcinoma cell lines.,

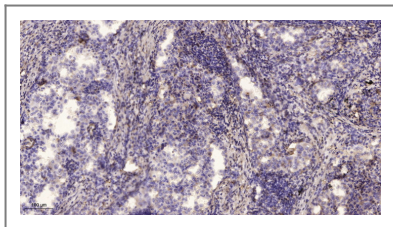
| Validation Data



Western Blot analysis of COS-7 cells using Mindin Polyclonal Antibody



Western blot analysis of the lysates from HUVEC cells using SPON2 antibody.



Immunohistochemical analysis of paraffin-embedded human lung cancer. 1, Antibody was diluted at 1:200(4° overnight). 2, Tris-EDTA,pH9.0 was used for antigen retrieval. 3,Secondary antibody was diluted at 1:200(room temperature, 45min).

| Contact information

Orders: order@immunoway.com
Support: tech@immunoway.com
Telephone: 877-594-3616 (Toll Free), 408-747-0185
Website: <http://www.immunoway.com>
Address: 2200 Ringwood Ave San Jose, CA 95131 USA



Please scan the QR code to access additional product information:
Mindin Rabbit pAb

For Research Use Only. Not for Use in Diagnostic Procedures.

[Antibody](#) | [ELISA Kits](#) | [Protein](#) | [Reagents](#)