

LZK Rabbit pAb

CatalogNo: YT2610

Key Features

Host Species

- Rabbit

Reactivity

- Human, Mouse, Rat

Applications

- WB, IHC, IF, ELISA

MW

- 108kD (Observed)

Isotype

- IgG

Storage

Storage* -15°C to -25°C/1 year (Do not lower than -25°C)

Formulation Liquid in PBS containing 50% glycerol, 0.5% BSA and 0.02% sodium azide.

Recommended Dilution Ratios

WB 1:500-1:2000

IHC 1:100-1:300

ELISA 1:20000

IF 1:50-200

Basic Information

Clonality Polyclonal

Immunogen Information

Immunogen The antiserum was produced against synthesized peptide derived from human M3K13. AA range:151-200

Specificity LZK Polyclonal Antibody detects endogenous levels of LZK protein.

Target Information

Gene name MAP3K13

Protein Name Mitogen-activated protein kinase kinase kinase 13

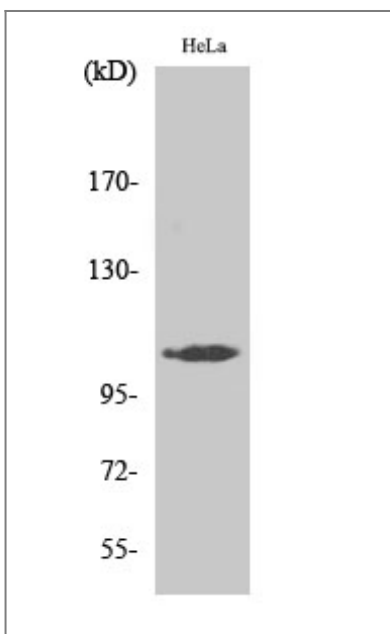
Organism	Gene ID	UniProt ID
Human	9175;	O43283;
Mouse	71751;	Q1HKZ5;

Cellular Localization Cytoplasm . Membrane ; Peripheral membrane protein .

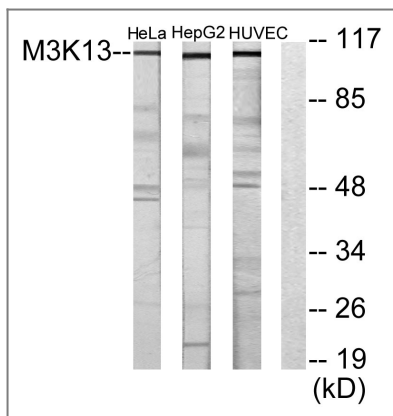
Tissue specificity Expressed in the adult brain, liver, placenta and pancreas, with expression strongest in the pancreas.

Function Catalytic activity:ATP + a protein = ADP + a phosphoprotein.,cofactor:Magnesium.,enzyme regulation:Activated by autophosphorylation and homodimerization.,Function:Activates the JUN N-terminal pathway through activation of the MAP kinase kinase MAP2K7. Acts synergistically with PRDX3 to regulate the activation of NF-kappa-B in the cytosol. This activation is kinase-dependent and involves activating the IKK complex, the IKBKB-containing complex that phosphorylates inhibitors of NF-kappa-B.,PTM:Autophosphorylated on serine and threonine residues.,sequence Caution:Translated as Tyr.,sequence Caution:Wrong choice of CDS.,similarity:Belongs to the protein kinase superfamily. STE Ser/Thr protein kinase family. MAP kinase kinase kinase subfamily.,similarity:Contains 1 protein kinase domain.,subunit:Homodimer; forms dimers through the leucine-zipper motif. Interacts with the C-terminus of MAPK8IP1 through the kinase catalytic domain. Binds PRDX3. Associates with the IKK complex through the kinase domain.,tissue specificity:Expressed in the adult brain, liver, placenta and pancreas, with expression strongest in the pancreas.,

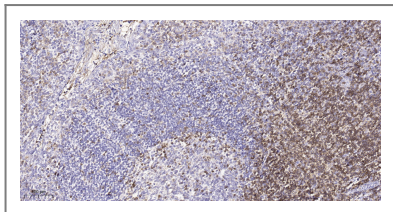
Validation Data



Western Blot analysis of HepG2 cells using LZK Polyclonal Antibody



Western blot analysis of lysates from HeLa, HUVEC, and HepG2 cells, using M3K13 Antibody. The lane on the right is blocked with the synthesized peptide.



Immunohistochemical analysis of paraffin-embedded human tonsil. 1, Tris-EDTA, pH 9.0 was used for antigen retrieval. 2 Antibody was diluted at 1:200 (4° overnight). 3, Secondary antibody was diluted at 1:200 (room temperature, 45min).

Contact information

Orders: order@immunoway.com
 Support: tech@immunoway.com
 Telephone: 877-594-3616 (Toll Free), 408-747-0185
 Website: <http://www.immunoway.com>
 Address: 2200 Ringwood Ave San Jose, CA 95131 USA



Please scan the QR code to access additional product information:
LZK Rabbit pAb

For Research Use Only. Not for Use in Diagnostic Procedures.

[Antibody](#) | [ELISA Kits](#) | [Protein](#) | [Reagents](#)