

KCNH1 Rabbit pAb

CatalogNo: YT2456

Key Features

Host Species

- Rabbit

Reactivity

- Human, Mouse, Rat

Applications

- WB, ELISA, IHC

MW

- 110kD (Observed)

Isotype

- IgG

Storage

Storage*

-15°C to -25°C/1 year (Do not lower than -25°C)

Formulation

Liquid in PBS containing 50% glycerol, 0.5% BSA and 0.02% sodium azide.

Recommended Dilution Ratios

WB 1:500-2000

IHC 1:50-300

ELISA 1:2000-20000

Basic Information

Clonality

Polyclonal

Immunogen Information

Immunogen

The antiserum was produced against synthesized peptide derived from human KCNH1. AA range: 720-769

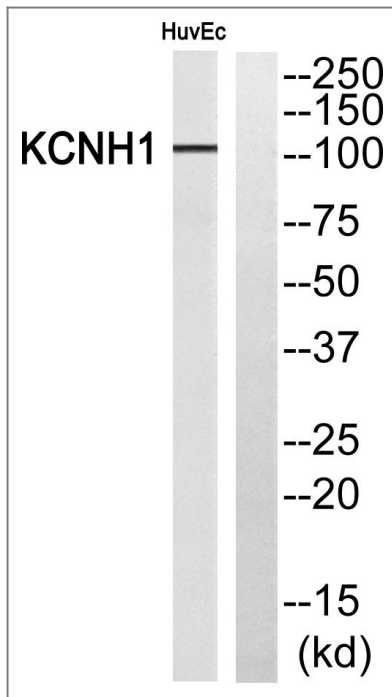
Specificity

KCNH1 Polyclonal Antibody detects endogenous levels of KCNH1 protein.

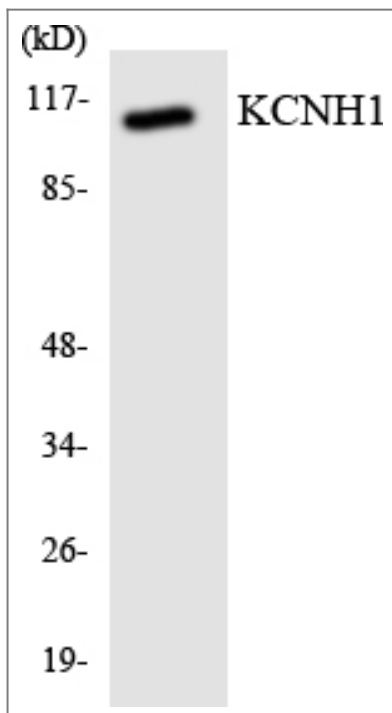
Target Information

Gene name	KCNH1		
Protein Name	Potassium voltage-gated channel subfamily H member 1		
	Organism	Gene ID	UniProt ID
	Human	3756 ;	O95259 ;
	Mouse	16510 ;	Q60603 ;
	Rat	65198 ;	Q63472 ;
Cellular Localization	Cell membrane ; Multi-pass membrane protein . Nucleus inner membrane ; Multi-pass membrane protein . Cell projection, dendrite . Cell projection, axon . Cell junction, synapse, presynaptic cell membrane . Perikaryon . Cell junction, synapse, postsynaptic density membrane . Early endosome membrane . Perinuclear KCNH1 is located to NPC-free islands.		
Tissue specificity	Highly expressed in brain and in myoblasts at the onset of fusion, but not in other tissues. Detected in HeLa (cervical carcinoma), SH-SY5Y (neuroblastoma) and MCF-7 (epithelial tumor) cells, but not in normal epithelial cells.		
Function	Disease:Overexpression of EAG may confer a growth advantage to cancer cells and favor tumor cell proliferation.,Domain:The segment S4 is probably the voltage-sensor and is characterized by a series of positively charged amino acids at every third position.,Function:Pore-forming (alpha) subunit of voltage-gated non-inactivating delayed rectifier potassium channel. Channel properties may be modulated by cAMP and subunit assembly. Mediates IK(NI) current in myoblasts.,similarity:Belongs to the potassium channel family. H (Eag) subfamily.,similarity:Contains 1 cyclic nucleotide-binding domain.,similarity:Contains 1 PAC (PAS-associated C-terminal) domain.,similarity:Contains 1 PAS (PER-ARNT-SIM) domain.,subunit:The potassium channel is probably composed of a homo- or heterotetrameric complex of pore-forming alpha subunits that can associate with modulating beta subunits. Heteromultimer with KCNH5/EAG2. Interacts with ALG10B.,tissue specificity:Highly expressed in brain and in myoblasts at the onset of fusion, but not in other tissues. Detected in HeLa (cervical carcinoma), SH-SY5Y (neuroblastoma) and MCF-7 (epithelial tumor) cells, but not in normal epithelial cells.,		

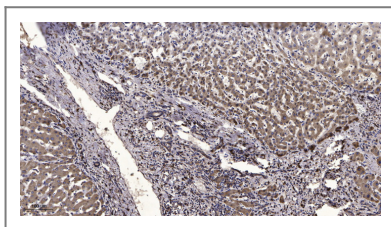
| Validation Data



Western blot analysis of KCNH1 Antibody. The lane on the right is blocked with the KCNH1 peptide.



Western blot analysis of the lysates from COLO205 cells using KCNH1 antibody.



Immunohistochemical analysis of paraffin-embedded human liver cancer. 1, Antibody was diluted at 1:200(4° overnight). 2, Tris-EDTA,pH9.0 was used for antigen retrieval. 3,Secondary antibody was diluted at 1:200(room temperature, 45min).

| Contact information

Orders: order@immunoway.com
Support: tech@immunoway.com
Telephone: 877-594-3616 (Toll Free), 408-747-0185
Website: <http://www.immunoway.com>
Address: 2200 Ringwood Ave San Jose, CA 95131 USA



Please scan the QR code
to access additional
product information:
KCNH1 Rabbit pAb

For Research Use Only. Not for Use in Diagnostic Procedures.

[Antibody](#) | [ELISA Kits](#) | [Protein](#) | [Reagents](#)