

IL-21 Rabbit pAb

CatalogNo: YT2327

Key Features

Host Species

- Rabbit

Reactivity

- Human, Mouse

Applications

- WB, ELISA

MW

- 18kD (Observed)

Isotype

- IgG

Storage

Storage*

-15°C to -25°C/1 year (Do not lower than -25°C)

Formulation

Liquid in PBS containing 50% glycerol, 0.5% BSA and 0.02% sodium azide.

Recommended Dilution Ratios

WB 1:500-1:2000

ELISA 1:20000

Not yet tested in other applications.

Basic Information

Clonality

Polyclonal

Immunogen Information

Immunogen

The antiserum was produced against synthesized peptide derived from human IL21. AA range: 91-140

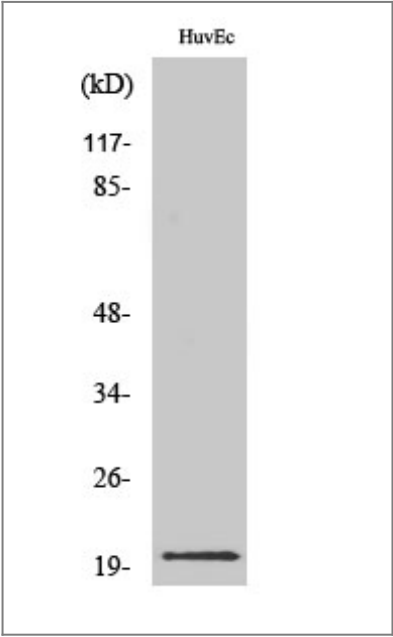
Specificity

IL-21 Polyclonal Antibody detects endogenous levels of IL-21 protein.

Target Information

Gene name	IL21		
Protein Name	Interleukin-21		
	Organism	Gene ID	UniProt ID
	Human	59067 ;	Q9HBE4 ;
	Mouse	60505 ;	Q9ES17 ;
Cellular Localization	Secreted .		
Tissue specificity	Expressed in activated CD4-positive T-cells but not in CD8-positive T-cells, B-cells, or monocytes.		
Function	Function:Cytokine with immunoregulatory activity. May promote the transition between innate and adaptive immunity. Induces the production of IgG(1) and IgG(3) in B-cells (By similarity). May play a role in proliferation and maturation of natural killer (NK) cells in synergy with IL15. May regulate proliferation of mature B- and T-cells in response to activating stimuli. In synergy with IL15 and IL18 stimulates interferon gamma production in T-cells and NK cells. During T-cell mediated immune response may inhibit dendritic cells (DC) activation and maturation.,similarity:Belongs to the IL-15/IL-21 family.,tissue specificity:Expressed in activated CD4-positive T-cells but not in CD8-positive T-cells, B-cells, or monocytes.,		

Validation Data



Western Blot analysis of various cells using IL-21 Polyclonal Antibody diluted at 1:500

Contact information

Orders: order@immunoway.com
Support: tech@immunoway.com
Telephone: 877-594-3616 (Toll Free), 408-747-0185
Website: <http://www.immunoway.com>
Address: 2200 Ringwood Ave San Jose, CA 95131 USA



Please scan the QR code
to access additional
product information:
IL-21 Rabbit pAb

For Research Use Only. Not for Use in Diagnostic Procedures.

[Antibody](#) | [ELISA Kits](#) | [Protein](#) | [Reagents](#)