

## IL-17R $\alpha$ Rabbit pAb

CatalogNo: YT2318

### Key Features

#### Host Species

- Rabbit

#### Reactivity

- Human, Mouse

#### Applications

- WB, ELISA

#### MW

- 90kD (Observed)

#### Isotype

- IgG

### Recommended Dilution Ratios

**WB 1:500-1:2000**

**ELISA 1:40000**

**Not yet tested in other applications.**

### Storage

#### Storage\*

-15°C to -25°C/1 year (Do not lower than -25°C)

#### Formulation

Liquid in PBS containing 50% glycerol, 0.5% BSA and 0.02% sodium azide.

### Basic Information

#### Clonality

Polyclonal

### Immunogen Information

#### Immunogen

The antiserum was produced against synthesized peptide derived from human IL17RA. AA range: 141-190

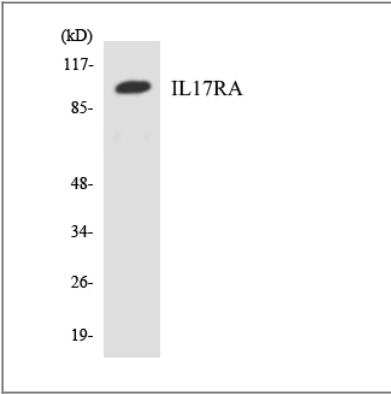
#### Specificity

IL-17R $\alpha$  Polyclonal Antibody detects endogenous levels of IL-17R $\alpha$  protein.

### Target Information

Gene name	IL17RA		
Protein Name	Interleukin-17 receptor A		
	Organism	Gene ID	UniProt ID
	Human	<a href="#">23765;</a>	<a href="#">Q96F46;</a>
	Mouse	<a href="#">16172;</a>	<a href="#">Q60943;</a>
Cellular Localization	[Isoform 1]: Cell membrane ; Single-pass type I membrane protein .; [Isoform 2]: Secreted .		
Tissue specificity	Widely expressed.		
Function	Function:Receptor for IL17A. Binds its ligand with low affinity, suggesting that additional components are involved in IL17A-induced signaling.,PTM:Glycosylated.,tissue specificity:Widely expressed.,		

| Validation Data



Western blot analysis of the lysates from HeLa cells using IL17RA antibody.

| Contact information

Orders: [order@immunoway.com](mailto:order@immunoway.com)  
 Support: [tech@immunoway.com](mailto:tech@immunoway.com)  
 Telephone: 877-594-3616 (Toll Free), 408-747-0185  
 Website: <http://www.immunoway.com>  
 Address: 2200 Ringwood Ave San Jose, CA 95131 USA



Please scan the QR code  
 to access additional  
 product information:  
**IL-17Rα Rabbit pAb**