

HMG-14 Rabbit pAb

CatalogNo: YT2184

Key Features

Host Species

- Rabbit

Reactivity

- Human, Mouse, Rat

Applications

- IHC, IF, ELISA

MW

- 11kD (Calculated)

Isotype

- IgG

Storage

Storage*

-15°C to -25°C/1 year (Do not lower than -25°C)

Formulation

Liquid in PBS containing 50% glycerol, 0.5% BSA and 0.02% sodium azide.

Recommended Dilution Ratios

IHC 1:100-1:300

IF 1:200-1:1000

ELISA 1:20000

Not yet tested in other applications.

Basic Information

Clonality

Polyclonal

Immunogen Information

Immunogen

The antiserum was produced against synthesized peptide derived from human HMG14. AA range:10-59

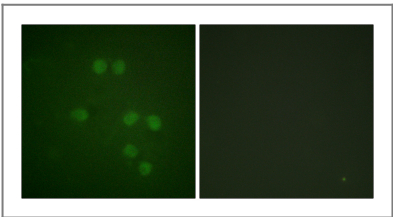
Specificity

HMG-14 Polyclonal Antibody detects endogenous levels of HMG-14 protein.

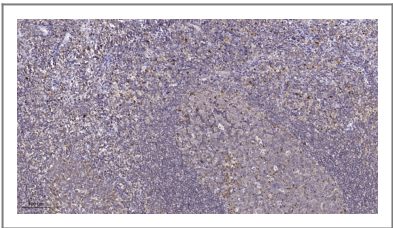
Target Information

Gene name	HMGN1		
Protein Name	Non-histone chromosomal protein HMG-14		
	Organism	Gene ID	UniProt ID
	Human	3150;	P05114;
	Mouse	15312;	P18608;
Cellular Localization	Nucleus. Cytoplasm. Cytoplasmic enrichment upon phosphorylation. The RNA edited version localizes to the nucleus.		
Tissue specificity	Bone marrow,Brain,Epithelium,Liver,Ovary,Pooled,Skin,		
Function	<p>Function: Binds to the inner side of the nucleosomal DNA thus altering the interaction between the DNA and the histone octamer. May be involved in the process which maintains transcribable genes in a unique chromatin conformation. Inhibits the phosphorylation of nucleosomal histones H3 and H2A by RPS6KA5/MSK1 and RPS6KA3/RSK2.,mass spectrometry: PubMed:10739259,PTM:Phosphorylation on Ser-21 and Ser-25 weakens binding to nucleosomes and increases the rate of H3 phosphorylation (By similarity). Phosphorylation favors cytoplasmic localization.,RNA editing:Partially edited. A new initiator methionine may be created by a single uridine insertion in the 5'-UTR, causing an N-terminal extension of 45 amino acids. The existence of the RNA edited version is supported by direct protein sequencing by MS/MS of the following peptides specific to that version: 23-31 and 40-48. The RNA edited version is called ET-HMGN1.,similarity:Belongs to the HMGN family.,subcellular location:Cytoplasmic enrichment upon phosphorylation. The RNA edited version localizes to the nucleus.,</p>		

| Validation Data



Immunofluorescence analysis of HepG2 cells, using HMG14 Antibody. The picture on the right is blocked with the synthesized peptide.



Immunohistochemical analysis of paraffin-embedded human tonsil. 1, Tris-EDTA,pH9.0 was used for antigen retrieval. 2 Antibody was diluted at 1:200(4° overnight.3,Secondary antibody was diluted at 1:200(room temperature, 45min).

| Contact information

Orders: order@immunoway.com
Support: tech@immunoway.com
Telephone: 877-594-3616 (Toll Free), 408-747-0185
Website: <http://www.immunoway.com>
Address: 2200 Ringwood Ave San Jose, CA 95131 USA



Please scan the QR code
to access additional
product information:
HMG-14 Rabbit pAb

For Research Use Only. Not for Use in Diagnostic Procedures.

[Antibody](#) | [ELISA Kits](#) | [Protein](#) | [Reagents](#)