

HLA-DO β Rabbit pAb

CatalogNo: YT2178

| Key Features

Host Species

- Rabbit

Reactivity

- Human

Applications

- WB,ELISA

MW

- 30kD (Observed)

Isotype

- IgG

| Recommended Dilution Ratios

WB 1:500-1:2000

ELISA 1:40000

Not yet tested in other applications.

| Storage

Storage*

-15°C to -25°C/1 year(Do not lower than -25°C)

Formulation

Liquid in PBS containing 50% glycerol, 0.5% BSA and 0.02% sodium azide.

| Basic Information

Clonality

Polyclonal

| Immunogen Information

Immunogen

The antiserum was produced against synthesized peptide derived from human HLA-DOB. AA range:1-50

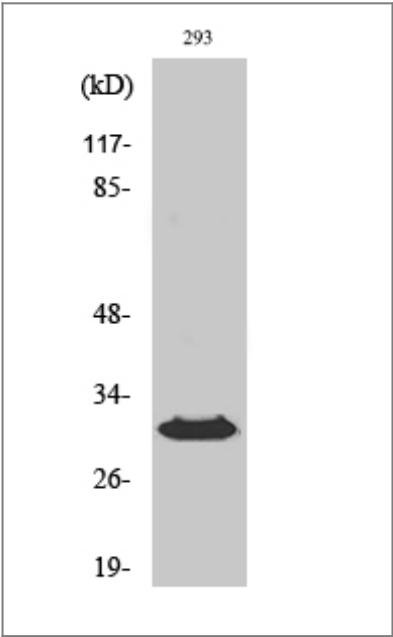
Specificity

HLA-DO β Polyclonal Antibody detects endogenous levels of HLA-DO β protein.

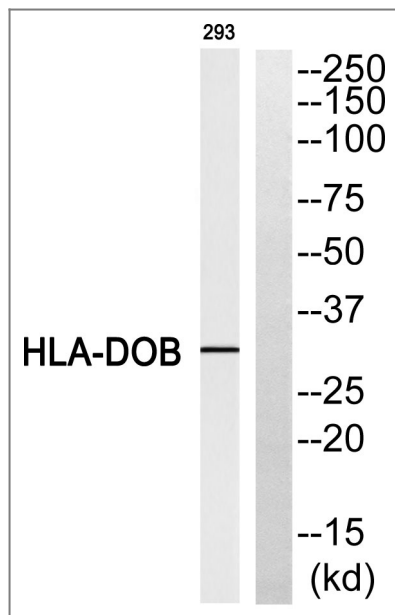
| Target Information

Gene name	HLA-DOB		
Protein Name	HLA class II histocompatibility antigen DO beta chain		
	Organism	Gene ID	UniProt ID
	Human	3112 ;	P13765 ;
Cellular Localization	Endosome membrane; Single-pass type I membrane protein. Lysosome membrane; Single-pass type I membrane protein. Complexes with HLA-DM molecule during intracellular transport and in endosomal/lysosomal compartments. Heterotetramerization is necessary to exit the ER.		
Tissue specificity	B-cell,		
Function	Function:Important modulator in the HLA class II restricted antigen presentation pathway by interaction with the HLA-DM molecule.,polymorphism:The following alleles of DOB are known: DOB*0101, DOB*0102, DOB*0103 and DOB*0104. The sequence shown is that of DOB*0101.,similarity:Belongs to the MHC class II family.,similarity:Contains 1 Ig-like C1-type (immunoglobulin-like) domain.,subunit:Heterodimer of an alpha chain (DOA) and a beta chain (DOB).,		

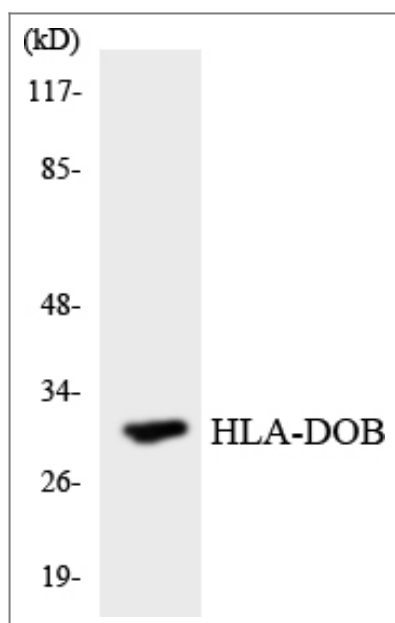
Validation Data



Western Blot analysis of various cells using HLA-DOβ Polyclonal Antibody diluted at 1:1000



Western blot analysis of HLA-DOB Antibody. The lane on the right is blocked with the HLA-DOB peptide.



Western blot analysis of the lysates from HeLa cells using HLA-DOB antibody.

Contact information

Orders: order@immunoway.com
 Support: tech@immunoway.com
 Telephone: 877-594-3616 (Toll Free), 408-747-0185
 Website: <http://www.immunoway.com>
 Address: 2200 Ringwood Ave San Jose, CA 95131 USA



Please scan the QR code to access additional product information:
HLA-DO β Rabbit pAb