

HGK Rabbit pAb

CatalogNo: YT2130 **Orthogonal Validated** 

Key Features

Host Species

- Rabbit

Reactivity

- Human, Mouse

Applications

- WB, IF, ELISA

MW

- 142kD (Observed)

Isotype

- IgG

Storage

Storage* -15°C to -25°C/1 year (Do not lower than -25°C)**Formulation** Liquid in PBS containing 50% glycerol, 0.5% BSA and 0.02% sodium azide.

Recommended Dilution Ratios

WB 1:500-1:2000**IF 1:200-1:1000****ELISA 1:40000****Not yet tested in other applications.**

Basic Information

Clonality Polyclonal

Immunogen Information

Immunogen The antiserum was produced against synthesized peptide derived from human MEKKK 4. AA range:406-455**Specificity** HGK Polyclonal Antibody detects endogenous levels of HGK protein.

Target Information

Gene name MAP4K4

Protein Name Mitogen-activated protein kinase kinase kinase kinase 4

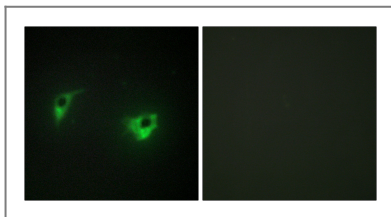
Organism	Gene ID	UniProt ID
Human	9448 ;	O95819 ;
Mouse	26921 ;	P97820 ;

Cellular Localization Cytoplasm .

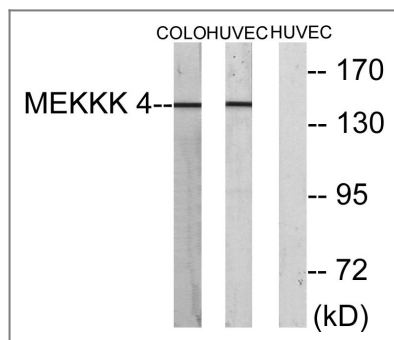
Tissue specificity Widely expressed. Isoform 5 is abundant in the brain. Isoform 4 is predominant in the liver, skeletal muscle and placenta.

Function Catalytic activity:ATP + a protein = ADP + a phosphoprotein.,cofactor:Magnesium.,Function:Serine/threonine kinase that may play a role in the response to environmental stress and cytokines such as TNF-alpha. Appears to act upstream of the JUN N-terminal pathway.,PTM:Phosphorylated upon DNA damage, probably by ATM or ATR.,similarity:Belongs to the protein kinase superfamily.,similarity:Belongs to the protein kinase superfamily. STE Ser/Thr protein kinase family. STE20 subfamily.,similarity:Contains 1 CNH domain.,similarity:Contains 1 protein kinase domain.,subunit:Interacts with the SH3 domain of the adapter proteins Nck (By similarity). Binds, via its CNH regulatory domain, to the N-terminal region of SPG3A.,tissue specificity:Appears to be ubiquitous, expressed in all tissue types examined. Isoform 5 appears to be more abundant in the brain, isoform 4 is predominant in the liver, skeletal muscle and placenta.,

Validation Data



Immunofluorescence analysis of A549 cells, using MEKKK 4 Antibody. The picture on the right is blocked with the synthesized peptide.



Western blot analysis of lysates from HUVEC and COLO cells, using MEKKK 4 Antibody. The lane on the right is blocked with the synthesized peptide.

Contact information

Orders: order@immunoway.com
Support: tech@immunoway.com
Telephone: 877-594-3616 (Toll Free), 408-747-0185
Website: http://www.immunoway.com
Address: 2200 Ringwood Ave San Jose, CA 95131 USA



Please scan the QR code
to access additional
product information:
HGK Rabbit pAb

For Research Use Only. Not for Use in Diagnostic Procedures.

[Antibody](#) | [ELISA Kits](#) | [Protein](#) | [Reagents](#)