

GSTT1/4 Rabbit pAb

CatalogNo: YT2084

Key Features

Host Species

- Rabbit

Reactivity

- Human, Mouse, Rat

Applications

- WB, ELISA

MW

- 30kD (Observed)

Isotype

- IgG

Storage

Storage* -15°C to -25°C/1 year (Do not lower than -25°C)

Formulation Liquid in PBS containing 50% glycerol, 0.5% BSA and 0.02% sodium azide.

Recommended Dilution Ratios

WB 1:500-1:2000

ELISA 1:40000

Not yet tested in other applications.

Basic Information

Clonality Polyclonal

Immunogen Information

Immunogen The antiserum was produced against synthesized peptide derived from human GSTT1/4. AA range:10-59

Specificity GSTT1/4 Polyclonal Antibody detects endogenous levels of GSTT1/4 protein.

Target Information

Gene name GSTT1/GSTT4

Protein Name Glutathione S-transferase theta-1/Glutathione S-transferase theta-4

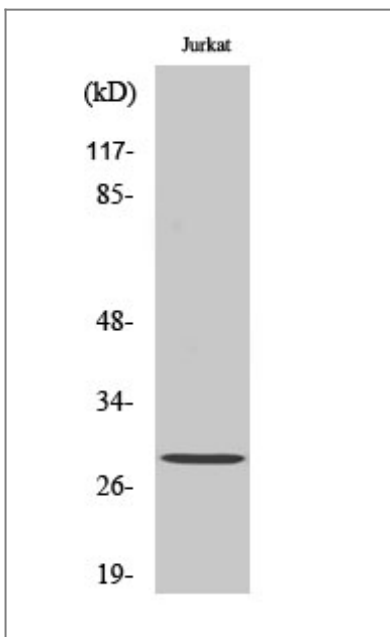
Organism	Gene ID	UniProt ID
Human	2952 ;	P30711 ; A8MPT4 ;

Cellular Localization Cytoplasm.

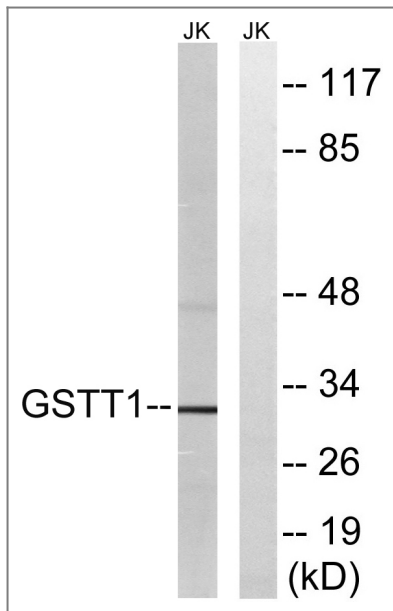
Tissue specificity Found in erythrocyte. Expressed at low levels in liver. In lung, expressed at low levels in Clara cells and ciliated cells at the alveolar/bronchiolar junction. Absent from epithelial cells of larger bronchioles.

Function Catalytic activity:RX + glutathione = HX + R-S-glutathione.,Function:Conjugation of reduced glutathione to a wide number of exogenous and endogenous hydrophobic electrophiles. Acts on 1,2-epoxy-3-(4-nitrophenoxy)propane, phenethylisothiocyanate 4-nitrobenzyl chloride and 4-nitrophenethyl bromide. Displays glutathione peroxidase activity with cumene hydroperoxide.,online information:The Singapore human mutation and polymorphism database,polymorphism:The GSTT1 gene is absent from 38% of the population. The presence or absence of the GSTT1 gene is coincident with the conjugator (GSST1+) and non-conjugator (GSTT1-) phenotypes respectively. The GSTT1+ phenotype can catalyze the glutathione conjugation of dichloromethane.,similarity:Belongs to the GST superfamily. Theta family.,similarity:Contains 1 GST C-terminal domain.,similarity:Contains 1 GST N-terminal domain.,subunit:Homodimer.,tissue specificity:Found in erythrocyte. Expressed at low levels in liver. In lung, expressed at low levels in Clara cells and ciliated cells at the alveolar/bronchiolar junction. Absent from epithelial cells of larger bronchioles.,

Validation Data



Western Blot analysis of various cells using GSTT1/4 Polyclonal Antibody



Western blot analysis of lysates from Jurkat cells, using GSTT1/4 Antibody. The lane on the right is blocked with the synthesized peptide.

Contact information

Orders: order@immunoway.com
Support: tech@immunoway.com
Telephone: 877-594-3616 (Toll Free), 408-747-0185
Website: <http://www.immunoway.com>
Address: 2200 Ringwood Ave San Jose, CA 95131 USA



Please scan the QR code to access additional product information:
GSTT1/4 Rabbit pAb

For Research Use Only. Not for Use in Diagnostic Procedures.

[Antibody](#) | [ELISA Kits](#) | [Protein](#) | [Reagents](#)