

## GRO $\gamma$ Rabbit pAb

CatalogNo: YT2075

Orthogonal Validated 

### Key Features

**Host Species**

- Rabbit

**Reactivity**

- Human,Rat,Mouse,

**Applications**

- IHC,IF,ELISA

**MW**

- 11kD (Calculated)

**Isotype**

- IgG

### Recommended Dilution Ratios

**IHC 1:100-1:300****ELISA 1:10000****IF 1:50-200**

### Storage

**Storage\***

-15°C to -25°C/1 year(Do not lower than -25°C)

**Formulation**

Liquid in PBS containing 50% glycerol, 0.5% BSA and 0.02% sodium azide.

### Basic Information

**Clonality**

Polyclonal

### Immunogen Information

**Immunogen**

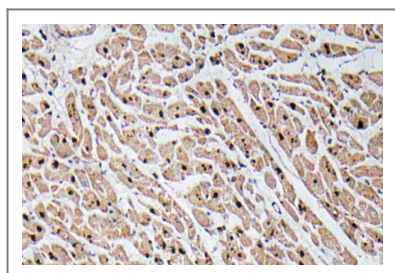
The antiserum was produced against synthesized peptide derived from human GROgamma. AA range:58-107

**Specificity**GRO $\gamma$  Polyclonal Antibody detects endogenous levels of GRO $\gamma$  protein.

### Target Information

<b>Gene name</b>	CXCL3		
<b>Protein Name</b>	C-X-C motif chemokine 3		
	<b>Organism</b>	<b>Gene ID</b>	<b>UniProt ID</b>
	Human	<a href="#">2921</a> ;	<a href="#">P19876</a> ;
	Mouse		<a href="#">Q6W5C0</a> ;
<b>Cellular Localization</b>	Secreted.		
<b>Tissue specificity</b>	Histiocytic lymphoma,Lung,Peripheral blood monocyte,Placenta,		
<b>Function</b>	Function:Ligand for CXCR2 (By similarity). Has chemotactic activity for neutrophils. May play a role in inflammation and exert its effects on endothelial cells in an autocrine fashion. In vitro, the processed form GRO-gamma(5-73) shows a fivefold higher chemotactic activity for neutrophilic granulocytes.,online information: CXCL3 entry,PTM:N-terminal processed form GRO-gamma(5-73) is produced by proteolytic cleavage after secretion from peripheral blood monocytes.,similarity:Belongs to the intercrine alpha (chemokine CxC) family.,		

## Validation Data



Immunohistochemistry analysis of GROα antibody in paraffin-embedded human heart tissue.

## Contact information

Orders: [order@immunoway.com](mailto:order@immunoway.com)  
 Support: [tech@immunoway.com](mailto:tech@immunoway.com)  
 Telephone: 877-594-3616 (Toll Free), 408-747-0185  
 Website: <http://www.immunoway.com>  
 Address: 2200 Ringwood Ave San Jose, CA 95131 USA



Please scan the QR code  
 to access additional  
 product information:  
**GROγ Rabbit pAb**