

GPR82 Rabbit pAb

CatalogNo: YT2031

Key Features

Host Species

- Rabbit

Reactivity

- Human, Mouse

Applications

- WB, ELISA

MW

- 35kD (Observed)

Isotype

- IgG

Storage

Storage* -15°C to -25°C/1 year (Do not lower than -25°C)

Formulation Liquid in PBS containing 50% glycerol, 0.5% BSA and 0.02% sodium azide.

Recommended Dilution Ratios

WB 1:500-1:2000

ELISA 1:10000

Not yet tested in other applications.

Basic Information

Clonality Polyclonal

Immunogen Information

Immunogen The antiserum was produced against synthesized peptide derived from human GPR82. AA range:121-170

Specificity GPR82 Polyclonal Antibody detects endogenous levels of GPR82 protein.

Target Information

Gene name GPR82

Protein Name Probable G-protein coupled receptor 82

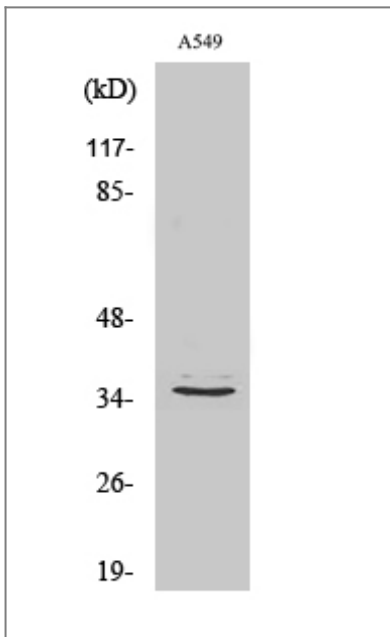
Organism	Gene ID	UniProt ID
Human	27197 ;	Q96P67 ;
Mouse	319200 ;	Q8BZR0 ;

Cellular Localization Cell membrane; Multi-pass membrane protein.

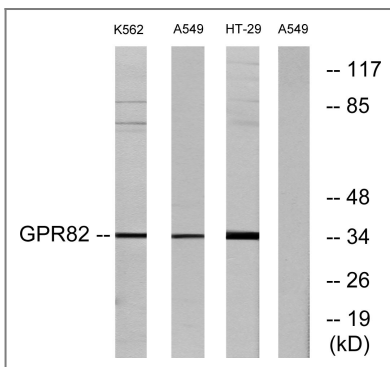
Tissue specificity Placenta,Thyroid,

Function Function:Orphan receptor.,similarity:Belongs to the G-protein coupled receptor 1 family.,

Validation Data



Western Blot analysis of various cells using GPR82 Polyclonal Antibody



Western blot analysis of lysates from A549, K562, and HT-29 cells, using GPR82 Antibody. The lane on the right is blocked with the synthesized peptide.

| Contact information

Orders: order@immunoway.com
Support: tech@immunoway.com
Telephone: 877-594-3616 (Toll Free), 408-747-0185
Website: <http://www.immunoway.com>
Address: 2200 Ringwood Ave San Jose, CA 95131 USA



Please scan the QR code
to access additional
product information:
GPR82 Rabbit pAb

For Research Use Only. Not for Use in Diagnostic Procedures.

[Antibody](#) | [ELISA Kits](#) | [Protein](#) | [Reagents](#)