

GnRH-R Rabbit pAb

CatalogNo: YT1941

Orthogonal Validated 

Key Features

Host Species

- Rabbit

Reactivity

- Human, Mouse

Applications

- WB, IF, ELISA

MW

- 37kD (Observed)

Isotype

- IgG

Recommended Dilution Ratios

WB 1:500-1:2000**IF 1:200-1:1000****ELISA 1:5000****Not yet tested in other applications.**

Storage

Storage*

-15°C to -25°C/1 year (Do not lower than -25°C)

Formulation

Liquid in PBS containing 50% glycerol, 0.5% BSA and 0.02% sodium azide.

Basic Information

Clonality

Polyclonal

Immunogen Information

Immunogen

The antiserum was produced against synthesized peptide derived from human GNRHR. AA range: 41-90

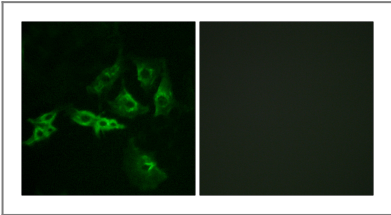
Specificity

GnRH-R Polyclonal Antibody detects endogenous levels of GnRH-R protein.

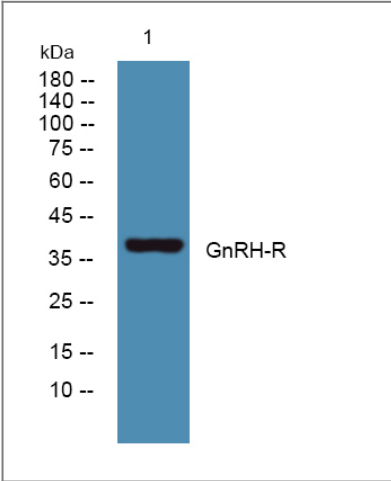
Target Information

Gene name	GNRHR		
Protein Name	Gonadotropin-releasing hormone receptor		
	Organism	Gene ID	UniProt ID
	Human	2798 ;	P30968 ;
	Mouse	14715 ;	Q01776 ;
Cellular Localization	Cell membrane; Multi-pass membrane protein.		
Tissue specificity	Pituitary, ovary, testis, breast and prostate but not in liver and spleen.		
Function	<p>Disease:Defects in GNRHR are a cause of fertile eunuch syndrome [MIM:228300]. Fertile eunuch syndrome is a mild phenotypic form of HH going with the presence of normal testicular size and some degree of spermatogenesis.,Disease:Defects in GNRHR are a cause of idiopathic hypogonadotropic hypogonadism (IHH) [MIM:146110]. IHH is defined as a deficiency of the pituitary secretion of follicle-stimulating hormone and luteinizing hormone, which results in the impairment of pubertal maturation and of reproductive function.,Function:Receptor for gonadotropin releasing hormone (GnRH) that mediate the action of GnRH to stimulate the secretion of the gonadotropic hormones (LH and FSH). This receptor mediates its action by association with G proteins that activate a phosphatidylinositol-calcium second messenger system. Isoform 2 may act a an inhibitor of GnRH-R signaling.,similarity:Belongs to the G-protein coupled receptor 1 family.,tissue specificity:Pituitary, ovary, testis, breast and prostate but not in liver and spleen.,</p>		

| Validation Data



Immunofluorescence analysis of A549 cells, using GNRHR Antibody. The picture on the right is blocked with the synthesized peptide.



Western blot analysis of lysates from A431 cells, primary antibody was diluted at 1:1000, 4°over night

| Contact information

Orders: order@immunoway.com
Support: tech@immunoway.com
Telephone: 877-594-3616 (Toll Free), 408-747-0185
Website: <http://www.immunoway.com>
Address: 2200 Ringwood Ave San Jose, CA 95131 USA



Please scan the QR code
to access additional
product information:

GnRH-R Rabbit pAb

For Research Use Only. Not for Use in Diagnostic Procedures.

[Antibody](#) | [ELISA Kits](#) | [Protein](#) | [Reagents](#)