

## GnRH I Rabbit pAb

CatalogNo: YT1940

### Key Features

#### Host Species

- Rabbit

#### Reactivity

- Human,Rat,Mouse,

#### Applications

- IHC,IF,ELISA

#### MW

- 10kD (Calculated)

#### Isotype

- IgG

### Recommended Dilution Ratios

IHC 1:100-1:300

ELISA 1:10000

IF 1:50-200

### Storage

#### Storage\*

-15°C to -25°C/1 year(Do not lower than -25°C)

#### Formulation

Liquid in PBS containing 50% glycerol, 0.5% BSA and 0.02% sodium azide.

### Basic Information

#### Clonality

Polyclonal

### Immunogen Information

#### Immunogen

The antiserum was produced against synthesized peptide derived from human GnRH I. AA range:43-92

#### Specificity

GnRH I Polyclonal Antibody detects endogenous levels of GnRH I protein.

### Target Information

**Gene name** GNRH1

**Protein Name** Progonadoliberin-1

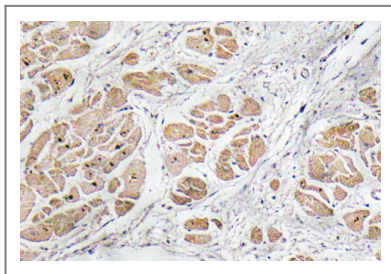
Organism	Gene ID	UniProt ID
Human	<a href="#">2796</a> ;	<a href="#">P01148</a> ;
Mouse		<a href="#">P13562</a> ;

**Cellular Localization** Secreted.

**Tissue specificity** Brain,

**Function** Function:Stimulates the secretion of gonadotropins; it stimulates the secretion of both luteinizing and follicle-stimulating hormones.,online information:Gonadotropin-releasing hormone entry,pharmaceutical:Available under the names Factrel (Ayerst Labs), Lutrepulse or Lutrelef (Ferring Pharmaceuticals) and Relisorm (Serono). Used in evaluating hypothalamic-pituitary gonadotropic function.,similarity:Belongs to the GnRH family.,

## | Validation Data



Immunohistochemistry analysis of GnRH I antibody in paraffin-embedded human heart tissue.

## | Contact information

Orders: [order@immunoway.com](mailto:order@immunoway.com)  
Support: [tech@immunoway.com](mailto:tech@immunoway.com)  
Telephone: 877-594-3616 (Toll Free), 408-747-0185  
Website: <http://www.immunoway.com>  
Address: 2200 Ringwood Ave San Jose, CA 95131 USA



Please scan the QR code to access additional product information:  
**GnRH I Rabbit pAb**