

## Gemin3 Rabbit pAb

CatalogNo: YT1893

### Key Features

#### Host Species

- Rabbit

#### Reactivity

- Human, Mouse

#### Applications

- WB, ELISA

#### MW

- 90kD (Observed)

#### Isotype

- IgG

### Storage

**Storage\*** -15°C to -25°C/1 year (Do not lower than -25°C)

**Formulation** Liquid in PBS containing 50% glycerol, 0.5% BSA and 0.02% sodium azide.

### Recommended Dilution Ratios

**WB 1:500-1:2000**

**ELISA 1:40000**

**Not yet tested in other applications.**

### Basic Information

**Clonality** Polyclonal

### Immunogen Information

**Immunogen** The antiserum was produced against synthesized peptide derived from human DDX20. AA range: 273-322

**Specificity** Gemin3 Polyclonal Antibody detects endogenous levels of Gemin3 protein.

### Target Information

**Gene name** DDX20

**Protein Name** Probable ATP-dependent RNA helicase DDX20

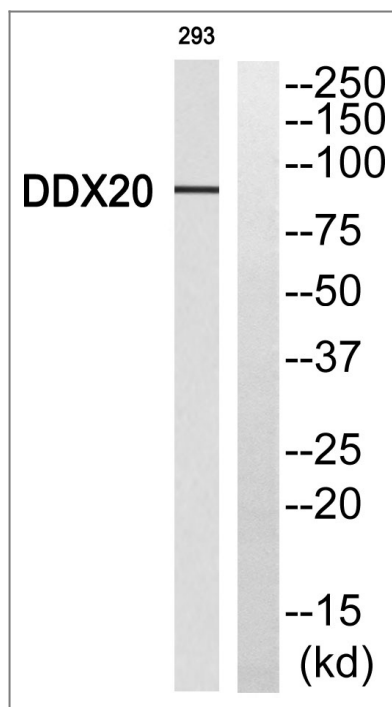
Organism	Gene ID	UniProt ID
Human	<a href="#">11218</a> ;	<a href="#">Q9UHI6</a> ;
Mouse	<a href="#">53975</a> ;	<a href="#">Q9JY4</a> ;

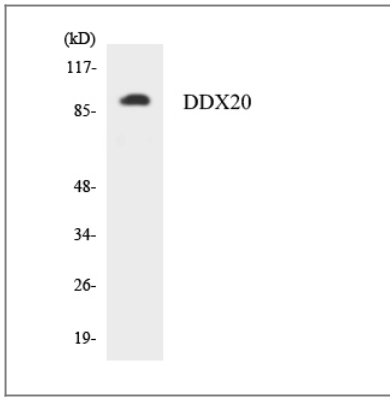
**Cellular Localization** Cytoplasm . Nucleus, gem . Localized in subnuclear structures next to coiled bodies, called Gemini of Cajal bodies (Gems). .

**Tissue specificity** Ubiquitous.

**Function** Function:The SMN complex plays an essential role in spliceosomal snRNP assembly in the cytoplasm and is required for pre-mRNA splicing in the nucleus. It may also play a role in the metabolism of snoRNPs.,similarity:Belongs to the DEAD box helicase family.,similarity:Belongs to the DEAD box helicase family. DDX20 subfamily.,similarity:Contains 1 helicase ATP-binding domain.,similarity:Contains 1 helicase C-terminal domain.,subcellular location:Localized in subnuclear structures next to coiled bodies, called Gemini of Cajal bodies (Gems).,subunit:Part of the core SMN complex that contains SMN1, SIP1/GEMIN2, DDX20/GEMIN3, GEMIN4, GEMIN5, GEMIN6, GEMIN7, GEMIN8 and STRAP/UNRIP. Interacts directly with SMN1 and with several spliceosomal snRNP core Sm proteins, including SNUPN, SNRPB, SNRPD2 and SNRPD3. Interacts with PPP4R2. Interacts with EBV EBNA2 and EBNA3C.,tissue specificity:Ubiquitous.,

## Validation Data





Western blot analysis of the lysates from K562 cells using DDX20 antibody.

## Contact information

Orders: [order@immunoway.com](mailto:order@immunoway.com)  
Support: [tech@immunoway.com](mailto:tech@immunoway.com)  
Telephone: 877-594-3616 (Toll Free), 408-747-0185  
Website: <http://www.immunoway.com>  
Address: 2200 Ringwood Ave San Jose, CA 95131 USA



Please scan the QR code to access additional product information:  
**Gemin3 Rabbit pAb**

For Research Use Only. Not for Use in Diagnostic Procedures.

[Antibody](#) | [ELISA Kits](#) | [Protein](#) | [Reagents](#)