

FADD Rabbit pAb

CatalogNo: YT1656

Orthogonal Validated 

Key Features

Host Species

- Rabbit

Reactivity

- Human, Mouse

Applications

- WB, IHC, IF, ELISA

MW

- 28kD (Observed)

Isotype

- IgG

Recommended Dilution Ratios

WB 1:500-1:2000**IHC 1:100-1:300****ELISA 1:5000****IF 1:50-200**

Storage

Storage*

-15°C to -25°C/1 year (Do not lower than -25°C)

Formulation

Liquid in PBS containing 50% glycerol, 0.5% BSA and 0.02% sodium azide.

Basic Information

Clonality

Polyclonal

Immunogen Information

Immunogen

The antiserum was produced against synthesized peptide derived from human FADD. AA range: 159-208

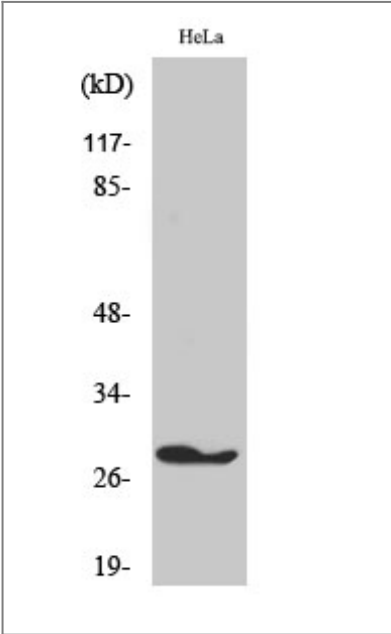
Specificity

FADD Polyclonal Antibody detects endogenous levels of FADD protein.

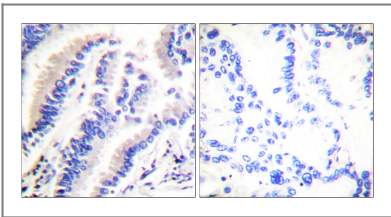
Target Information

Gene name	FADD		
Protein Name	Protein FADD		
	Organism	Gene ID	UniProt ID
	Human	8772 ;	Q13158 ;
	Mouse		Q61160 ;
Cellular Localization	cytoplasm,cytosol,plasma membrane,death-inducing signaling complex,CD95 death-inducing signaling complex,neuron projection,cell body,membrane raft,ripiptosome,		
Tissue specificity	Expressed in a wide variety of tissues, except for peripheral blood mononuclear leukocytes.		
Function	Domain:Contains a death domain involved in the binding of the corresponding domain within Fas receptor.,Function:Apoptotic adaptor molecule that recruits caspase-8 or caspase-10 to the activated Fas (CD95) or TNFR-1 receptors. The resulting aggregate called the death-inducing signaling complex (DISC) performs caspase-8 proteolytic activation. Active caspase-8 initiates the subsequent cascade of caspases mediating apoptosis.,PTM:Phosphorylated.,similarity:Contains 1 death domain.,similarity:Contains 1 DED (death effector) domain.,subunit:Interacts with CFLAR, PEA15 and MBD4. When phosphorylated, part of a complex containing HIPK3 and FAS. May interact with MAVS/IPS1. Interacts with MOCV v-CFLAR protein and LRDD.,tissue specificity:Expressed in a wide variety of tissues, except for peripheral blood mononuclear leukocytes.,		

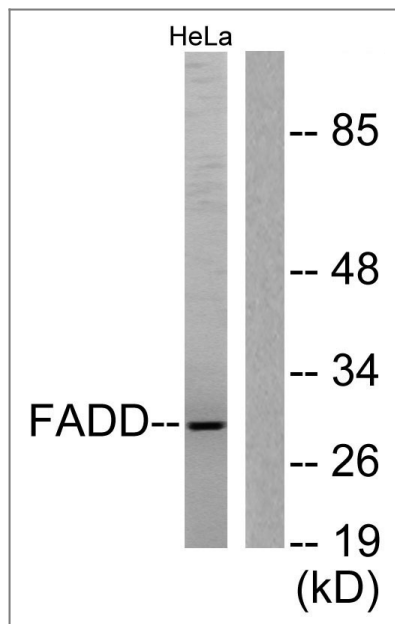
Validation Data



Western Blot analysis of various cells using FADD Polyclonal Antibody diluted at 1:500



Immunohistochemistry analysis of paraffin-embedded human lung carcinoma tissue, using FADD Antibody. The picture on the right is blocked with the synthesized peptide.



Western blot analysis of lysates from HeLa cells, treated with PMA 125ng/ml 30', using FADD Antibody. The lane on the right is blocked with the synthesized peptide.

Contact information

Orders: order@immunoway.com
 Support: tech@immunoway.com
 Telephone: 877-594-3616 (Toll Free), 408-747-0185
 Website: <http://www.immunoway.com>
 Address: 2200 Ringwood Ave San Jose, CA 95131 USA



Please scan the QR code to access additional product information:
FADD Rabbit pAb

For Research Use Only. Not for Use in Diagnostic Procedures.

[Antibody](#) | [ELISA Kits](#) | [Protein](#) | [Reagents](#)