

E2F-5 Rabbit pAb

CatalogNo: YT1445

Key Features

Host Species

- Rabbit

Reactivity

- Human, Mouse, Rat

Applications

- WB, ELISA

MW

- 36kD (Observed)

Isotype

- IgG

Storage

Storage* -15°C to -25°C/1 year (Do not lower than -25°C)

Formulation Liquid in PBS containing 50% glycerol, 0.5% BSA and 0.02% sodium azide.

Recommended Dilution Ratios

WB 1:500-1:2000

ELISA 1:20000

Not yet tested in other applications.

Basic Information

Clonality Polyclonal

Immunogen Information

Immunogen The antiserum was produced against synthesized peptide derived from human E2F-5. AA range:93-142

Specificity E2F-5 Polyclonal Antibody detects endogenous levels of E2F-5 protein.

Target Information

Gene name E2F5

Protein Name Transcription factor E2F5

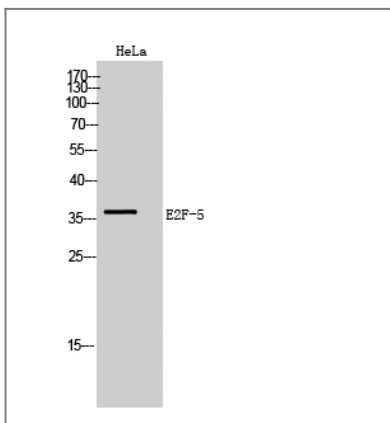
Organism	Gene ID	UniProt ID
Human	1875;	Q15329;
Mouse	13559;	Q61502;
Rat		Q62814;

Cellular Localization Nucleus.

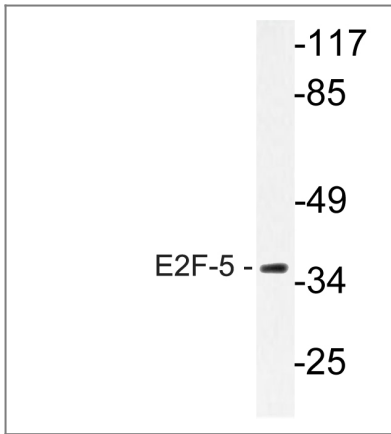
Tissue specificity Brain,Colon carcinoma,Fetal lung,Placenta,

Function Function:Transcriptional activator that binds to E2F sites, these sites are present in the promoter of many genes whose products are involved in cell proliferation. May mediate growth factor-initiated signal transduction. It is likely involved in the early responses of resting cells to growth factor stimulation.,similarity:Belongs to the E2F/DP family.,subunit:Component of the DRTF1/E2F transcription factor complex. Binds cooperatively with DP-1 to E2F sites. Interaction with retinoblastoma protein RB1 or proteins RBL1 and RBL2 inhibits the E2F transactivation domain. Component of the DREAM complex (also named LINC complex) at least composed of E2F4, E2F5, LIN9, LIN37, LIN52, LIN54, MYBL1, MYBL2, RBL1, RBL2, RBBP4, TFDP1 and TFDP2. The complex exists in quiescent cells where it represses cell cycle-dependent genes. It dissociates in S phase when LIN9, LIN37, LIN52 and LIN54 form a subcomplex that binds to MYBL2.,

Validation Data



Western Blot analysis of HeLa cells using E2F-5 Polyclonal Antibody



Western blot analysis of lysate from HeLa cells, using E2F-5 antibody.

Contact information

Orders: order@immunoway.com
Support: tech@immunoway.com
Telephone: 877-594-3616 (Toll Free), 408-747-0185
Website: <http://www.immunoway.com>
Address: 2200 Ringwood Ave San Jose, CA 95131 USA



Please scan the QR code to access additional product information:
E2F-5 Rabbit pAb

For Research Use Only. Not for Use in Diagnostic Procedures.

[Antibody](#) | [ELISA Kits](#) | [Protein](#) | [Reagents](#)