

Dvl-2 Rabbit pAb

CatalogNo: YT1424

Key Features

Host Species

- Rabbit

Reactivity

- Human, Mouse

Applications

- WB, IHC, IF, ELISA

MW

- 80kD (Observed)

Isotype

- IgG

Recommended Dilution Ratios

WB 1:500-1:2000

IHC 1:100-1:300

ELISA 1:40000

IF 1:50-200

Storage

Storage*

-15°C to -25°C/1 year (Do not lower than -25°C)

Formulation

Liquid in PBS containing 50% glycerol, 0.5% BSA and 0.02% sodium azide.

Basic Information

Clonality

Polyclonal

Immunogen Information

Immunogen

Synthesized peptide derived from Dvl-2 . at AA range: 670-750

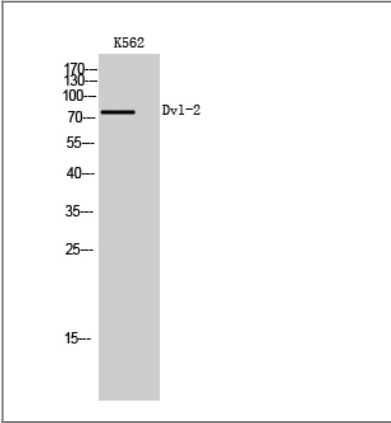
Specificity

Dvl-2 Polyclonal Antibody detects endogenous levels of Dvl-2 protein.

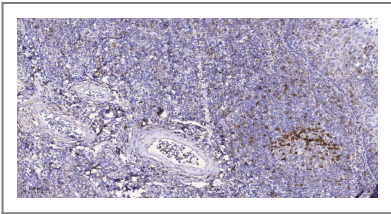
Target Information

Gene name	DVL2		
Protein Name	Segment polarity protein dishevelled homolog DVL-2		
	Organism	Gene ID	UniProt ID
	Human	1856 ;	O14641 ;
	Mouse	13543 ;	Q60838 ;
Cellular Localization	Cell membrane ; Peripheral membrane protein ; Cytoplasmic side . Cytoplasm, cytosol . Cytoplasmic vesicle . Nucleus . Localizes at the cell membrane upon interaction with frizzled family members and promotes their internalization. Localizes to cytoplasmic puncta (By similarity). Interaction with FO XK1 and FO XK2 induces nuclear translocation (PubMed:25805136). .		
Tissue specificity	Colon,		
Function	Function:May play a role in the signal transduction pathway mediated by multiple Wnt genes.,PTM:Phosphorylated.,similarity:Belongs to the DSH family.,similarity:Contains 1 DEP domain.,similarity:Contains 1 DIX domain.,similarity:Contains 1 PDZ (DHR) domain.,subunit:Interacts through its PDZ domain with the C-terminal regions of VANGL1 and VANGL2 (By similarity). Interacts with DIXDC1 and Rac.,		

Validation Data



Western Blot analysis of K562 cells using Dvl-2 Polyclonal Antibody



Immunohistochemical analysis of paraffin-embedded human tonsil. 1, Antibody was diluted at 1:200(4° overnight). 2, Tris-EDTA,pH9.0 was used for antigen retrieval. 3,Secondary antibody was diluted at 1:200(room temperature, 45min).

Contact information

Orders: order@immunoway.com
Support: tech@immunoway.com
Telephone: 877-594-3616 (Toll Free), 408-747-0185
Website: http://www.immunoway.com
Address: 2200 Ringwood Ave San Jose, CA 95131 USA



Please scan the QR code
to access additional
product information:
Dvl-2 Rabbit pAb

For Research Use Only. Not for Use in Diagnostic Procedures.

[Antibody](#) | [ELISA Kits](#) | [Protein](#) | [Reagents](#)