

DOCK 180 Rabbit pAb

CatalogNo: YT1391

Key Features

Host Species

- Rabbit

Reactivity

- Human, Mouse

Applications

- WB, ELISA

MW

- 215kD (Observed)

Isotype

- IgG

Storage

Storage* -15°C to -25°C/1 year (Do not lower than -25°C)

Formulation Liquid in PBS containing 50% glycerol, 0.5% BSA and 0.02% sodium azide.

Recommended Dilution Ratios

WB 1:500-1:2000

ELISA 1:40000

Not yet tested in other applications.

Basic Information

Clonality Polyclonal

Immunogen Information

Immunogen The antiserum was produced against synthesized peptide derived from human DOCK1. AA range:1661-1710

Specificity DOCK 180 Polyclonal Antibody detects endogenous levels of DOCK 180 protein.

Target Information

Gene name DOCK1

Protein Name Deducator of cytokinesis protein 1

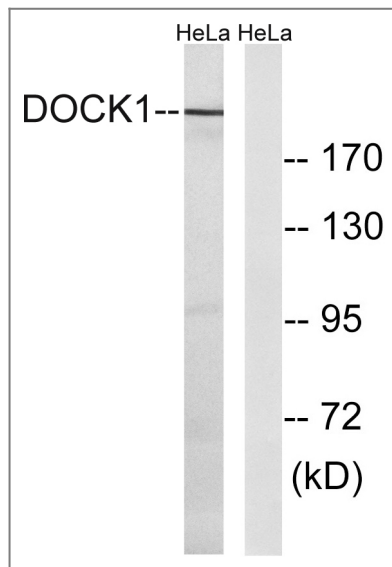
Organism	Gene ID	UniProt ID
Human	1793;	Q14185;
Mouse	330662;	Q8BUR4;

Cellular Localization Cytoplasm . Membrane . Recruited to membranes via its interaction with phosphatidylinositol 3,4,5-trisphosphate. .

Tissue specificity Highly expressed in placenta, lung, kidney, pancreas and ovary. Expressed at intermediate level in thymus, testes and colon.

Function Domain:The DHR-2 domain is necessary and sufficient for the GEF activity.,Function:Involved in cytoskeletal rearrangements required for phagocytosis of apoptotic cells and cell motility. Functions as a guanine nucleotide exchange factor (GEF), which activates Rac Rho small GTPases by exchanging bound GDP for free GTP. Its GEF activity may be enhanced by ELMO1.,similarity:Belongs to the DOCK family.,similarity:Contains 1 DHR-1 (CZH-1) domain.,similarity:Contains 1 DHR-2 (CZH-2) domain.,similarity:Contains 1 SH3 domain.,subcellular location:Recruited to membranes via its interaction with phosphatidylinositol 3,4,5-triphosphate.,subunit:Interacts with the SH3 domains of CRK and NCK2 via multiple sites. Interacts with nucleotide-free RAC1 via its DHR-2 domain. Interacts with ELMO1, ELMO2 and probably ELMO3 via its SH3 domain. Interacts with RAC1 and BAI1.,tissue specificity:Highly expressed in placenta, lung, kidney, pancreas and ovary. Expressed at intermediate level in thymus, testes and colon.,

Validation Data



Western blot analysis of lysates from HeLa cells, using DOCK1 Antibody. The lane on the right is blocked with the synthesized peptide.

Contact information

Orders: order@immunoway.com
Support: tech@immunoway.com
Telephone: 877-594-3616 (Toll Free), 408-747-0185
Website: http://www.immunoway.com
Address: 2200 Ringwood Ave San Jose, CA 95131 USA



Please scan the QR code
to access additional
product information:
**DOCK 180 Rabbit
pAb**

For Research Use Only. Not for Use in Diagnostic Procedures.

[Antibody](#) | [ELISA Kits](#) | [Protein](#) | [Reagents](#)