

DNA pol δ 3 Rabbit pAb

CatalogNo: YT1372

Key Features

Host Species

- Rabbit

Reactivity

- Human, Mouse, Rat

Applications

- WB, ELISA

MW

- 51kD (Observed)

Isotype

- IgG

Storage

Storage* -15°C to -25°C/1 year (Do not lower than -25°C)**Formulation** Liquid in PBS containing 50% glycerol, 0.5% BSA and 0.02% sodium azide.

Recommended Dilution Ratios

WB 1:500-1:2000**ELISA 1:20000****Not yet tested in other applications.**

Basic Information

Clonality Polyclonal

Immunogen Information

Immunogen The antiserum was produced against synthesized peptide derived from human POLD3. AA range: 411-460**Specificity** DNA pol δ 3 Polyclonal Antibody detects endogenous levels of DNA pol δ 3 protein.

Target Information

Gene name POLD3

Protein Name DNA polymerase delta subunit 3

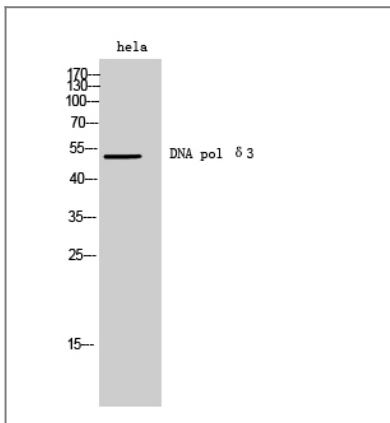
Organism	Gene ID	UniProt ID
Human	10714;	Q15054;
Mouse		Q9EQ28;

Cellular Localization Cytoplasm . Nucleus . Partially colocalizes with PCNA and POLD1 at S phase replication sites (PubMed:11595739). Recruited to DNA damage sites within 2 hours following UV irradiation (PubMed:20227374, PubMed:22801543). .

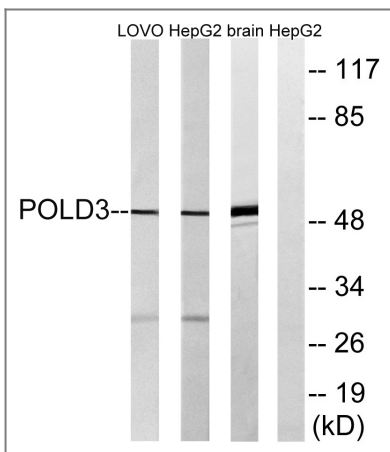
Tissue specificity Bone marrow,Brain,Duodenum,Embryonic kidney,Epithelium,Lymp

Function Function:Required for optimal DNA polymerase delta activity.,subunit:Heterotetramer composed of subunits of 125 kDa, 50 kDa, 66 kDa and 12 kDa. Interacts with POLD2. Interacts with PCNA.,

Validation Data



Western Blot analysis of heLa cells using DNA pol δ3 Polyclonal Antibody diluted at 1:500 cells nucleus extracted by Minute TM Cytoplasmic and Nuclear Fractionation kit (SC-003, Inventbiotech, MN, USA).



Western blot analysis of lysates from LOVO, HepG2, and mouse brain cells, using POLD3 Antibody. The lane on the right is blocked with the synthesized peptide.

Contact information

Orders: order@immunoway.com
Support: tech@immunoway.com
Telephone: 877-594-3616 (Toll Free), 408-747-0185
Website: http://www.immunoway.com
Address: 2200 Ringwood Ave San Jose, CA 95131 USA



Please scan the QR code
to access additional
product information:
**DNA pol δ 3 Rabbit
pAb**

For Research Use Only. Not for Use in Diagnostic Procedures.

[Antibody](#) | [ELISA Kits](#) | [Protein](#) | [Reagents](#)