

## CYP2S1 Rabbit pAb

CatalogNo: YT1223

### Key Features

#### Host Species

- Rabbit

#### Reactivity

- Human, Mouse

#### Applications

- WB, IHC, IF, ELISA

#### MW

- 56kD (Observed)

#### Isotype

- IgG

### Storage

**Storage\*** -15°C to -25°C/1 year (Do not lower than -25°C)

**Formulation** Liquid in PBS containing 50% glycerol, 0.5% BSA and 0.02% sodium azide.

### Recommended Dilution Ratios

**WB 1:500-1:2000**

**IHC 1:100-1:300**

**IF 1:200-1:1000**

**ELISA 1:5000**

**Not yet tested in other applications.**

### Basic Information

**Clonality** Polyclonal

### Immunogen Information

**Immunogen** The antiserum was produced against synthesized peptide derived from human Cytochrome P450 2S1. AA range: 181-230

**Specificity** CYP2S1 Polyclonal Antibody detects endogenous levels of CYP2S1 protein.

## Target Information

**Gene name** CYP2S1

**Protein Name** Cytochrome P450 2S1

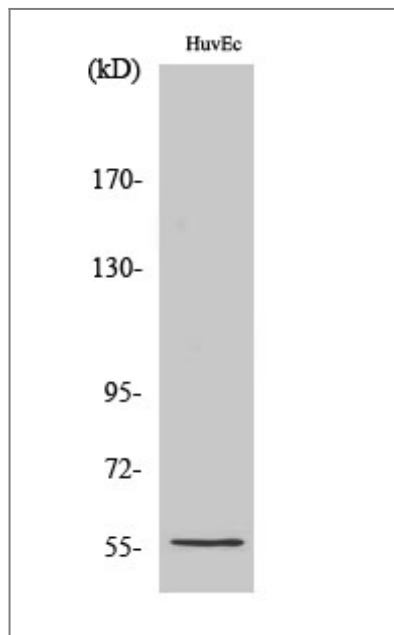
Organism	Gene ID	UniProt ID
Human	<a href="#">29785;</a>	<a href="#">Q96SQ9;</a>
Mouse	<a href="#">74134;</a>	<a href="#">Q9DBX6;</a>

**Cellular Localization** Endoplasmic reticulum membrane ; Peripheral membrane protein . Microsome membrane ; Peripheral membrane protein .

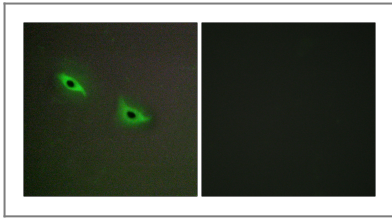
**Tissue specificity** Expressed at higher levels in extrahepatic tissues including trachea, lung, stomach, small intestine, colon, kidney, breast, placenta and spleen (PubMed:11181079, PubMed:12711469). Expressed in peripheral blood leukocytes (PubMed:11181079). Constitutively expressed in skin (at protein level) (PubMed:12711469).

**Function** Catalytic activity:RH + reduced flavoprotein + O(2) = ROH + oxidized flavoprotein + H(2)O.,cofactor:Heme group.,Function:Has a potential importance for extrahepatic xenobiotic metabolism.,similarity:Belongs to the cytochrome P450 family.,tissue specificity:High level of expression in trachea, lung, stomach, small intestine, and spleen.,

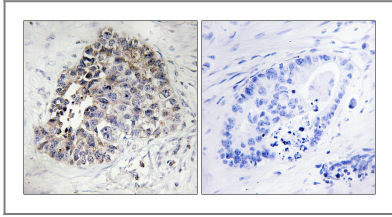
## Validation Data



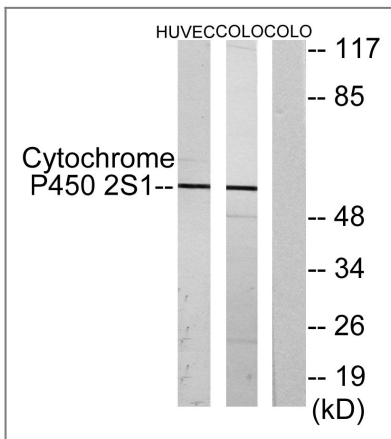
Western Blot analysis of various cells using CYP2S1 Polyclonal Antibody diluted at 1:2000



Immunofluorescence analysis of A549 cells, using Cytochrome P450 2S1 Antibody. The picture on the right is blocked with the synthesized peptide.



Immunohistochemistry analysis of paraffin-embedded human lung carcinoma tissue, using Cytochrome P450 2S1 Antibody. The picture on the right is blocked with the synthesized peptide.



Western blot analysis of lysates from HUVEC and COLO cells, using Cytochrome P450 2S1 Antibody. The lane on the right is blocked with the synthesized peptide.

## Contact information

Orders: [order@immunoway.com](mailto:order@immunoway.com)  
Support: [tech@immunoway.com](mailto:tech@immunoway.com)  
Telephone: 877-594-3616 (Toll Free), 408-747-0185  
Website: <http://www.immunoway.com>  
Address: 2200 Ringwood Ave San Jose, CA 95131 USA



Please scan the QR code to access additional product information:  
**CYP2S1 Rabbit pAb**

For Research Use Only. Not for Use in Diagnostic Procedures.

[Antibody](#) | [ELISA Kits](#) | [Protein](#) | [Reagents](#)