

## COX7a2/3 Rabbit pAb

CatalogNo: YT1079

Orthogonal Validated 

### Key Features

**Host Species**

- Rabbit

**Reactivity**

- Human, Mouse, Rat

**Applications**

- WB, IHC, IF, ELISA

**MW**

- 12kD (Observed)

**Isotype**

- IgG

### Recommended Dilution Ratios

**WB 1:500-1:2000****IHC 1:100-1:300****ELISA 1:10000****IF 1:50-200**

### Storage

**Storage\*** -15°C to -25°C/1 year (Do not lower than -25°C)**Formulation** Liquid in PBS containing 50% glycerol, 0.5% BSA and 0.02% sodium azide.

### Basic Information

**Clonality** Polyclonal

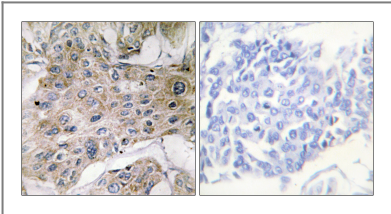
### Immunogen Information

**Immunogen** The antiserum was produced against synthesized peptide derived from human COX7S/A2. AA range: 1-50**Specificity** COX7a2/3 Polyclonal Antibody detects endogenous levels of COX7a2/3 protein.

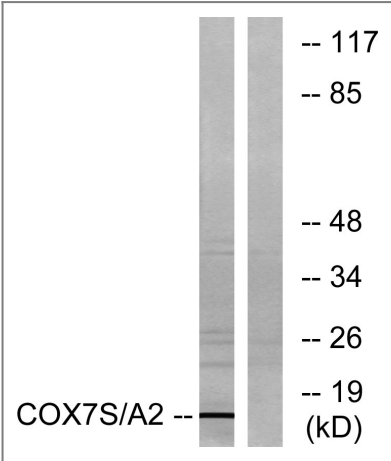
### Target Information

Gene name	COX7A2/COX7A2P2		
Protein Name	Cytochrome c oxidase subunit 7A2/3 mitochondrial		
	Organism	Gene ID	UniProt ID
	Human	<a href="#">1347</a> ;	<a href="#">O60397</a> ; <a href="#">P14406</a> ;
	Mouse	<a href="#">12866</a> ;	
	Rat	<a href="#">29507</a> ;	<a href="#">P35171</a> ;
Cellular Localization	Mitochondrion inner membrane .		

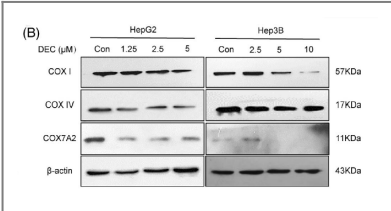
Validation Data



Immunohistochemistry analysis of paraffin-embedded human breast carcinoma tissue, using COX7S/A2 Antibody. The picture on the right is blocked with the synthesized peptide.



Western blot analysis of lysates from rat heart cells, using COX7S/A2 Antibody. The lane on the right is blocked with the synthesized peptide.



The nature compound dehydrocrenatidine exerts potent antihepatocellular carcinoma by destroying mitochondrial complexes in vitro and in vivo 2022 Feb 02. WB Human

Contact information

Orders: order@immunoway.com  
Support: tech@immunoway.com  
Telephone: 877-594-3616 (Toll Free), 408-747-0185  
Website: http://www.immunoway.com  
Address: 2200 Ringwood Ave San Jose, CA 95131 USA



Please scan the QR code  
to access additional  
product information:  
**COX7a2/3 Rabbit  
pAb**

---

For Research Use Only. Not for Use in Diagnostic Procedures.

[Antibody](#) | [ELISA Kits](#) | [Protein](#) | [Reagents](#)