

CHST13 Rabbit pAb

CatalogNo: YT0919

Key Features

Host Species

- Rabbit

Reactivity

- Human

Applications

- WB,IHC,IF,ELISA

MW

- 39kD (Observed)

Isotype

- IgG

Storage

Storage* -15°C to -25°C/1 year(Do not lower than -25°C)**Formulation** Liquid in PBS containing 50% glycerol, 0.5% BSA and 0.02% sodium azide.

Recommended Dilution Ratios

WB 1:500-1:2000**IHC 1:100-1:300****ELISA 1:40000****IF 1:50-200**

Basic Information

Clonality Polyclonal

Immunogen Information

Immunogen The antiserum was produced against synthesized peptide derived from human CHST13. AA range:211-260**Specificity** CHST13 Polyclonal Antibody detects endogenous levels of CHST13 protein.

Target Information

Gene name CHST13

Protein Name Carbohydrate sulfotransferase 13

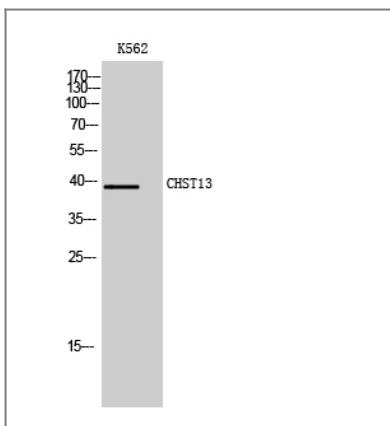
Organism	Gene ID	UniProt ID
Human	166012 ;	Q8NET6 ;

Cellular Localization Golgi apparatus membrane ; Single-pass type II membrane protein .

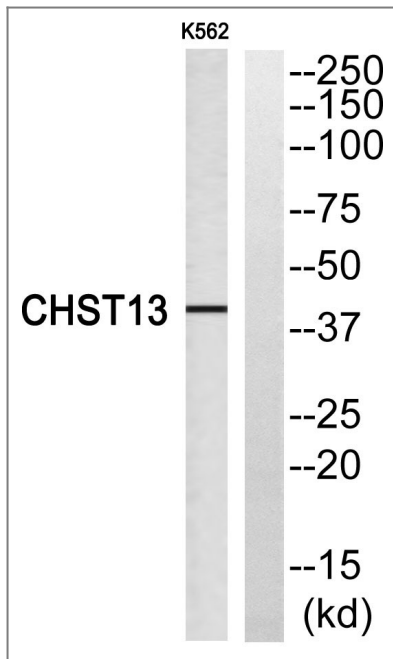
Tissue specificity Highly expressed in adult liver. Expressed at lower level in kidney, lymph nodes and fetal kidney.

Function Catalytic activity:3'-phosphoadenylyl sulfate + chondroitin = adenosine 3',5'-bisphosphate + chondroitin 4'-sulfate.,Function:Catalyzes the transfer of sulfate to position 4 of the N-acetylgalactosamine (GalNAc) residue of chondroitin. Chondroitin sulfate constitutes the predominant proteoglycan present in cartilage and is distributed on the surfaces of many cells and extracellular matrices. Transfers sulfate to the C4 hydroxyl of beta1,4-linked GalNAc that is substituted with a beta-linked glucuronic acid at the C-3 hydroxyl. No activity toward dermatan.,similarity:Belongs to the sulfotransferase 2 family.,tissue specificity:Highly expressed in adult liver. Expressed at lower level in kidney, lymph nodes and fetal kidney.,

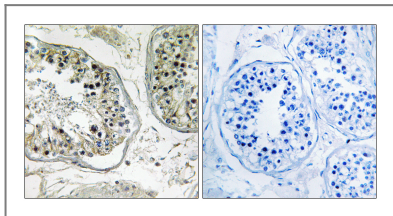
Validation Data



Western Blot analysis of K562 cells using CHST13 Polyclonal Antibody



Western blot analysis of CHST13 Antibody. The lane on the right is blocked with the CHST13 peptide.



Immunohistochemistry analysis of paraffin-embedded human testis, using CHST13 Antibody. The lane on the right is blocked with the CHST13 peptide.

Contact information

Orders: order@immunoway.com
 Support: tech@immunoway.com
 Telephone: 877-594-3616 (Toll Free), 408-747-0185
 Website: <http://www.immunoway.com>
 Address: 2200 Ringwood Ave San Jose, CA 95131 USA



Please scan the QR code to access additional product information:
CHST13 Rabbit pAb

For Research Use Only. Not for Use in Diagnostic Procedures.

[Antibody](#) | [ELISA Kits](#) | [Protein](#) | [Reagents](#)