

## Cdc37 Rabbit pAb

CatalogNo: YT0805

### Key Features

#### Host Species

- Rabbit

#### Reactivity

- Human, Mouse, Rat, Monkey

#### Applications

- WB, IHC, IF, ELISA

#### MW

- 44kD (Observed)

#### Isotype

- IgG

### Recommended Dilution Ratios

**WB 1:500-1:2000**

**IHC 1:100-1:300**

**IF 1:200-1:1000**

**ELISA 1:20000**

**Not yet tested in other applications.**

### Storage

#### Storage\*

-15°C to -25°C/1 year (Do not lower than -25°C)

#### Formulation

Liquid in PBS containing 50% glycerol, 0.5% BSA and 0.02% sodium azide.

### Basic Information

#### Clonality

Polyclonal

### Immunogen Information

#### Immunogen

The antiserum was produced against synthesized peptide derived from human CDC37. AA range: 1-50

#### Specificity

Cdc37 Polyclonal Antibody detects endogenous levels of Cdc37 protein.

## Target Information

**Gene name** CDC37

**Protein Name** Hsp90 co-chaperone Cdc37

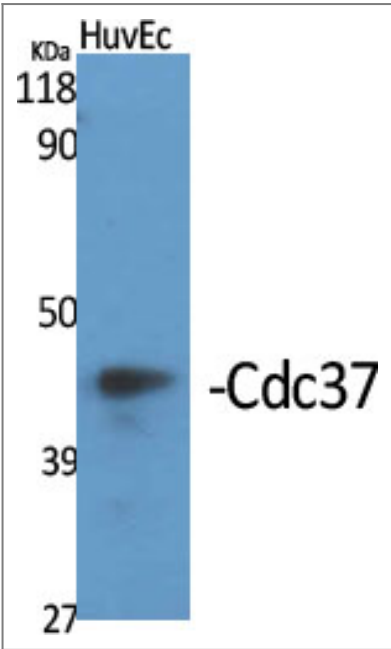
Organism	Gene ID	UniProt ID
Human	<a href="#">11140</a> ;	<a href="#">Q16543</a> ;
Mouse	<a href="#">12539</a> ;	<a href="#">Q61081</a> ;
Rat	<a href="#">114562</a> ;	<a href="#">Q63692</a> ;

**Cellular Localization** Cytoplasm .

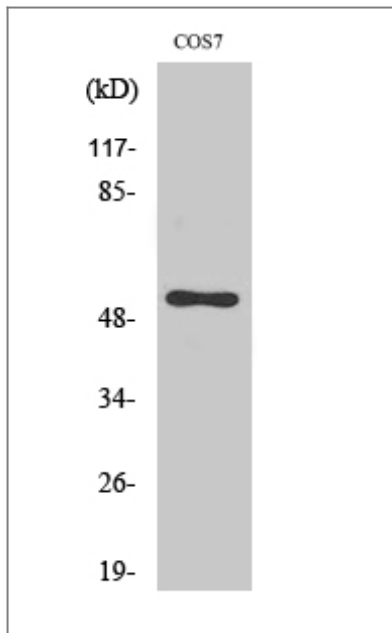
**Tissue specificity** Lymph,Placenta,

**Function** Function:Co-chaperone that binds to numerous kinases and promotes their interaction with the Hsp90 complex, resulting in stabilization and promotion of their activity.,PTM:Constitutively sumoylated by UBE2I.,similarity:Belongs to the CDC37 family.,subunit:Forms a complex with Hsp90. Interacts with AR, CDK4, CDK6, EIF2AK1 and RB1.,

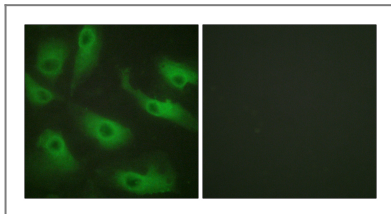
## Validation Data



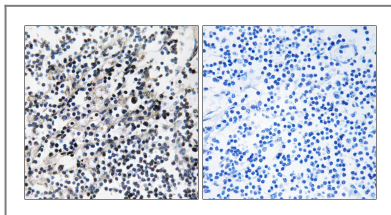
Western Blot analysis of various cells using Cdc37 Polyclonal Antibody



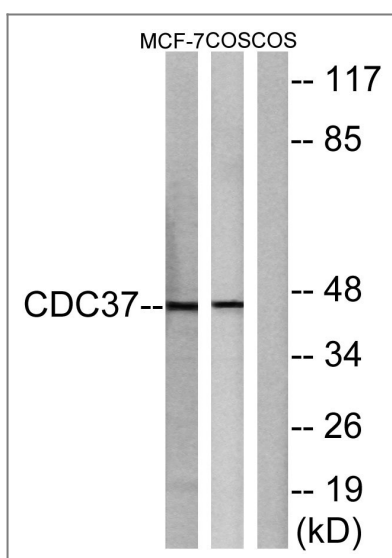
Western Blot analysis of MCF7 cells using Cdc37 Polyclonal Antibody



Immunofluorescence analysis of HeLa cells, using CDC37 Antibody. The picture on the right is blocked with the synthesized peptide.



Immunohistochemistry analysis of paraffin-embedded human placenta tissue, using CDC37 Antibody. The picture on the right is blocked with the synthesized peptide.



Western blot analysis of lysates from MCF-7 and COS7 cells, using CDC37 Antibody. The lane on the right is blocked with the synthesized peptide.

## Contact information

Orders: order@immunoway.com  
Support: tech@immunoway.com  
Telephone: 877-594-3616 (Toll Free), 408-747-0185  
Website: http://www.immunoway.com  
Address: 2200 Ringwood Ave San Jose, CA 95131 USA



Please scan the QR code  
to access additional  
product information:

**Cdc37 Rabbit pAb**

---

For Research Use Only. Not for Use in Diagnostic Procedures.

[Antibody](#) | [ELISA Kits](#) | [Protein](#) | [Reagents](#)