

CD50/ICAM-3 Rabbit pAb

CatalogNo: YT0767 **Orthogonal Validated** 

Key Features

Host Species

- Rabbit

Reactivity

- Human

Applications

- WB,IF,ELISA

MW

- 42-60kD (Observed)

Isotype

- IgG

Storage

Storage* -15°C to -25°C/1 year(Do not lower than -25°C)**Formulation** Liquid in PBS containing 50% glycerol, 0.5% BSA and 0.02% sodium azide.

Recommended Dilution Ratios

WB 1:500-1:2000**IF 1:200-1:1000****ELISA 1:5000****Not yet tested in other applications.**

Basic Information

Clonality Polyclonal

Immunogen Information

Immunogen The antiserum was produced against synthesized peptide derived from human CD50/ICAM-3. AA range:484-533**Specificity** CD50 Polyclonal Antibody detects endogenous levels of CD50 protein.

Target Information

Gene name ICAM3

Protein Name Intercellular adhesion molecule 3

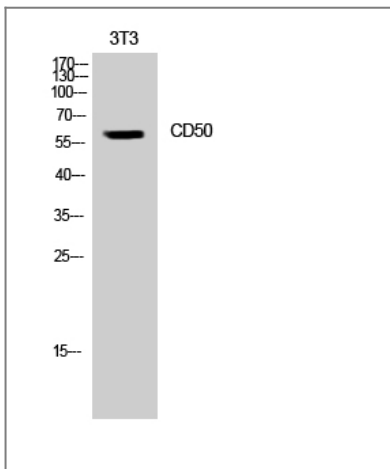
Organism	Gene ID	UniProt ID
Human	3385 ;	P32942 ;

Cellular Localization Membrane; Single-pass type I membrane protein.

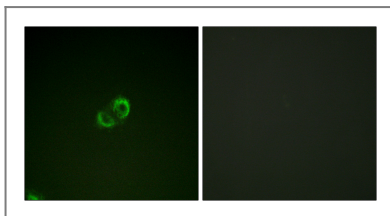
Tissue specificity Leukocytes.

Function Function:ICAM proteins are ligands for the leukocyte adhesion protein LFA-1 (integrin alpha-L/beta-2). ICAM3 is also a ligand for integrin alpha-D/beta-2.,online information:ICAM-3,PTM:N-glycosylated; glycans consist of a mixture of tri- and tetra-antennary complex-type chains and high-mannose chains.,PTM:Upon stimulation by a physiologic stimuli becomes rapidly and transiently phosphorylated on serine residues.,similarity:Belongs to the immunoglobulin superfamily. ICAM family.,similarity:Contains 5 Ig-like C2-type (immunoglobulin-like) domains.,

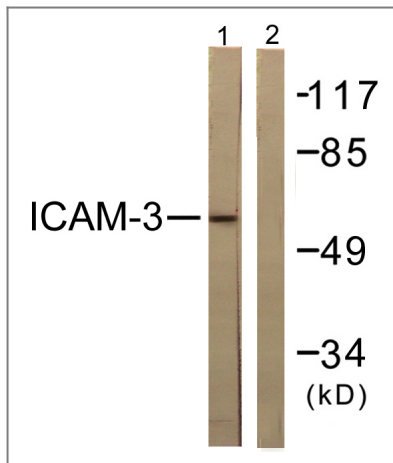
Validation Data



Western Blot analysis of NIH-3T3 cells using CD50 Polyclonal Antibody



Immunofluorescence analysis of A549 cells, using CD50/ICAM-3 Antibody. The picture on the right is blocked with the synthesized peptide.



Western blot analysis of lysates from NIH/3T3 cells, treated with TNF- α 20ng/ml 5', using CD50/ICAM-3 Antibody. The lane on the right is blocked with the synthesized peptide.

Contact information

Orders: order@immunoway.com
Support: tech@immunoway.com
Telephone: 877-594-3616 (Toll Free), 408-747-0185
Website: <http://www.immunoway.com>
Address: 2200 Ringwood Ave San Jose, CA 95131 USA



Please scan the QR code to access additional product information:
CD50/ICAM-3 Rabbit pAb

For Research Use Only. Not for Use in Diagnostic Procedures.

[Antibody](#) | [ELISA Kits](#) | [Protein](#) | [Reagents](#)