

CD272 Rabbit pAb

CatalogNo: YT0743

Orthogonal Validated 

Key Features

Host Species

- Rabbit

Reactivity

- Human,Rat,Mouse,

Applications

- WB,IHC,IF,FC,ELISA

MW

- 36kD (Observed)

Isotype

- IgG

Recommended Dilution Ratios

WB 1:500-1:2000**IHC 1:200-1:1000****Flow Cyt 1:200-1:400****ELISA 1:10000****IF 1:50-200**

Storage

Storage*

-15°C to -25°C/1 year(Do not lower than -25°C)

Formulation

Liquid in PBS containing 50% glycerol, 0.5% BSA and 0.02% sodium azide.

Basic Information

Clonality

Polyclonal

Immunogen Information

Immunogen

Synthetic peptide from human protein at AA range: 101-150

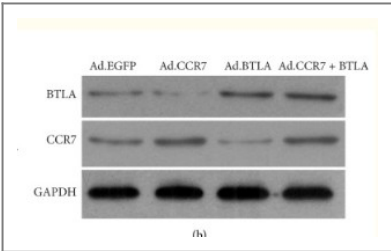
Specificity

CD272 Polyclonal Antibody detects endogenous levels of CD272 protein.

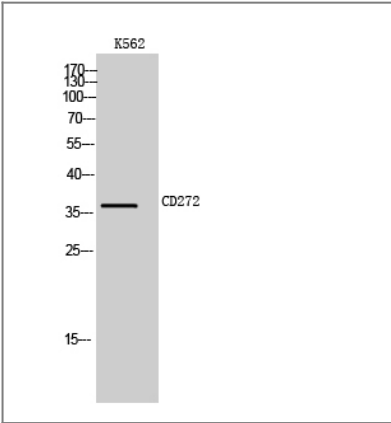
Target Information

Gene name	BTLA		
Protein Name	B- and T-lymphocyte attenuator		
	Organism	Gene ID	UniProt ID
	Human	151888 ;	Q7Z6A9 ;
	Mouse		Q7TSA3 ;
Cellular Localization	Cell membrane ; Single-pass type I membrane protein .		
Tissue specificity	PCR rescued clones,Peripheral blood,Thymus,Trachea,		
Function	Function:Lymphocyte inhibitory receptor which inhibits lymphocytes during immune response.,PTM:N-glycosylated.,PTM:Phosphorylated on Tyr residues by TNFRSF14 and by antigen receptors cross-linking, both inducing association with PTPN6 and PTPN11.,similarity:Contains 1 Ig-like V-type (immunoglobulin-like) domain.,subunit:Interacts with tyrosine phosphatases PTPN6/SHP-1 and PTPN11/SHP-2. Interacts with TNFRSF14/HVEM.,		

| Validation Data



Xin, Haiming, et al. "Adenovirus-mediated CCR7 and BTLA overexpression enhances immune tolerance and migration in immature dendritic cells." BioMed research international 2017 (2017).



Western Blot analysis of K562 cells using CD272 Polyclonal Antibody

| Contact information

Orders: order@immunoway.com
Support: tech@immunoway.com
Telephone: 877-594-3616 (Toll Free), 408-747-0185
Website: http://www.immunoway.com
Address: 2200 Ringwood Ave San Jose, CA 95131 USA



Please scan the QR code
to access additional
product information:
CD272 Rabbit pAb

For Research Use Only. Not for Use in Diagnostic Procedures.

[Antibody](#) | [ELISA Kits](#) | [Protein](#) | [Reagents](#)