

## CD264 Rabbit pAb

CatalogNo: YT0742

### Key Features

#### Host Species

- Rabbit

#### Reactivity

- Human

#### Applications

- WB,ELISA

#### MW

- 42kD (Observed)

#### Isotype

- IgG

### Storage

**Storage\*** -15°C to -25°C/1 year(Do not lower than -25°C)

**Formulation** Liquid in PBS containing 50% glycerol, 0.5% BSA and 0.02% sodium azide.

### Recommended Dilution Ratios

**WB 1:500-1:2000**

**ELISA 1:10000**

**Not yet tested in other applications.**

### Basic Information

**Clonality** Polyclonal

### Immunogen Information

**Immunogen** The antiserum was produced against synthesized peptide derived from human TNFRSF10D. AA range:121-170

**Specificity** CD264 Polyclonal Antibody detects endogenous levels of CD264 protein.

### Target Information

**Gene name** TNFRSF10D

**Protein Name** Tumor necrosis factor receptor superfamily member 10D

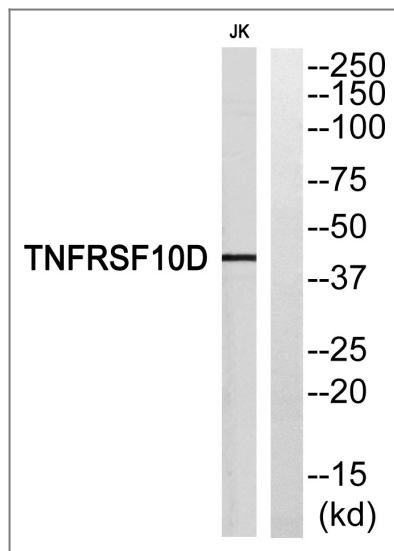
Organism	Gene ID	UniProt ID
Human	<a href="#">8793</a> ;	<a href="#">Q9UBN6</a> ;

**Cellular Localization** Membrane ; Single-pass type I membrane protein .

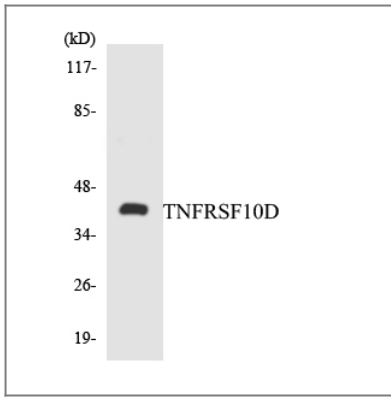
**Tissue specificity** Widely expressed, in particular in fetal kidney, lung and liver, and in adult testis and liver. Also expressed in peripheral blood leukocytes, colon and small intestine, ovary, prostate, thymus, spleen, pancreas, kidney, lung, placenta and heart.

**Function** Function:Receptor for the cytotoxic ligand TRAIL. Contains a truncated death domain and hence is not capable of inducing apoptosis but protects against TRAIL-mediated apoptosis. Reports are contradictory with regards to its ability to induce the NF-kappa-B pathway (According to PubMed:9382840 it cannot but according to PubMed:9430226 it can induce the NF-kappa-B pathway).,similarity:Contains 1 death domain.,similarity:Contains 3 TNFR-Cys repeats.,tissue specificity:Widely expressed, in particular in fetal kidney, lung and liver, and in adult testis and liver. Also expressed in peripheral blood leukocytes, colon and small intestine, ovary, prostate, thymus, spleen, pancreas, kidney, lung, placenta and heart.,

## Validation Data



Western blot analysis of TNFRSF10D Antibody. The lane on the right is blocked with the TNFRSF10D peptide.



Western blot analysis of the lysates from K562 cells using TNFRSF10D antibody.

## Contact information

Orders: [order@immunoway.com](mailto:order@immunoway.com)  
Support: [tech@immunoway.com](mailto:tech@immunoway.com)  
Telephone: 877-594-3616 (Toll Free), 408-747-0185  
Website: <http://www.immunoway.com>  
Address: 2200 Ringwood Ave San Jose, CA 95131 USA



Please scan the QR code to access additional product information:  
**CD264 Rabbit pAb**

For Research Use Only. Not for Use in Diagnostic Procedures.

[Antibody](#) | [ELISA Kits](#) | [Protein](#) | [Reagents](#)