

CD130/gp130 Rabbit pAb

CatalogNo: YT0721

Key Features

Host Species

- Rabbit

Reactivity

- Human, Mouse

Applications

- WB, IHC, IF, ELISA

MW

- 160kD (Observed)

Isotype

- IgG

Recommended Dilution Ratios

WB 1:500-1:2000

IHC 1:100-1:300

IF 1:200-1:1000

ELISA 1:20000

Not yet tested in other applications.

Storage

Storage*

-15°C to -25°C/1 year (Do not lower than -25°C)

Formulation

Liquid in PBS containing 50% glycerol, 0.5% BSA and 0.02% sodium azide.

Basic Information

Clonality

Polyclonal

Immunogen Information

Immunogen

The antiserum was produced against synthesized peptide derived from human CD130/gp130. AA range: 748-797

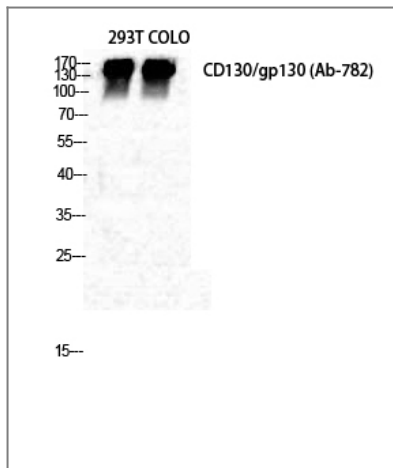
Specificity

CD130 Polyclonal Antibody detects endogenous levels of CD130 protein.

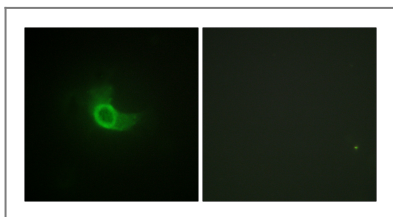
| Target Information

Gene name	IL6ST		
Protein Name	Interleukin-6 receptor subunit beta		
	Organism	Gene ID	UniProt ID
	Human	3572 ;	P40189 ;
	Mouse	16195 ;	Q00560 ;
Cellular Localization	[Isoform 1]: Cell membrane ; Single-pass type I membrane protein .; [Isoform 2]: Secreted .		
Tissue specificity	Found in all the tissues and cell lines examined (PubMed:2261637). Expression not restricted to IL6 responsive cells (PubMed:2261637). ; [Isoform 2]: Expressed in blood serum (at protein level) (PubMed:24629561).		
Function	Disease:Isoform 2 is an autoantigen found in rheumatoid arthritis (RA) but it is not specific to patients with RA.,Domain:The box 1 motif is required for JAK interaction and/or activation.,Domain:The WSXWS motif appears to be necessary for proper protein folding and thereby efficient intracellular transport and cell-surface receptor binding.,Function:Signal-transducing molecule. The receptor systems for IL6, LIF, OSM, CNTF, IL11, CTF1 and BSF3 can utilize gp130 for initiating signal transmission. Binds to IL6/IL6R (alpha chain) complex, resulting in the formation of high-affinity IL6 binding sites, and transduces the signal. Does not bind IL6. May have a role in embryonic development (By similarity). The type I OSM receptor is capable of transducing OSM-specific signaling events.,induction:Leukemia inhibitory factor (LIF) and Oncostatin-M (OSM) activate the type I OSM receptor while only OSM can activate the type II OSM receptor.,PTM:Heavily N-glycosylated.,PTM:Phosphorylation of Ser-782 down-regulates cell surface expression.,similarity:Belongs to the type I cytokine receptor family. Type 2 subfamily.,similarity:Contains 1 Ig-like C2-type (immunoglobulin-like) domain.,similarity:Contains 5 fibronectin type-III domains.,subunit:Interacts with INPP5D/SHIP1 (By similarity). Forms heterodimers composed of LIPR and IL6ST (type I OSM receptor). Also forms heterodimers composed of OSMR and IL6ST (type II OSM receptor). Homodimer. The homodimer binds two molecules of herpes virus IL6. Component of a hexamer of two molecules each of IL6, IL6R and IL6ST.,tissue specificity:Found in all the tissues and cell lines examined. Expression not restricted to IL6 responsive cells.,		

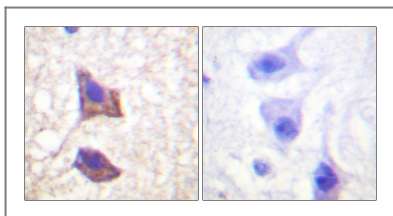
| Validation Data



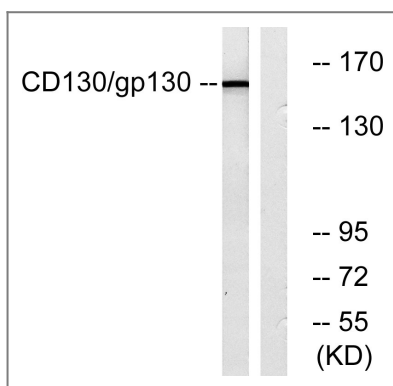
Western Blot analysis of 293T COLO cells using CD130 Polyclonal Antibody diluted at 1:500



Immunofluorescence analysis of NIH/3T3 cells, using CD130/gp130 Antibody. The picture on the right is blocked with the synthesized peptide.



Immunohistochemistry analysis of paraffin-embedded human brain tissue, using CD130/gp130 Antibody. The picture on the right is blocked with the synthesized peptide.



Western blot analysis of lysates from Jurkat cells, using CD130/gp130 Antibody. The lane on the right is blocked with the synthesized peptide.

Contact information

Orders: order@immunoway.com
 Support: tech@immunoway.com
 Telephone: 877-594-3616 (Toll Free), 408-747-0185
 Website: <http://www.immunoway.com>
 Address: 2200 Ringwood Ave San Jose, CA 95131 USA



Please scan the QR code to access additional product information:
CD130/gp130 Rabbit pAb