

## CARD 14 Rabbit pAb

CatalogNo: YT0636

### Key Features

#### Host Species

- Rabbit

#### Reactivity

- Human, Mouse

#### Applications

- IHC, IF, ELISA

#### MW

- 110kD (Observed)

#### Isotype

- IgG

### Recommended Dilution Ratios

IHC 1:100-1:300

IF 1:200-1:1000

ELISA 1:40000

Not yet tested in other applications.

### Storage

**Storage\*** -15°C to -25°C/1 year (Do not lower than -25°C)

**Formulation** Liquid in PBS containing 50% glycerol, 0.5% BSA and 0.02% sodium azide.

### Basic Information

**Clonality** Polyclonal

### Immunogen Information

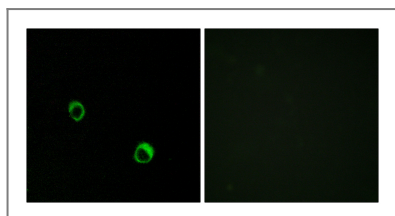
**Immunogen** The antiserum was produced against synthesized peptide derived from human CAR14. AA range: 291-340

**Specificity** CARD 14 Polyclonal Antibody detects endogenous levels of CARD 14 protein.

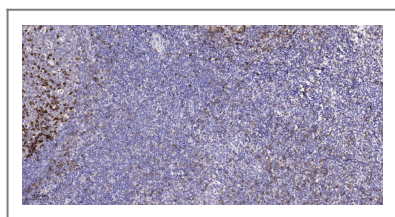
### Target Information

<b>Gene name</b>	CARD14		
<b>Protein Name</b>	Caspase recruitment domain-containing protein 14		
	<b>Organism</b>	<b>Gene ID</b>	<b>UniProt ID</b>
	Human	<a href="#">79092</a> ;	<a href="#">Q9BXL6</a> ;
	Mouse	<a href="#">170720</a> ;	<a href="#">Q99KF0</a> ;
<b>Cellular Localization</b>	[Isoform 1]: Cytoplasm .; [Isoform 2]: Cytoplasm .; [Isoform 3]: Cytoplasm .		
<b>Tissue specificity</b>	Isoform 1 is detected in placenta and epidermal keratinocytes (PubMed:22521418). Isoform 2 is detected in leukocytes and fetal brain (PubMed:22521418).		
<b>Function</b>	Caution:Supposed to contain a SH3 domain which is not detected by PROSITE, Pfam or SMART.,Function:Activates NF-kappa-B via BCL10 and IKK. Stimulates the phosphorylation of BCL10.,similarity:Contains 1 CARD domain.,similarity:Contains 1 guanylate kinase-like domain.,similarity:Contains 1 PDZ (DHR) domain.,subunit:CARD14 and BCL10 bind to each other by CARD-CARD interaction.,tissue specificity:Expressed in placenta. Also detected in HeLa S3 cells, but not in the other cancer cell lines tested.,		

## Validation Data



Immunofluorescence analysis of MCF7 cells, using CAR14 Antibody. The picture on the right is blocked with the synthesized peptide.



Immunohistochemical analysis of paraffin-embedded human tonsil. 1, Antibody was diluted at 1:200(4° overnight). 2, Tris-EDTA,pH9.0 was used for antigen retrieval. 3,Secondary antibody was diluted at 1:200(room temperature, 45min).

## Contact information

Orders: [order@immunoway.com](mailto:order@immunoway.com)  
 Support: [tech@immunoway.com](mailto:tech@immunoway.com)  
 Telephone: 877-594-3616 (Toll Free), 408-747-0185  
 Website: <http://www.immunoway.com>  
 Address: 2200 Ringwood Ave San Jose, CA 95131 USA



Please scan the QR code to access additional product information:  
**CARD 14 Rabbit pAb**

