

AurB/C Rabbit pAb

CatalogNo: YT0421 **Orthogonal Validated** 

Key Features

Host Species

- Rabbit

Reactivity

- Human, Mouse, Rat

Applications

- WB, IHC, IF, ELISA

MW

- 35kD, 39kD (Observed)

Isotype

- IgG

Storage

Storage* -15°C to -25°C/1 year (Do not lower than -25°C)**Formulation** Liquid in PBS containing 50% glycerol, 0.5% BSA and 0.02% sodium azide.

Recommended Dilution Ratios

WB 1:500-1:2000**IHC 1:100-1:300****ELISA 1:5000****IF 1:50-200**

Basic Information

Clonality Polyclonal

Immunogen Information

Immunogen The antiserum was produced against synthesized peptide derived from human AurB/C. AA range: 201-250**Specificity** AurB/C Polyclonal Antibody detects endogenous levels of AurB/C protein.

Target Information

Gene name AURKB/AURKC

Protein Name Serine/threonine-protein kinase 12/Aurora kinase C

Organism	Gene ID	UniProt ID
Human	9212 ; 6795 ;	Q96GD4 ; Q9UQB9 ;
Mouse	20877 ;	
Rat	114592 ;	O55099 ;

Cellular Localization

Nucleus . Chromosome . Chromosome, centromere . Chromosome, centromere, kinetochore . Cytoplasm, cytoskeleton, spindle . Midbody . Localizes on chromosome arms and inner centromeres from prophase through metaphase and then transferring to the spindle midzone and midbody from anaphase through cytokinesis (PubMed:20929775). Colocalized with gamma tubulin in the midbody (PubMed:17726514). Proper localization of the active, Thr-232-phosphorylated form during metaphase may be dependent upon interaction with SPDYC (PubMed:20605920). Colocalized with SIRT2 during cytokinesis with the midbody (PubMed:17726514). Localization (and probably targeting of the CPC) to the inner centromere occurs predominantly in regions with overlapping mitosis-specific histone phosphorylations H3pT3 and H2ApT12 (PubMed:20929775). .

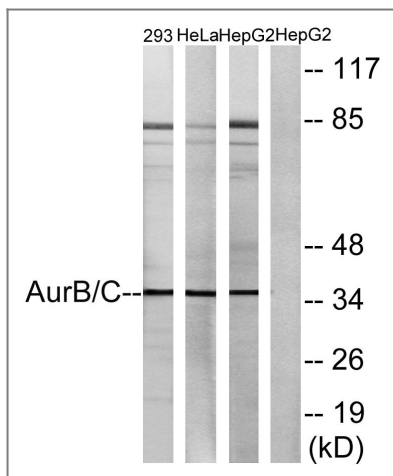
Tissue specificity

High level expression seen in the thymus. It is also expressed in the spleen, lung, testis, colon, placenta and fetal liver. Expressed during S and G2/M phase and expression is up-regulated in cancer cells during M phase. ; [Isoform 3]: Not expressed in normal liver, high expression in metastatic liver.

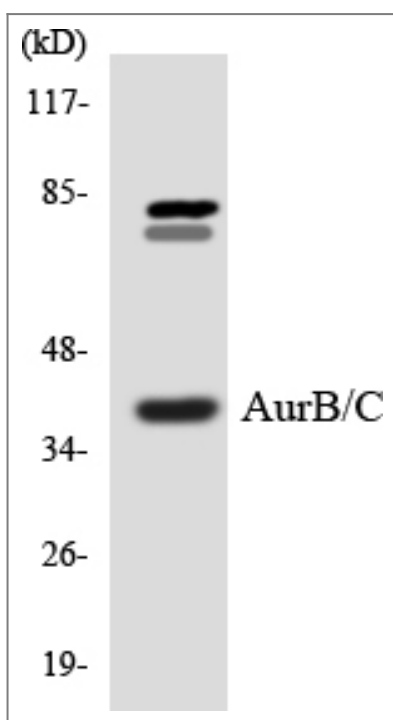
Function

Catalytic activity:ATP + a protein = ADP + a phosphoprotein.,cofactor:Magnesium.,Disease:Disruptive regulation of expression is a possible mechanism of the perturbation of chromosomal integrity in cancer cells through its dominant-negative effect on cytokinesis.,Function:May be directly involved in regulating the cleavage of polar spindle microtubules and is a key regulator for the onset of cytokinesis during mitosis. Component of the chromosomal passenger complex (CPC), a complex that acts as a key regulator of mitosis. The CPC complex has essential functions at the centromere in ensuring correct chromosome alignment and segregation and is required for chromatin-induced microtubule stabilization and spindle assembly. Phosphorylates 'Ser-10' and 'Ser-28' of histone H3 during mitosis.,similarity:Belongs to the protein kinase superfamily. Ser/Thr protein kinase family. Aurora subfamily.,similarity:Contains 1 protein kinase domain.,subcellular location:Localizes on chromosome arms and inner centromeres from prophase through metaphase and then transferring to the spindle midzone and midbody from anaphase through cytokinesis. Colocalized with gamma tubulin in the midbody.,subunit:Interacts with TACC1. Associates with RACGAP1 during M phase. Component of the CPC at least composed of BIRC5/survivin CDCA8/borealin, INCENP and AURKB/Aurora-B. Interacts with CDCA1 and NDC80. Interacts with EVI5.,tissue specificity:High level expression seen in the thymus. It is also expressed in the spleen, lung, testis, colon, placenta and fetal liver. Expressed during S and G2/M phase and expression is up-regulated in cancer cells during M phase.,

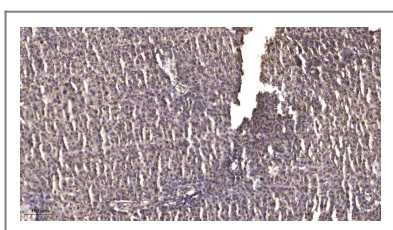
Validation Data



Western blot analysis of lysates from 293, HeLa, and fHepG2 cells, treated with Paclitaxel 1uM 24h, using AurB/C Antibody. The lane on the right is blocked with the synthesized peptide.



Western blot analysis of the lysates from COLO205 cells using AurB/C antibody.



Immunohistochemical analysis of paraffin-embedded human liver cancer. 1, Antibody was diluted at 1:200(4° overnight). 2, Tris-EDTA,pH9.0 was used for antigen retrieval. 3,Secondary antibody was diluted at 1:200(room temperature, 45min).

Contact information

Orders: order@immunoway.com
 Support: tech@immunoway.com
 Telephone: 877-594-3616 (Toll Free), 408-747-0185
 Website: <http://www.immunoway.com>
 Address: 2200 Ringwood Ave San Jose, CA 95131 USA



Please scan the QR code to access additional product information:
AurB/C Rabbit pAb

