

Atg4D Rabbit pAb

CatalogNo: YT0396

Key Features

Host Species

- Rabbit

Reactivity

- Human, Mouse

Applications

- WB, IHC, IF, ELISA

MW

- 45kD (Observed)

Isotype

- IgG

Storage

Storage* -15°C to -25°C/1 year (Do not lower than -25°C)

Formulation Liquid in PBS containing 50% glycerol, 0.5% BSA and 0.02% sodium azide.

Recommended Dilution Ratios

WB 1:500-1:2000

IHC 1:100-1:300

ELISA 1:5000

IF 1:50-200

Basic Information

Clonality Polyclonal

Immunogen Information

Immunogen Synthesized peptide derived from the Internal region of human Atg4D.

Specificity Atg4D Polyclonal Antibody detects endogenous levels of Atg4D protein.

Target Information

Gene name ATG4D

Protein Name Cysteine protease ATG4D

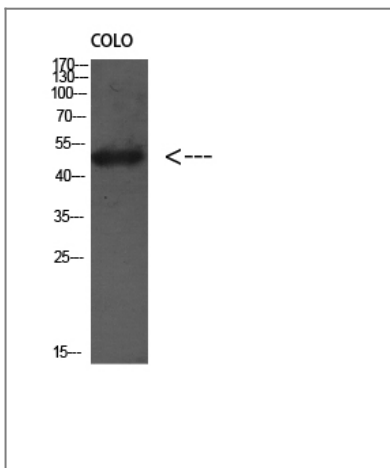
Organism	Gene ID	UniProt ID
Human	84971 ;	Q86TL0 ;
Mouse		Q8BGV9 ;

Cellular Localization [Cysteine protease ATG4D]: Cytoplasm .; [Cysteine protease ATG4D, mitochondrial]: Cytoplasm . Mitochondrion matrix . Imported into mitochondrial matrix after cleavage by CASP3 during oxidative stress and cell death. .

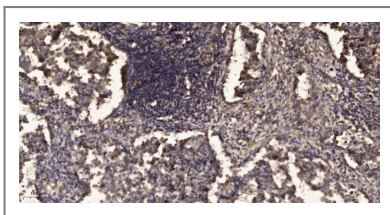
Tissue specificity Widely expressed in testis.

Function enzyme regulation:Inhibited by N-ethylmaleimide.,Function:Cysteine protease required for autophagy, which cleaves the C-terminal part of either MAP1LC3, GABARAPL2 or GABARAP, allowing the liberation of form I. A subpopulation of form I is subsequently converted to a smaller form (form II). Form II, with a revealed C-terminal glycine, is considered to be the phosphatidylethanolamine (PE)-conjugated form, and has the capacity for the binding to autophagosomes.,similarity:Belongs to the peptidase C54 family.,tissue specificity:Mainly expressed in skeletal muscle and, to a lower extent, in testis.,

Validation Data



Western Blot analysis of Colo using Antibody diluted at 1:1000. Secondary antibody(catalog#:RS0002) was diluted at 1:20000



Immunohistochemical analysis of paraffin-embedded human Squamous cell carcinoma of lung. 1, Antibody was diluted at 1:200(4° overnight). 2, Tris-EDTA,pH9.0 was used for antigen retrieval. 3,Secondary antibody was diluted at 1:200(room temperature, 45min).

Contact information

Orders: order@immunoway.com
Support: tech@immunoway.com
Telephone: 877-594-3616 (Toll Free), 408-747-0185
Website: http://www.immunoway.com
Address: 2200 Ringwood Ave San Jose, CA 95131 USA



Please scan the QR code
to access additional
product information:
Atg4D Rabbit pAb

For Research Use Only. Not for Use in Diagnostic Procedures.

[Antibody](#) | [ELISA Kits](#) | [Protein](#) | [Reagents](#)