

## ARF GAP1 Rabbit pAb

CatalogNo: YT0306

Orthogonal Validated 

### Key Features

**Host Species**

- Rabbit

**Reactivity**

- Human, Mouse, Rat, Monkey, Bovine

**Applications**

- WB, IHC, IF, ELISA

**MW**

- 48kD (Observed)

**Isotype**

- IgG

### Recommended Dilution Ratios

**WB 1:500-1:2000****IHC 1:100-1:300****IF 1:200-1:1000****ELISA 1:20000****Not yet tested in other applications.**

### Storage

**Storage\***

-15°C to -25°C/1 year (Do not lower than -25°C)

**Formulation**

Liquid in PBS containing 50% glycerol, 0.5% BSA and 0.02% sodium azide.

### Basic Information

**Clonality**

Polyclonal

### Immunogen Information

**Immunogen**

The antiserum was produced against synthesized peptide derived from human ARFGAP1. AA range: 171-220

**Specificity**

ARF GAP1 Polyclonal Antibody detects endogenous levels of ARF GAP1 protein.

## | Target Information

**Gene name** ARFGAP1

**Protein Name** ADP-ribosylation factor GTPase-activating protein 1

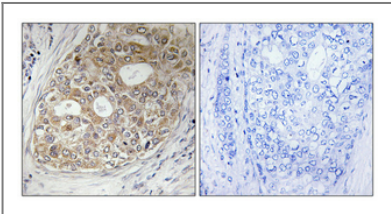
Organism	Gene ID	UniProt ID
Human	<a href="#">55738</a> ;	<a href="#">Q8N6T3</a> ;
Mouse	<a href="#">228998</a> ;	<a href="#">Q9EPJ9</a> ;
Rat	<a href="#">246310</a> ;	<a href="#">Q62848</a> ;

**Cellular Localization** Cytoplasm . Golgi apparatus . Associates with the Golgi complex. .

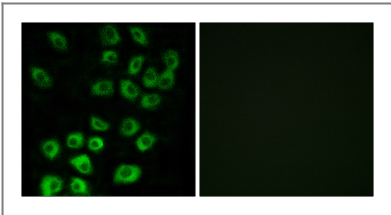
**Tissue specificity** Brain,Epithelium,Fetal brain,Testis,

**Function** Domain:The region downstream of Arf-GAP domain is essential to GAP activity in vivo. This region may be required for its targeting to Golgi membranes.,Function:GTPase-activating protein (GAP) for the ADP ribosylation factor 1 (ARF1). Involved in membrane trafficking and /or vesicle transport. Promotes hydrolysis of the ARF1-bound GTP and thus, is required for the dissociation of coat proteins from Golgi-derived membranes and vesicles, a prerequisite for vesicle's fusion with target compartment. Probably regulates ARF1-mediated transport via its interaction with the KDELR proteins and RNP24. Overexpression induces the redistribution of the entire Golgi complex to the endoplasmic reticulum, as when ARF1 is deactivated. Its activity is stimulated by phosphoinosides and inhibited by phosphatidylcholine.,sequence Caution:Intron retention.,similarity:Contains 1 Arf-GAP domain.,subcellular location:Associates with the Golgi complex.,subunit:Interacts with ARF1. Interacts with the COPI coat proteins, KDELR1 and RNP24. The interaction with RNP24 inhibits the GAP activity.,

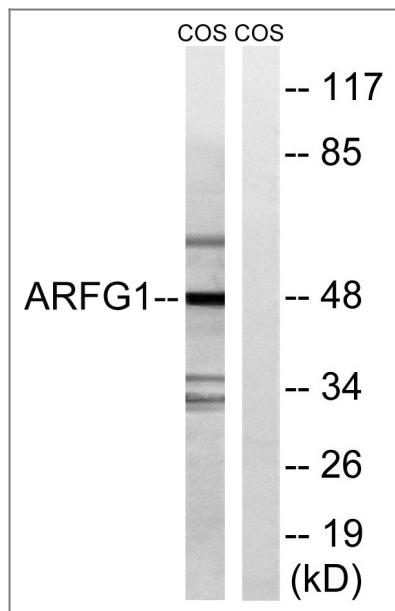
## | Validation Data



Immunohistochemical analysis of paraffin-embedded Human breast cancer. Antibody was diluted at 1:100(4° overnight). High-pressure and temperature Tris-EDTA,pH8.0 was used for antigen retrieval. Negative contrl (right) obtained from antibody was pre-absorbed by immunogen peptide.



Immunofluorescence analysis of MCF7 cells, using ARFGAP1 Antibody. The picture on the right is blocked with the synthesized peptide.



Western blot analysis of lysates from COS7 cells, using ARFGAP1 Antibody. The lane on the right is blocked with the synthesized peptide.

## Contact information

Orders: [order@immunoway.com](mailto:order@immunoway.com)  
 Support: [tech@immunoway.com](mailto:tech@immunoway.com)  
 Telephone: 877-594-3616 (Toll Free), 408-747-0185  
 Website: <http://www.immunoway.com>  
 Address: 2200 Ringwood Ave San Jose, CA 95131 USA



Please scan the QR code  
 to access additional  
 product information:  
**ARF GAP1 Rabbit  
 pAb**

For Research Use Only. Not for Use in Diagnostic Procedures.

[Antibody](#) | [ELISA Kits](#) | [Protein](#) | [Reagents](#)