

## APC1 Rabbit pAb

CatalogNo: YT0261 **Orthogonal Validated** 

### Key Features

**Host Species**

- Rabbit

**Reactivity**

- Human, Mouse

**Applications**

- IHC, IF, ELISA

**MW**

- 217kD (Calculated)

**Isotype**

- IgG

### Storage

**Storage\*** -15°C to -25°C/1 year (Do not lower than -25°C)**Formulation** Liquid in PBS containing 50% glycerol, 0.5% BSA and 0.02% sodium azide.

### Recommended Dilution Ratios

**IHC 1:100-1:300****ELISA 1:40000****IF 1:50-200**

### Basic Information

**Clonality** Polyclonal

### Immunogen Information

**Immunogen** The antiserum was produced against synthesized peptide derived from human APC1. AA range: 321-370**Specificity** APC1 Polyclonal Antibody detects endogenous levels of APC1 protein.

### Target Information

**Gene name** ANAPC1

**Protein Name** Anaphase-promoting complex subunit 1

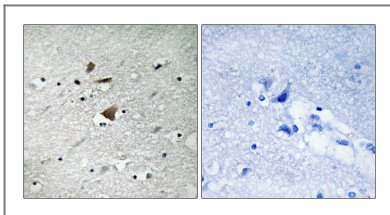
Organism	Gene ID	UniProt ID
Human	<a href="#">64682</a> ;	<a href="#">Q9H1A4</a> ;
Mouse	<a href="#">17222</a> ;	<a href="#">P53995</a> ;

**Cellular Localization** nucleoplasm,anaphase-promoting complex,cytosol,

**Tissue specificity** Colon,Epithelium,Ovary,Placenta,

**Function** Function:Component of the anaphase promoting complex/cyclosome (APC/C), a cell cycle-regulated E3 ubiquitin ligase that controls progression through mitosis and the G1 phase of the cell cycle.,pathway:Protein modification; protein ubiquitination.,PTM:Phosphorylated. Phosphorylation on Ser-355 occurs specifically during mitosis.,similarity:Belongs to the APC1 family.,similarity:Contains 4 PC repeats.,subunit:The APC/C is composed of at least 11 subunits.,

## Validation Data



Immunohistochemistry analysis of paraffin-embedded human brain tissue, using APC1 Antibody. The picture on the right is blocked with the synthesized peptide.

## Contact information

Orders: [order@immunoway.com](mailto:order@immunoway.com)  
Support: [tech@immunoway.com](mailto:tech@immunoway.com)  
Telephone: 877-594-3616 (Toll Free), 408-747-0185  
Website: <http://www.immunoway.com>  
Address: 2200 Ringwood Ave San Jose, CA 95131 USA



Please scan the QR code to access additional product information:  
**APC1 Rabbit pAb**

For Research Use Only. Not for Use in Diagnostic Procedures.

[Antibody](#) | [ELISA Kits](#) | [Protein](#) | [Reagents](#)