

AP-1/JunD Rabbit pAb

CatalogNo: YT0246

Key Features

Host Species

- Rabbit

Reactivity

- Human, Mouse, Rat

Applications

- WB, IHC, IF, ELISA

MW

- 39-42kD (Observed)

Isotype

- IgG

Storage

Storage* -15°C to -25°C/1 year (Do not lower than -25°C)

Formulation Liquid in PBS containing 50% glycerol, 0.5% BSA and 0.02% sodium azide.

Recommended Dilution Ratios

WB 1:500-1:2000

IHC 1:100-1:300

ELISA 1:10000

IF 1:50-200

Basic Information

Clonality Polyclonal

Immunogen Information

Immunogen The antiserum was produced against synthesized peptide derived from human c-Jun. AA range:40-89

Specificity AP-1 Polyclonal Antibody detects endogenous levels of AP-1 protein.

Target Information

Gene name JUN/JUND

Protein Name Transcription factor AP-1;jun;c-jun; AP-1; Transcription factor jun-D

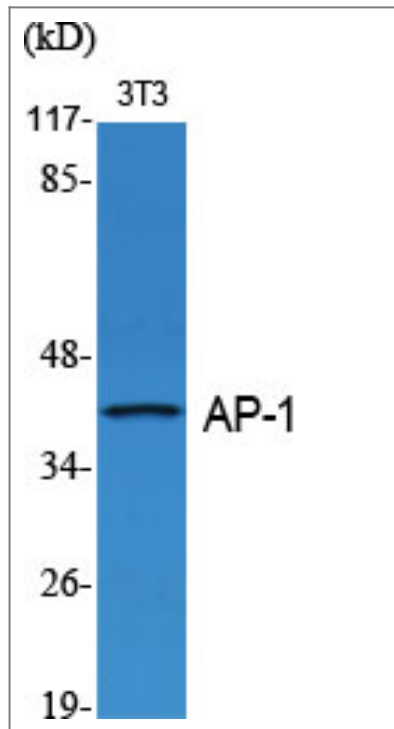
Organism	Gene ID	UniProt ID
Human	3725 ; 3727 ;	P05412 ; P17535 ;
Mouse	16476 ; 16478 ;	
Rat	24516 ; 24518 ;	P17325 ; P52909 ;

Cellular Localization Nucleus.

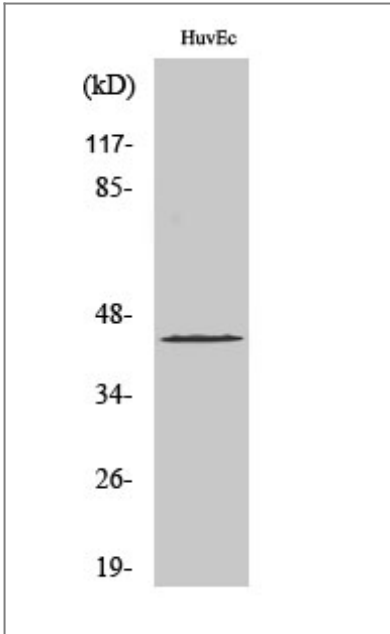
Tissue specificity Expressed in the developing and adult prostate and prostate cancer cells.

Function Function:Transcription factor that recognizes and binds to the enhancer heptamer motif 5'-TGA[CG]TCA-3'.PTM:Phosphorylation enhances the transcriptional activity. Phosphorylated by PRKDC.,similarity:Belongs to the bZIP family.,similarity:Belongs to the bZIP family. Jun subfamily.,similarity:Contains 1 bZIP domain.,subunit:Heterodimer with either FOS or BATF3. Interacts with HIVEP3 (By similarity). Interacts with SMAD3/SMAD4 heterodimers. Interacts with MYBBP1A, SPIB and TCF20. Interacts with COPS5; indirectly leading to its phosphorylation. Interacts with DSIPI; this interaction inhibits the binding of active AP1 to its target DNA.,

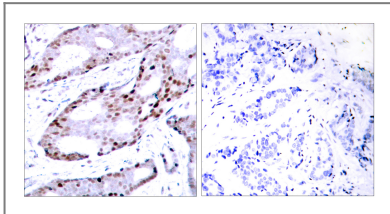
Validation Data



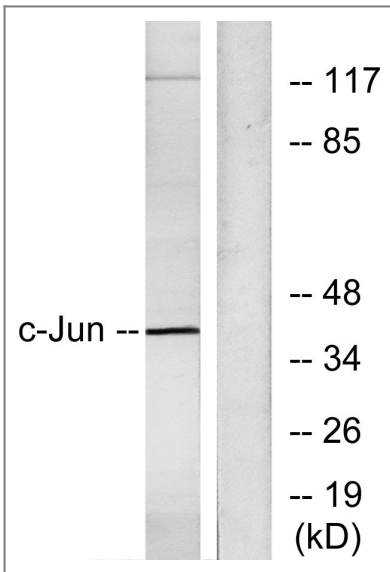
Western Blot analysis of various cells using AP-1/Jun D Polyclonal Antibody



Western Blot analysis of HuvEc cells using AP-1/Jun D Polyclonal Antibody



Immunohistochemistry analysis of paraffin-embedded human breast carcinoma tissue, using c-Jun Antibody. The picture on the right is blocked with the synthesized peptide.



Western blot analysis of lysates from HeLa cells, using c-Jun Antibody. The lane on the right is blocked with the synthesized peptide.

Contact information

Orders: order@immunoway.com
 Support: tech@immunoway.com
 Telephone: 877-594-3616 (Toll Free), 408-747-0185
 Website: <http://www.immunoway.com>
 Address: 2200 Ringwood Ave San Jose, CA 95131 USA



Please scan the QR code to access additional product information:
AP-1/JunD Rabbit pAb

