

ALS2CR4 Rabbit pAb

CatalogNo: YT0204

Key Features

Host Species

- Rabbit

Reactivity

- Human, Mouse

Applications

- WB, ELISA

MW

- 48kD (Observed)

Isotype

- IgG

Storage

Storage* -15°C to -25°C/1 year (Do not lower than -25°C)

Formulation Liquid in PBS containing 50% glycerol, 0.5% BSA and 0.02% sodium azide.

Recommended Dilution Ratios

WB 1:500-1:2000

ELISA 1:20000

Not yet tested in other applications.

Basic Information

Clonality Polyclonal

Immunogen Information

Immunogen The antiserum was produced against synthesized peptide derived from human ALS2CR4. AA range:181-230

Specificity ALS2CR4 Polyclonal Antibody detects endogenous levels of ALS2CR4 protein.

Target Information

Gene name TMEM237

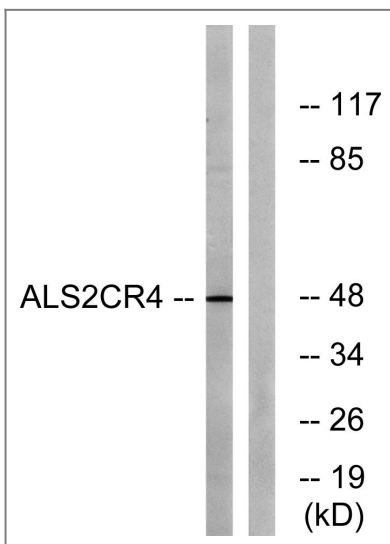
Protein Name Transmembrane protein 237

Organism	Gene ID	UniProt ID
Human	65062 ;	Q96Q45 ;
Mouse	381259 ;	Q3V0J1 ;

Cellular Localization Membrane ; Multi-pass membrane protein . Cell projection, cilium . Localizes at the proximal region of primary cilia were observed, consistent with localization to the transition zone. Anchored to the transition zone by RPGRIP1L.

Tissue specificity Brain,Fetal skin,Ovary,

Validation Data



Western blot analysis of lysates from Jurkat cells, using ALS2CR4 Antibody. The lane on the right is blocked with the synthesized peptide.

Contact information

Orders: order@immunoway.com
Support: tech@immunoway.com
Telephone: 877-594-3616 (Toll Free), 408-747-0185
Website: <http://www.immunoway.com>
Address: 2200 Ringwood Ave San Jose, CA 95131 USA



Please scan the QR code to access additional product information:
ALS2CR4 Rabbit pAb