

## ACTR-IB Rabbit pAb

CatalogNo: YT0106

### Key Features

#### Host Species

- Rabbit

#### Reactivity

- Human, Mouse, Rat

#### Applications

- WB, IHC, IF, ELISA

#### MW

- 56kD (Observed)

#### Isotype

- IgG

### Storage

**Storage\*** -15°C to -25°C/1 year (Do not lower than -25°C)

**Formulation** Liquid in PBS containing 50% glycerol, 0.5% BSA and 0.02% sodium azide.

### Recommended Dilution Ratios

**WB 1:500-1:2000**

**IHC 1:100-1:300**

**IF 1:200-1:1000**

**ELISA 1:5000**

**Not yet tested in other applications.**

### Basic Information

**Clonality** Polyclonal

### Immunogen Information

**Immunogen** The antiserum was produced against synthesized peptide derived from human ACV1B. AA range: 73-122

**Specificity** ACTR-IB Polyclonal Antibody detects endogenous levels of ACTR-IB protein.

## Target Information

**Gene name** ACVR1B

**Protein Name** Activin receptor type-1B

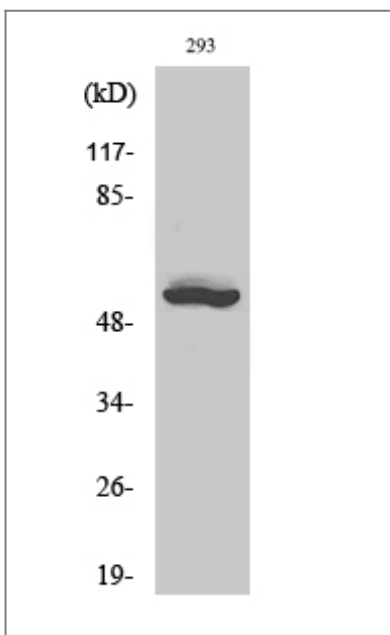
Organism	Gene ID	UniProt ID
Human	<a href="#">91</a> ;	<a href="#">P36896</a> ;
Mouse	<a href="#">11479</a> ;	<a href="#">Q61271</a> ;
Rat	<a href="#">29381</a> ;	<a href="#">P80202</a> ;

**Cellular Localization** Cell membrane ; Single-pass type I membrane protein .

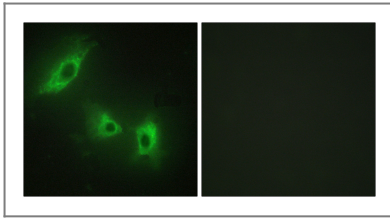
**Tissue specificity** Expressed in many tissues, most strongly in kidney, pancreas, brain, lung, and liver.

**Function** Catalytic activity:ATP + [receptor-protein] = ADP + [receptor-protein] phosphate.,cofactor:Magnesium or manganese.,Function:On ligand binding, forms a receptor complex consisting of two type II and two type I transmembrane serine/threonine kinases. Type II receptors phosphorylate and activate type I receptors which autophosphorylate, then bind and activate SMAD transcriptional regulators. Phosphorylates TTRAP.,PTM:Autophosphorylated.,similarity:Belongs to the protein kinase superfamily. TKL Ser/Thr protein kinase family. TGFBR receptor subfamily.,similarity:Contains 1 GS domain.,similarity:Contains 1 protein kinase domain.,subunit:Interacts with AIP1. Part of a complex consisting of AIP1, ACVR2A, ACVR1B and SMAD3. Interacts with TTRAP.,tissue specificity:Expressed in many tissues, most strongly in kidney, pancreas, brain, lung, and liver.,

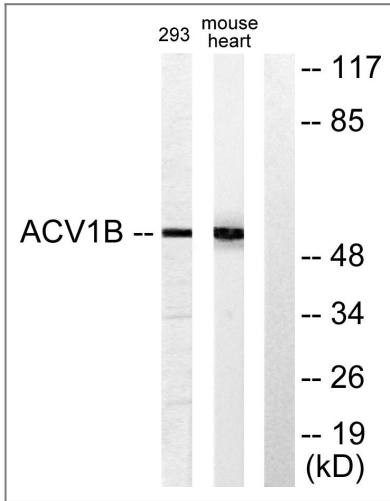
## Validation Data



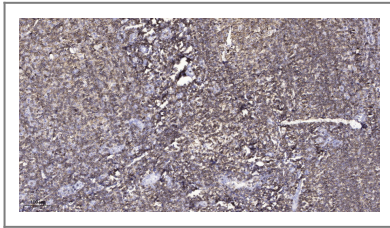
Western Blot analysis of various cells using ACTR-1B Polyclonal Antibody diluted at 1:1000



Immunofluorescence analysis of HeLa cells, using ACV1B Antibody. The picture on the right is blocked with the synthesized peptide.



Western blot analysis of lysates from 293 and mouse liver cells, using ACV1B Antibody. The lane on the right is blocked with the synthesized peptide.



Immunohistochemical analysis of paraffin-embedded human tonsil. 1, Antibody was diluted at 1:200(4° overnight). 2, Tris-EDTA,pH9.0 was used for antigen retrieval. 3,Secondary antibody was diluted at 1:200(room temperature, 45min).

## Contact information

Orders: [order@immunoway.com](mailto:order@immunoway.com)  
Support: [tech@immunoway.com](mailto:tech@immunoway.com)  
Telephone: 877-594-3616 (Toll Free), 408-747-0185  
Website: <http://www.immunoway.com>  
Address: 2200 Ringwood Ave San Jose, CA 95131 USA



Please scan the QR code to access additional product information:  
**ACTR-IB Rabbit pAb**

For Research Use Only. Not for Use in Diagnostic Procedures.

[Antibody](#) | [ELISA Kits](#) | [Protein](#) | [Reagents](#)