

ACAT-1 Rabbit pAb

CatalogNo: YT0071

Key Features

Host Species

- Rabbit

Reactivity

- Human, Mouse, Rat

Applications

- WB, IHC, IF, ELISA

MW

- 45kD (Observed)

Isotype

- IgG

Recommended Dilution Ratios

WB 1:500-1:2000

IHC 1:100-1:300

ELISA 1:40000

IF 1:50-200

Storage

Storage* -15°C to -25°C/1 year (Do not lower than -25°C)

Formulation Liquid in PBS containing 50% glycerol, 0.5% BSA and 0.02% sodium azide.

Basic Information

Clonality Polyclonal

Immunogen Information

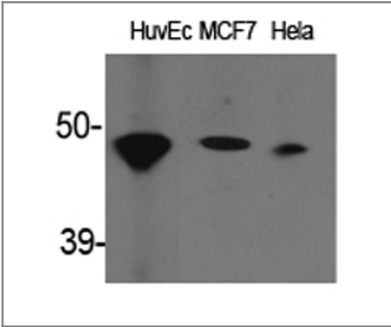
Immunogen The antiserum was produced against synthesized peptide derived from human ACAT1. AA range: 221-270

Specificity ACAT-1 Polyclonal Antibody detects endogenous levels of ACAT-1 protein.

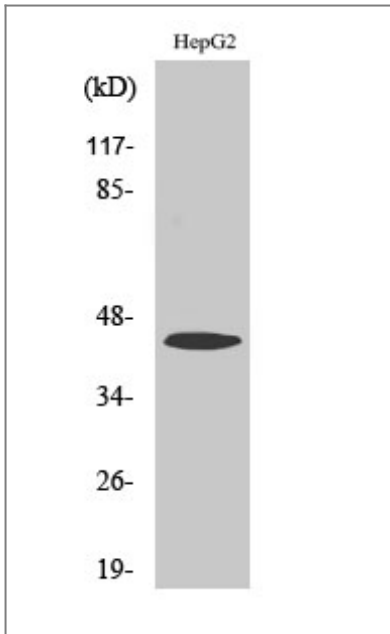
Target Information

Gene name	ACAT1		
Protein Name	Acetyl-CoA acetyltransferase mitochondrial		
	Organism	Gene ID	UniProt ID
	Human	38 ;	P24752 ;
	Mouse	110446 ;	Q8QZT1 ;
	Rat	25014 ;	P17764 ;
Cellular Localization	Mitochondrion .		
Tissue specificity	Adipocyte,Brain,Fetal brain cortex,		
Function	Catalytic activity:2 acetyl-CoA = CoA + acetoacetyl-CoA.,Disease:Defects in ACAT1 are a cause of 3-ketothiolase deficiency (3KTD) [MIM:203750]; also known as alpha-methylacetoaceticaciduria. 3KTD is an inborn error of isoleucine catabolism characterized by intermittent ketoacidotic attacks associated with unconsciousness. Some patients die during an attack or are mentally retarded. Urinary excretion of 2-methyl-3-hydroxybutyric acid, 2-methylacetoacetic acid, triglylglycine, butanone is increased. It seems likely that the severity of this disease correlates better with the environmental or acquired factors than with the ACAT1 genotype.,enzyme regulation:Activated by potassium ions, but not sodium ions.,Function:Plays a major role in ketone body metabolism.,similarity:Belongs to the thiolase family.,subunit:Homotetramer.,		

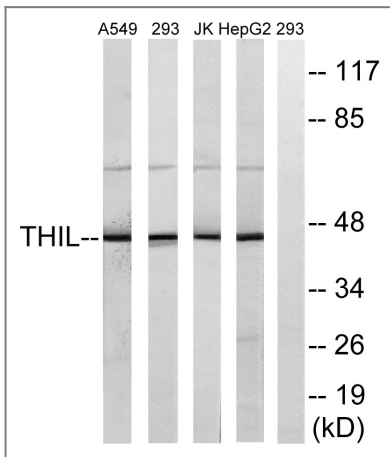
| Validation Data



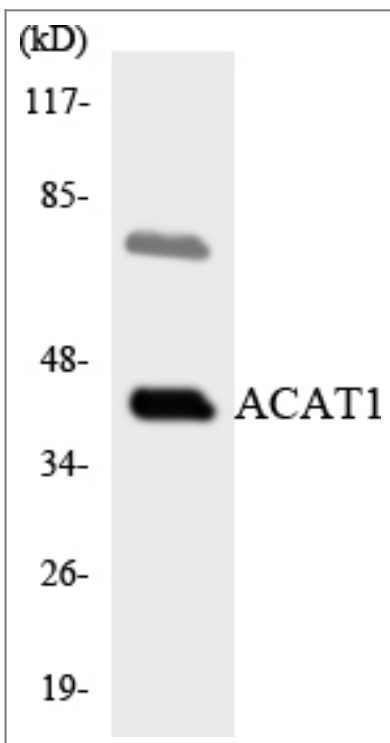
Western Blot analysis of various cells using ACAT-1 Polyclonal Antibody



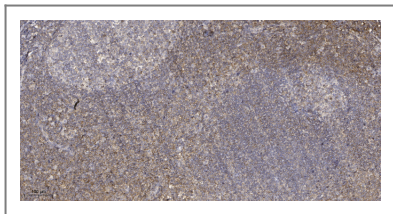
Western Blot analysis of A549 cells using ACAT-1 Polyclonal Antibody



Western blot analysis of lysates from HepG2, Jurkat, 293, and A549 cells, using ACAT1 Antibody. The lane on the right is blocked with the synthesized peptide.



Western blot analysis of the lysates from HepG2 cells using ACAT1 antibody.



Immunohistochemical analysis of paraffin-embedded human tonsil. 1, Antibody was diluted at 1:200(4° overnight). 2, Tris-EDTA,pH9.0 was used for antigen retrieval. 3,Secondary antibody was diluted at 1:200(room temperature, 45min).

| Contact information

Orders: order@immunoway.com
Support: tech@immunoway.com
Telephone: 877-594-3616 (Toll Free), 408-747-0185
Website: <http://www.immunoway.com>
Address: 2200 Ringwood Ave San Jose, CA 95131 USA



Please scan the QR code to access additional product information:
ACAT-1 Rabbit pAb

For Research Use Only. Not for Use in Diagnostic Procedures.

[Antibody](#) | [ELISA Kits](#) | [Protein](#) | [Reagents](#)