

# STAT4 (Phospho Ser721) Rabbit pAb

CatalogNo: YP1857

Orthogonal Validated 

## Key Features

### Host Species

- Rabbit

### Reactivity

- Human, Mouse

### Applications

- IHC, WB

### MW

- 86kD (Observed)

## Recommended Dilution Ratios

WB 1:500-2000

IHC 1:50-200

## Storage

**Storage\*** -15°C to -25°C/1 year (Do not lower than -25°C)**Formulation** Liquid in PBS containing 50% glycerol, and 0.02% sodium azide.

## Basic Information

**Clonality** Polyclonal

## Immunogen Information

**Immunogen** Synthesized peptide derived from human STAT4 (Phospho Ser721)

**Specificity** This antibody detects endogenous levels of STAT4 (Phospho Ser721) Rabbit pAb at Human, Mouse. The name of modified sites may be influenced by many factors, such as species (the modified site was not originally found in human samples) and the change of protein sequence (the previous protein sequence is incomplete, and the protein sequence may be prolonged with the development of protein sequencing technology). When naming, we will use the "numbers" in historical reference to keep the sites consistent with the reports. The antibody binds to the following modification sequence (lowercase letters are modification sites): PMsPS

---

## | Target Information

**Gene name** STAT4

**Protein Name** Signal transducer and activator of transcription 4

| Organism | Gene ID                 | UniProt ID               |
|----------|-------------------------|--------------------------|
| Human    | <a href="#">6775</a> ;  | <a href="#">Q14765</a> ; |
| Mouse    | <a href="#">20849</a> ; | <a href="#">P42228</a> ; |

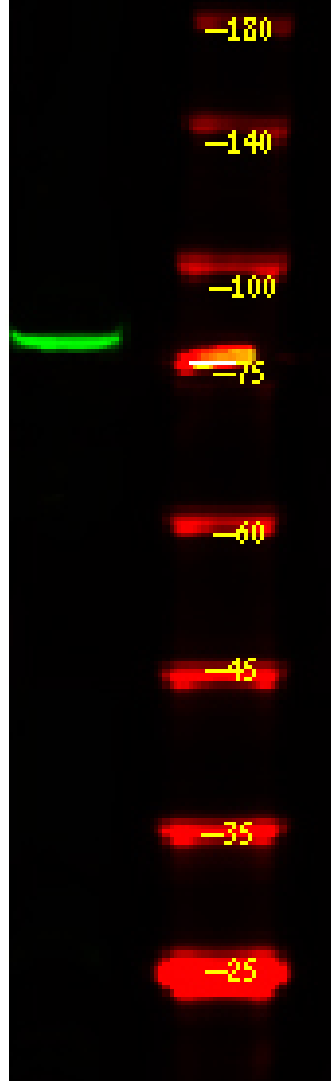
**Cellular Localization** Cytoplasm. Nucleus. Translocated into the nucleus in response to phosphorylation.

**Function** Disease:Genetic variations in STAT4 are associated with susceptibility to rheumatoid arthritis (RA) [MIM:180300]. Rheumatoid arthritis is a complex, multifactorial disorder. It is one of the most common autoimmune diseases and it is characterized by inflammation of synovial tissue and joint destruction.,Disease:Genetic variations in STAT4 are associated with susceptibility to systemic lupus erythematosus type 11 (SLEB11) [MIM:612253]. Systemic lupus erythematosus (SLE) is a chronic autoimmune disease with a complex genetic basis. SLE is an inflammatory, and often febrile multisystemic disorder of connective tissue characterized principally by involvement of the skin, joints, kidneys, and serosal membranes. It is thought to represent a failure of the regulatory mechanisms of the autoimmune system.,Function:Carries out a dual Function: signal transduction and activation of transcription. Involved in IL12 signaling.,PTM:Tyrosine phosphorylated. Serine phosphorylation is also required for maximal transcriptional activity.,similarity:Belongs to the transcription factor STAT family.,similarity:Contains 1 SH2 domain.,subcellular location:Translocated into the nucleus in response to phosphorylation.,subunit:Forms a homodimer or a heterodimer with a related family member (By similarity). The SH2 domain interacts, in vitro, with IL12RB2 via a short cytoplasmic domain.,

---

## | Validation Data

Western Blot analysis of 1 HeLa cell, 2 LPS 100ng/mL 30min treated ,using primary antibody at 1:1000 dilution. Secondary antibody(catalog#:RS23920) was diluted at 1:10000



## Contact information

Orders: [order@immunoway.com](mailto:order@immunoway.com)  
Support: [tech@immunoway.com](mailto:tech@immunoway.com)  
Telephone: 877-594-3616 (Toll Free), 408-747-0185  
Website: <http://www.immunoway.com>  
Address: 2200 Ringwood Ave San Jose, CA 95131 USA



Please scan the QR code to access additional product information:  
**STAT4 (Phospho Ser721) Rabbit pAb**