

DAPK2 (Phospho Ser318) Rabbit pAb

CatalogNo: YP1142

Key Features

Host Species

- Rabbit

Reactivity

- Human, Mouse, Rat

Applications

- IHC, IF, ELISA

MW

- 43kD (Calculated)

Isotype

- IgG

Storage

Storage* -15°C to -25°C/1 year (Do not lower than -25°C)

Formulation Liquid in PBS containing 50% glycerol, 0.5% BSA and 0.02% sodium azide.

Recommended Dilution Ratios

IHC 1:100-1:300

IF 1:200-1:1000

ELISA 1:5000

Not yet tested in other applications.

Basic Information

Clonality Polyclonal

Immunogen Information

Immunogen The antiserum was produced against synthesized peptide derived from human DAPK2 around the phosphorylation site of Ser318. AA range: 284-333

Specificity Phospho-DAPK2 (S318) Polyclonal Antibody detects endogenous levels of DAPK2 protein only when phosphorylated at S318. The name of modified sites may be influenced by many factors, such as species (the modified site was not originally found in human samples) and the change of protein sequence (the previous protein sequence is incomplete, and the protein sequence may be prolonged with the development of protein sequencing technology). When naming, we will use the "numbers" in historical reference to keep the sites consistent with the reports. The antibody binds to the following modification sequence (lowercase letters are modification sites): KLsFS

Target Information

Gene name DAPK2

Protein Name Death-associated protein kinase 2

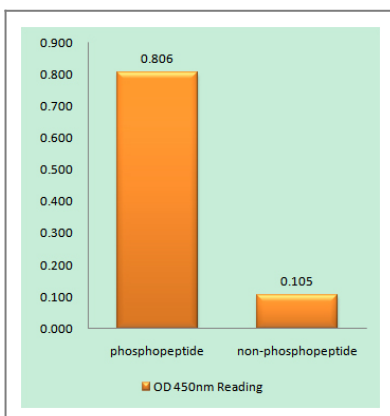
Organism	Gene ID	UniProt ID
Human	23604 ;	Q9UIK4 ;
Mouse	13143 ;	Q8VDF3 ;

Cellular Localization Cytoplasm. Cytoplasmic vesicle, autophagosome lumen.

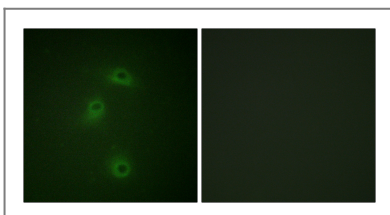
Tissue specificity Expressed in neutrophils and eosinophils (PubMed:24163421). Isoform 2 is expressed in embryonic stem cells (at protein level). Isoform 1 is ubiquitously expressed in all tissue types examined with high levels in heart, lung and skeletal muscle.

Function Catalytic activity:ATP + a protein = ADP + a phosphoprotein.,cofactor:Magnesium.,enzyme regulation:Negatively regulated by autophosphorylation on Ser-318.,Function:Calcium/calmodulin-dependent serine/threonine kinase which acts as a positive regulator of apoptosis.,similarity:Belongs to the protein kinase superfamily. CAMK Ser/Thr protein kinase family. DAP kinase subfamily.,similarity:Contains 1 protein kinase domain.,subunit:Homodimer. Homodimerization is required for apoptotic function and is inhibited by autophosphorylation at Ser-318.,tissue specificity:Ubiquitously expressed in all tissue types examined. High levels in heart, lung and skeletal muscle.,

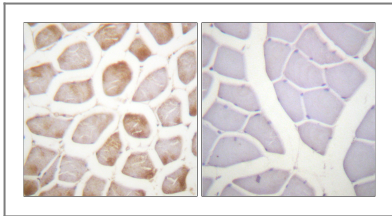
Validation Data



Enzyme-Linked Immunosorbent Assay (Phospho-ELISA) for Immunogen Phosphopeptide (Phospho-left) and Non-Phosphopeptide (Phospho-right), using DAPK2 (Phospho-Ser318) Antibody



Immunofluorescence analysis of COS7 cells, using DAPK2 (Phospho-Ser318) Antibody. The picture on the right is blocked with the phospho peptide.



Immunohistochemistry analysis of paraffin-embedded human skeletal muscle, using DAPK2 (Phospho-Ser318) Antibody. The picture on the right is blocked with the phospho peptide.

| Contact information

Orders: order@immunoway.com
Support: tech@immunoway.com
Telephone: 877-594-3616 (Toll Free), 408-747-0185
Website: <http://www.immunoway.com>
Address: 2200 Ringwood Ave San Jose, CA 95131 USA



Please scan the QR code to access additional product information:
DAPK2 (Phospho Ser318) Rabbit pAb

For Research Use Only. Not for Use in Diagnostic Procedures.

[Antibody](#) | [ELISA Kits](#) | [Protein](#) | [Reagents](#)