

c-Myb (Phospho Ser532) Rabbit pAb

CatalogNo: YP1102

| Key Features

Host Species

- Rabbit

Reactivity

- Human, Mouse

Applications

- IHC, IF, ELISA

MW

- 72kD (Calculated)

Isotype

- IgG

| Recommended Dilution Ratios

IHC 1:100-1:300

ELISA 1:5000

IF 1:50-200

| Storage

Storage*

-15°C to -25°C/1 year (Do not lower than -25°C)

Formulation

Liquid in PBS containing 50% glycerol, 0.5% BSA and 0.02% sodium azide.

| Basic Information

Clonality

Polyclonal

| Immunogen Information

Immunogen

The antiserum was produced against synthesized peptide derived from human Myb around the phosphorylation site of Ser532. AA range: 496-545

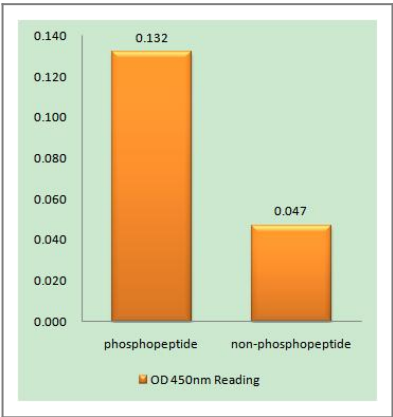
Specificity

Phospho-c-Myb (S532) Polyclonal Antibody detects endogenous levels of c-Myb protein only when phosphorylated at S532. The name of modified sites may be influenced by many factors, such as species (the modified site was not originally found in human samples) and the change of protein sequence (the previous protein sequence is incomplete, and the protein sequence may be prolonged with the development of protein sequencing technology). When naming, we will use the "numbers" in historical reference to keep the sites consistent with the reports. The antibody binds to the following modification sequence (lowercase letters are modification sites): VESPT

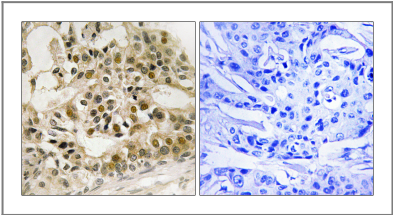
Target Information

Gene name	MYB		
Protein Name	Transcriptional activator Myb		
	Organism	Gene ID	UniProt ID
	Human	4602 ;	P10242 ;
	Mouse	17863 ;	P06876 ;
Cellular Localization	Nucleus .		
Tissue specificity	Liver,Placenta,Testis,		
Function	Domain:Comprised of 3 domains; an N-terminal DNA-binding domain, a centrally located transcriptional activation domain and a C-terminal domain involved in transcriptional repression.,Function:Transcriptional activator; DNA-binding protein that specifically recognize the sequence 5'-YAAC[GT]G-3'. Plays an important role in the control of proliferation and differentiation of hematopoietic progenitor cells.,PTM:Phosphorylated by NLK on multiple sites, which induces proteasomal degradation.,PTM:Ubiquitinated; mediated by SIAH1 and leading to its subsequent proteasomal degradation.,similarity:Contains 3 HTH myb-type DNA-binding domains.,subunit:Binds MYBBP1A. Interacts with HIPK2, MAF and NLK.,		

Validation Data



Enzyme-Linked Immunosorbent Assay (Phospho-ELISA) for Immunogen Phosphopeptide (Phospho-left) and Non-Phosphopeptide (Phospho-right), using Myb (Phospho-Ser532) Antibody



Immunohistochemistry analysis of paraffin-embedded human breast carcinoma, using Myb (Phospho-Ser532) Antibody. The picture on the right is blocked with the phospho peptide.

| Contact information

Orders: order@immunoway.com
Support: tech@immunoway.com
Telephone: 877-594-3616 (Toll Free), 408-747-0185
Website: <http://www.immunoway.com>
Address: 2200 Ringwood Ave San Jose, CA 95131 USA



Please scan the QR code
to access additional
product information:
**c-Myb (Phospho
Ser532) Rabbit pAb**

For Research Use Only. Not for Use in Diagnostic Procedures.

[Antibody](#) | [ELISA Kits](#) | [Protein](#) | [Reagents](#)