

## SPAK (Phospho Ser323) Rabbit pAb

CatalogNo: YP1059

### Key Features

#### Host Species

- Rabbit

#### Reactivity

- Human, Mouse, Rat

#### Applications

- IHC, IF, ELISA

#### MW

- 60kD (Calculated)

#### Isotype

- IgG

### Storage

**Storage\*** -15°C to -25°C/1 year (Do not lower than -25°C)

**Formulation** Liquid in PBS containing 50% glycerol, 0.5% BSA and 0.02% sodium azide.

### Recommended Dilution Ratios

**IHC 1:100-1:300**

**ELISA 1:5000**

**IF 1:50-200**

### Basic Information

**Clonality** Polyclonal

### Immunogen Information

**Immunogen** The antiserum was produced against synthesized peptide derived from human STK39 around the phosphorylation site of Ser325. AA range: 291-340

**Specificity** Phospho-SPAK (S325) Polyclonal Antibody detects endogenous levels of SPAK protein only when phosphorylated at S325. The name of modified sites may be influenced by many factors, such as species (the modified site was not originally found in human samples) and the change of protein sequence (the previous protein sequence is incomplete, and the protein sequence may be prolonged with the development of protein sequencing technology). When naming, we will use the "numbers" in historical reference to keep the sites consistent with the reports. The antibody binds to the following modification sequence (lowercase letters are modification sites): DP<sub>s</sub>KR

## Target Information

**Gene name** STK39

**Protein Name** STE20/SPS1-related proline-alanine-rich protein kinase

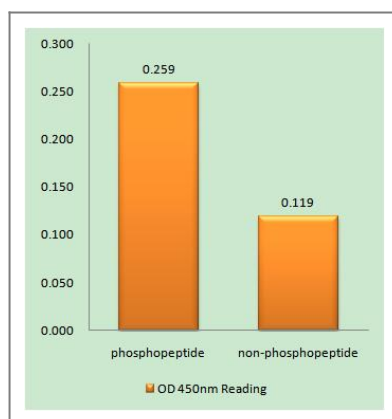
Organism	Gene ID	UniProt ID
Human	<a href="#">27347</a> ;	<a href="#">Q9UEW8</a> ;
Mouse	<a href="#">53416</a> ;	<a href="#">Q9Z1W9</a> ;
Rat	<a href="#">54348</a> ;	<a href="#">O88506</a> ;

**Cellular Localization** Cytoplasm . Nucleus . Nucleus when caspase-cleaved. .

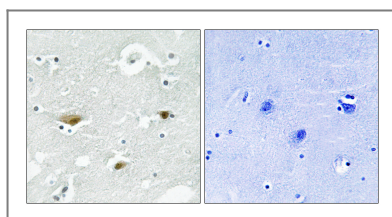
**Tissue specificity** Predominantly expressed in brain and pancreas followed by heart, lung, kidney, skeletal muscle, liver, placenta and testis.

**Function** Catalytic activity:ATP + a protein = ADP + a phosphoprotein.,Domain:PAPA box (proline-alanine repeats) may target the kinase to a specific subcellular location by facilitating interaction with intracellular proteins such as actin or actin-like proteins.,Function:May act as a mediator of stress-activated signals.,similarity:Belongs to the protein kinase superfamily. STE Ser/Thr protein kinase family. STE20 subfamily.,similarity:Contains 1 protein kinase domain.,subcellular location:Nucleus when caspase-cleaved.,tissue specificity:Predominantly expressed in brain and pancreas followed by heart, lung, kidney, skeletal muscle, liver, placenta and testis.,

## Validation Data



Enzyme-Linked Immunosorbent Assay (Phospho-ELISA) for Immunogen Phosphopeptide (Phospho-left) and Non-Phosphopeptide (Phospho-right), using STK39 (Phospho-Ser325) Antibody



Immunohistochemistry analysis of paraffin-embedded human brain, using STK39 (Phospho-Ser325) Antibody. The picture on the right is blocked with the phospho peptide.

## | Contact information

Orders: order@immunoway.com  
Support: tech@immunoway.com  
Telephone: 877-594-3616 (Toll Free), 408-747-0185  
Website: <http://www.immunoway.com>  
Address: 2200 Ringwood Ave San Jose, CA 95131 USA



Please scan the QR code to access additional product information:  
**SPAK (Phospho Ser323) Rabbit pAb**

---

For Research Use Only. Not for Use in Diagnostic Procedures.

[Antibody](#) | [ELISA Kits](#) | [Protein](#) | [Reagents](#)