

MAD1 (Phospho Ser428) Rabbit pAb

CatalogNo: YP1007

Key Features

Host Species

- Rabbit

Reactivity

- Human, Mouse, Rat

Applications

- IHC, IF, ELISA

MW

- 83kD (Calculated)

Isotype

- IgG

Storage

Storage* -15°C to -25°C/1 year (Do not lower than -25°C)

Formulation Liquid in PBS containing 50% glycerol, 0.5% BSA and 0.02% sodium azide.

Recommended Dilution Ratios

IHC 1:100-1:300

ELISA 1:5000

IF 1:50-200

Basic Information

Clonality Polyclonal

Immunogen Information

Immunogen The antiserum was produced against synthesized peptide derived from human MAD1 around the phosphorylation site of Ser428. AA range: 394-443

Specificity Phospho-MAD1 (S428) Polyclonal Antibody detects endogenous levels of MAD1 protein only when phosphorylated at S428. The name of modified sites may be influenced by many factors, such as species (the modified site was not originally found in human samples) and the change of protein sequence (the previous protein sequence is incomplete, and the protein sequence may be prolonged with the development of protein sequencing technology). When naming, we will use the "numbers" in historical reference to keep the sites consistent with the reports. The antibody binds to the following modification sequence (lowercase letters are modification sites): EYsPQ

| Target Information

Gene name MAD1L1

Protein Name Mitotic spindle assembly checkpoint protein MAD1

Organism	Gene ID	UniProt ID
Human	8379 ;	Q9Y6D9 ;
Mouse		Q9WTX8 ;

Cellular Localization

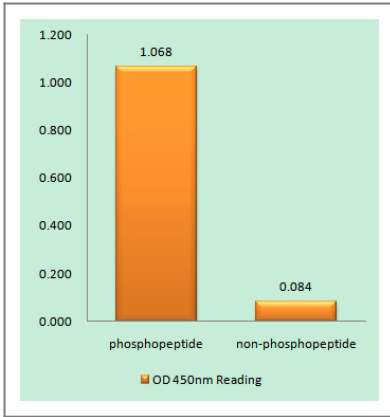
Nucleus . Chromosome, centromere, kinetochore . Nucleus envelope . Cytoplasm, cytoskeleton, microtubule organizing center, centrosome . Cytoplasm, cytoskeleton, spindle . Cytoplasm, cytoskeleton, spindle pole . Co-localizes with TPR at the nucleus envelope during interphase and throughout the cell cycle (PubMed:22351768, PubMed:18981471). From the beginning to the end of mitosis, it is seen to move from a diffusely nuclear distribution to the centrosome, to the spindle midzone and finally to the midbody (PubMed:9546394). Localizes to kinetochores during prometaphase (PubMed:22351768, PubMed:29162720). Does not localize to kinetochores during metaphase (PubMed:29162720). Colocalizes with NEK2 at the kinetochore (PubMed:14978040). Colocalizes with IK at spindle poles during metaphase and anaphase (PubMed:22351768). . ; [Isoform 3]: Cytoplasm .

Tissue specificity [Isoform 1]: Expressed in hepatocellular carcinomas and hepatoma cell lines (at protein level). ; [Isoform 3]: Expressed in hepatocellular carcinomas and hepatoma cell lines (at protein level).

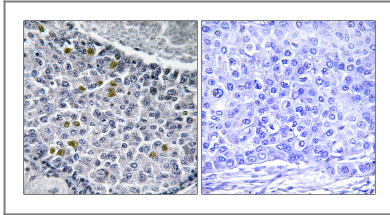
Function

Disease:Defects in MAD1L1 are involved in the development and/or progression of various types of cancer.,Function:Component of the spindle-assembly checkpoint that prevents the onset of anaphase until all chromosomes are properly aligned at the metaphase plate. May recruit MAD2L1 to unattached kinetochores. Has a role in the correct positioning of the septum. Required for anchoring MAD2L1 to the nuclear periphery.,induction:Increased by TP53.,PTM:Phosphorylated; by BUB1. Become hyperphosphorylated in late S through M phases or after mitotic spindle damage. Phosphorylated upon DNA damage, probably by ATM or ATR.,similarity:Belongs to the MAD1 family.,subcellular location:From the beginning to the end of mitosis, it is seen to move from a diffusely nuclear distribution to the centrosome, to the spindle midzone and finally to the midbody.,subunit:Homodimer. Heterodimerizes with MAD2L1 in order to form a tetrameric MAD1L1-MAD2L1 core complex. Perturbation of the original MAD1L1-MAD2L1 structure by the spindle checkpoint may decrease MAD2L1 affinity for MAD1L1. CDC20 can compete with MAD1L1 for MAD2L1 binding, until the attachment and/or tension dampen the checkpoint signal, preventing further release of MAD2L1 on to CDC20. Also able to interact with the BUB1/BUB3 complex and the viral Tax protein. Interacts with TPR.,tissue specificity:Expressed weakly at G0/G1 and highly at late S and G2/M phase.,

| Validation Data



Enzyme-Linked Immunosorbent Assay (Phospho-ELISA) for Immunogen Phosphopeptide (Phospho-left) and Non-Phosphopeptide (Phospho-right), using MAD1 (Phospho-Ser428) Antibody



Immunohistochemistry analysis of paraffin-embedded human breast carcinoma, using MAD1 (Phospho-Ser428) Antibody. The picture on the right is blocked with the phospho peptide.

Contact information

Orders: order@immunoway.com
 Support: tech@immunoway.com
 Telephone: 877-594-3616 (Toll Free), 408-747-0185
 Website: <http://www.immunoway.com>
 Address: 2200 Ringwood Ave San Jose, CA 95131 USA



Please scan the QR code to access additional product information:
MAD1 (Phospho Ser428) Rabbit pAb

For Research Use Only. Not for Use in Diagnostic Procedures.

[Antibody](#) | [ELISA Kits](#) | [Protein](#) | [Reagents](#)