

Net (Phospho Ser357) Rabbit pAb

CatalogNo: YP0920 **Orthogonal Validated** 

Key Features

Host Species

- Rabbit

Reactivity

- Human, Mouse, Monkey

Applications

- WB, IHC, IF, ELISA

MW

- 38kD (Observed)

Isotype

- IgG

Storage

Storage* -15°C to -25°C/1 year (Do not lower than -25°C)**Formulation** Liquid in PBS containing 50% glycerol, 0.5% BSA and 0.02% sodium azide.

Recommended Dilution Ratios

WB 1:500-1:2000**IHC 1:100-1:300****IF 1:200-1:1000****ELISA 1:20000****Not yet tested in other applications.**

Basic Information

Clonality Polyclonal

Immunogen Information

Immunogen The antiserum was produced against synthesized peptide derived from human Elk3 around the phosphorylation site of Ser357. AA range: 323-372

Specificity

Phospho-Net (S357) Polyclonal Antibody detects endogenous levels of Net protein only when phosphorylated at S357. The name of modified sites may be influenced by many factors, such as species (the modified site was not originally found in human samples) and the change of protein sequence (the previous protein sequence is incomplete, and the protein sequence may be prolonged with the development of protein sequencing technology). When naming, we will use the "numbers" in historical reference to keep the sites consistent with the reports. The antibody binds to the following modification sequence (lowercase letters are modification sites):SLsPV

Target Information

Gene name ELK3

Protein Name ETS domain-containing protein Elk-3

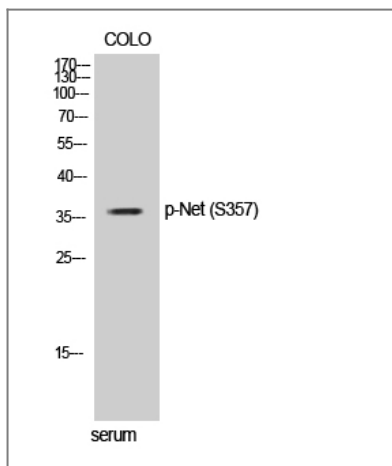
Organism	Gene ID	UniProt ID
Human	2004;	P41970;
Mouse	13713;	P41971;

Cellular Localization Nucleus.

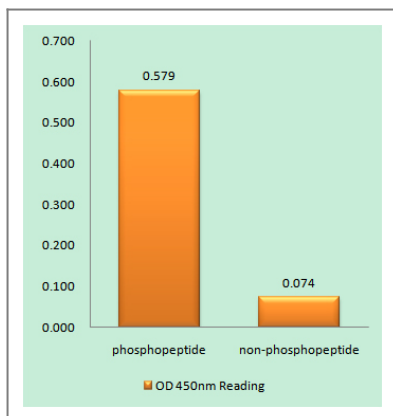
Tissue specificity Brain, Epithelium, Placenta,

Function Function: May be a negative regulator of transcription, but can activate transcription when coexpressed with Ras, Src or Mos. Forms a ternary complex with the serum response factor and the ETS and SRF motifs of the Fos serum response element., similarity: Belongs to the ETS family., similarity: Contains 1 ETS DNA-binding domain., subunit: Interacts with CTBP1.,

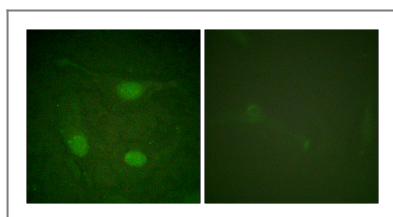
Validation Data



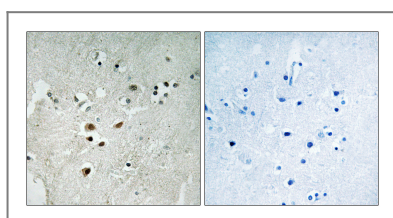
Western Blot analysis of COLO cells using Phospho-Net (S357) Polyclonal Antibody



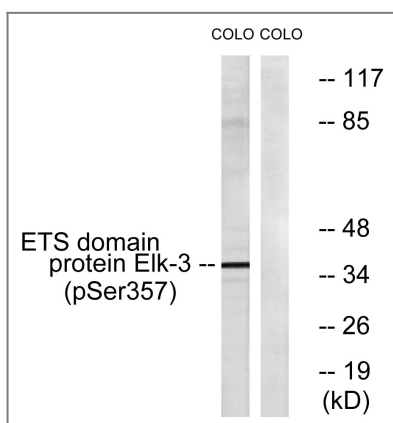
Enzyme-Linked Immunosorbent Assay (Phospho-ELISA) for Immunogen Phosphopeptide (Phospho-left) and Non-Phosphopeptide (Phospho-right), using Elk3 (Phospho-Ser357) Antibody



Immunofluorescence analysis of HeLa cells, using Elk3 (Phospho-Ser357) Antibody. The picture on the right is blocked with the phospho peptide.



Immunohistochemistry analysis of paraffin-embedded human brain, using Elk3 (Phospho-Ser357) Antibody. The picture on the right is blocked with the phospho peptide.



Western blot analysis of lysates from COLO205 cells treated with serum 20% 15', using Elk3 (Phospho-Ser357) Antibody. The lane on the right is blocked with the phospho peptide.

Contact information

Orders: order@immunoway.com
 Support: tech@immunoway.com
 Telephone: 877-594-3616 (Toll Free), 408-747-0185
 Website: <http://www.immunoway.com>
 Address: 2200 Ringwood Ave San Jose, CA 95131 USA



Please scan the QR code to access additional product information:
Net (Phospho Ser357) Rabbit pAb