

CHOP (Phospho Ser30) Rabbit pAb

CatalogNo: YP0915

Orthogonal Validated 

Key Features

Host Species

- Rabbit

Reactivity

- Human, Mouse

Applications

- WB, IHC, IF, ELISA

MW

- 19kD (Observed)

Isotype

- IgG

Recommended Dilution Ratios

WB 1:500-1:2000**IHC 1:100-1:300****IF 1:200-1:1000****ELISA 1:20000****Not yet tested in other applications.**

Storage

Storage*

-15°C to -25°C/1 year (Do not lower than -25°C)

Formulation

Liquid in PBS containing 50% glycerol, 0.5% BSA and 0.02% sodium azide.

Basic Information

Clonality

Polyclonal

Immunogen Information

Immunogen

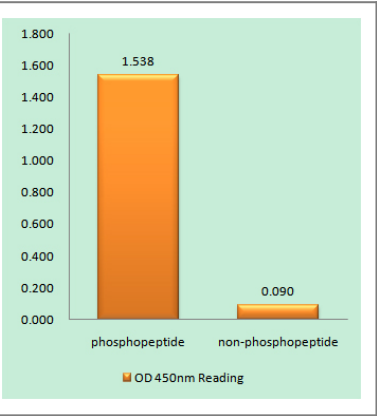
The antiserum was produced against synthesized peptide derived from human CHOP around the phosphorylation site of Ser30. AA range: 15-64

Specificity Phospho-CHOP (S30) Polyclonal Antibody detects endogenous levels of CHOP protein only when phosphorylated at S30. The name of modified sites may be influenced by many factors, such as species (the modified site was not originally found in human samples) and the change of protein sequence (the previous protein sequence is incomplete, and the protein sequence may be prolonged with the development of protein sequencing technology). When naming, we will use the "numbers" in historical reference to keep the sites consistent with the reports. The antibody binds to the following modification sequence (lowercase letters are modification sites):VLsSD

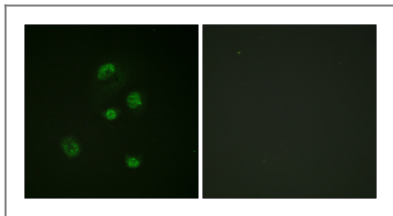
Target Information

Gene name	DDIT3		
Protein Name	DNA damage-inducible transcript 3 protein		
	Organism	Gene ID	UniProt ID
	Human	1649;	P35638;
	Mouse	13198;	P35639;
Cellular Localization	Cytoplasm . Nucleus . Present in the cytoplasm under non-stressed conditions and ER stress leads to its nuclear accumulation. .		
Tissue specificity	Muscle,Skeletal muscle,		
Function	Disease:A chromosomal aberration involving DDIT3 is found in a form of malignant myxoid liposarcoma [MIM:126337]. Translocation t(12;16)(q13;p11) with FUS.,Function:Inhibits the DNA-binding activity of C/EBP and LAP by forming heterodimers that cannot bind DNA.,similarity:Belongs to the bZIP family.,similarity:Contains 1 bZIP domain.,subunit:Heterodimer.,		

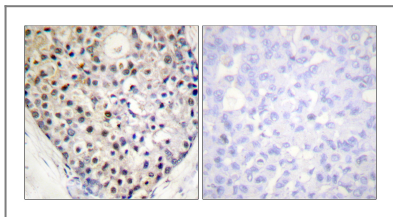
Validation Data



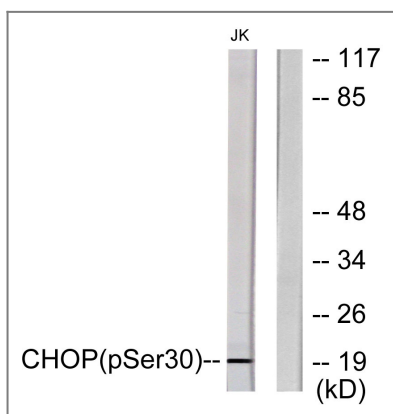
Enzyme-Linked Immunosorbent Assay (Phospho-ELISA) for Immunogen Phosphopeptide (Phospho-left) and Non-Phosphopeptide (Phospho-right), using CHOP (Phospho-Ser30) Antibody



Immunofluorescence analysis of A549 cells, using CHOP (Phospho-Ser30) Antibody. The picture on the right is blocked with the phospho peptide.



Immunohistochemistry analysis of paraffin-embedded human breast carcinoma, using CHOP (Phospho-Ser30) Antibody. The picture on the right is blocked with the phospho peptide.



Western blot analysis of lysates from Jurkat cells treated with PMA 125ng/ml 30', using CHOP (Phospho-Ser30) Antibody. The lane on the right is blocked with the phospho peptide.

Contact information

Orders: order@immunoway.com
 Support: tech@immunoway.com
 Telephone: 877-594-3616 (Toll Free), 408-747-0185
 Website: <http://www.immunoway.com>
 Address: 2200 Ringwood Ave San Jose, CA 95131 USA



Please scan the QR code to access additional product information:
CHOP (Phospho Ser30) Rabbit pAb

For Research Use Only. Not for Use in Diagnostic Procedures.

[Antibody](#) | [ELISA Kits](#) | [Protein](#) | [Reagents](#)