

SLP-76 (Phospho Tyr128) Rabbit pAb

CatalogNo: YP0801 **Orthogonal Validated** 

Key Features

Host Species

- Rabbit

Reactivity

- Human, Mouse, Rat

Applications

- WB, IHC, IF, ELISA

MW

- 75kD (Observed)

Isotype

- IgG

Storage

Storage* -15°C to -25°C/1 year (Do not lower than -25°C)**Formulation** Liquid in PBS containing 50% glycerol, 0.5% BSA and 0.02% sodium azide.

Recommended Dilution Ratios

WB 1:500-1:2000**IHC 1:100-1:300****ELISA 1:5000****IF 1:50-200**

Basic Information

Clonality Polyclonal

Immunogen Information

Immunogen The antiserum was produced against synthesized peptide derived from human SLP-76 around the phosphorylation site of Tyr128. AA range:94-143

Specificity

Phospho-SLP-76 (Y128) Polyclonal Antibody detects endogenous levels of SLP-76 protein only when phosphorylated at Y128. The name of modified sites may be influenced by many factors, such as species (the modified site was not originally found in human samples) and the change of protein sequence (the previous protein sequence is incomplete, and the protein sequence may be prolonged with the development of protein sequencing technology). When naming, we will use the "numbers" in historical reference to keep the sites consistent with the reports. The antibody binds to the following modification sequence (lowercase letters are modification sites):GDyES

| Target Information

Gene name LCP2

Protein Name Lymphocyte cytosolic protein 2

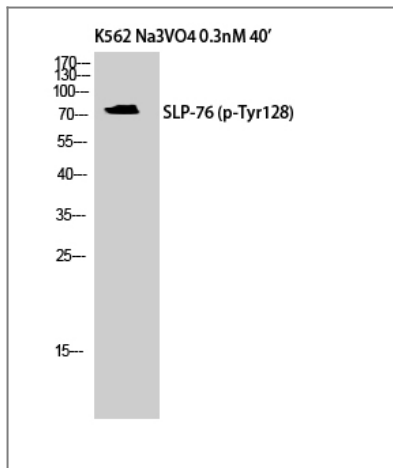
Organism	Gene ID	UniProt ID
Human	3937;	Q13094;
Mouse	16822;	Q60787;

Cellular Localization Cytoplasm .

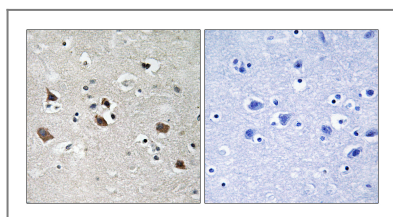
Tissue specificity Highly expressed in spleen, thymus and peripheral blood leukocytes. Highly expressed also in T-cell and monocytic cell lines, expressed at lower level in B-cell lines. Not detected in fibroblast or neuroblastoma cell lines.

Function Domain:The SH2 domain mediates interaction with SHB.,Function:Involved in T-cell antigen receptor mediated signaling.,PTM:Phosphorylated after T-cell receptor activation by ZAP-70.,similarity:Contains 1 SAM (sterile alpha motif) domain.,similarity:Contains 1 SH2 domain.,subunit:Interacts with SLA. Interacts with CBLB (By similarity). Interacts with the adapter proteins GRB2 and FYB. Interacts with SHB. Interacts with PRAM1.,tissue specificity:Highly expressed in spleen, thymus, and peripheral blood leukocytes. Highly expressed also in T-cell and monocytic cell lines, expressed at lower level in B-cell lines. Not detected in fibroblast or neuroblasatoma cell lines.,

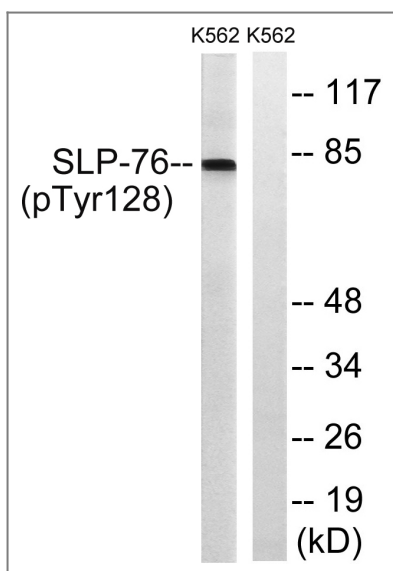
| Validation Data



Western Blot analysis of K562 cells using Phospho-SLP-76 (Y128) Polyclonal Antibody



Immunohistochemistry analysis of paraffin-embedded human brain, using SLP-76 (Phospho-Tyr128) Antibody. The picture on the right is blocked with the phospho peptide.



Western blot analysis of lysates from K562 cells treated with Na3VO4 0.3nM 40', using SLP-76 (Phospho-Tyr128) Antibody. The lane on the right is blocked with the phospho peptide.

Contact information

Orders: order@immunoway.com
 Support: tech@immunoway.com
 Telephone: 877-594-3616 (Toll Free), 408-747-0185
 Website: <http://www.immunoway.com>
 Address: 2200 Ringwood Ave San Jose, CA 95131 USA



Please scan the QR code to access additional product information:
SLP-76 (Phospho-Tyr128) Rabbit pAb