

# MSK2 (Phospho Thr568) Rabbit pAb

CatalogNo: YP0792 **Orthogonal Validated** 

## Key Features

### Host Species

- Rabbit

### Reactivity

- Human, Mouse

### Applications

- WB, IHC, IF, ELISA

### MW

- 95kD (Observed)

### Isotype

- IgG

## Storage

**Storage\*** -15°C to -25°C/1 year (Do not lower than -25°C)**Formulation** Liquid in PBS containing 50% glycerol, 0.5% BSA and 0.02% sodium azide.

## Recommended Dilution Ratios

**WB 1:500-1:2000****IHC 1:100-1:300****ELISA 1:40000****IF 1:50-200**

## Basic Information

**Clonality** Polyclonal

## Immunogen Information

**Immunogen** The antiserum was produced against synthesized peptide derived from human MSK2 around the phosphorylation site of Thr568. AA range: 531-580

## Specificity

Phospho-MSK2 (T568) Polyclonal Antibody detects endogenous levels of MSK2 protein only when phosphorylated at T568. The name of modified sites may be influenced by many factors, such as species (the modified site was not originally found in human samples) and the change of protein sequence (the previous protein sequence is incomplete, and the protein sequence may be prolonged with the development of protein sequencing technology). When naming, we will use the "numbers" in historical reference to keep the sites consistent with the reports. The antibody binds to the following modification sequence (lowercase letters are modification sites):MQtPC

## Target Information

**Gene name** RPS6KA4

**Protein Name** Ribosomal protein S6 kinase alpha-4

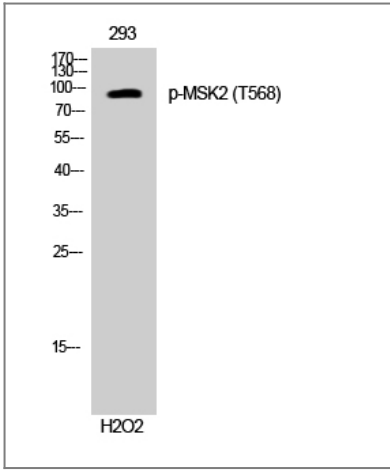
Organism	Gene ID	UniProt ID
Human	<a href="#">8986</a> ;	<a href="#">O75676</a> ;
Mouse	<a href="#">56613</a> ;	<a href="#">Q9Z2B9</a> ;

**Cellular Localization** Nucleus .

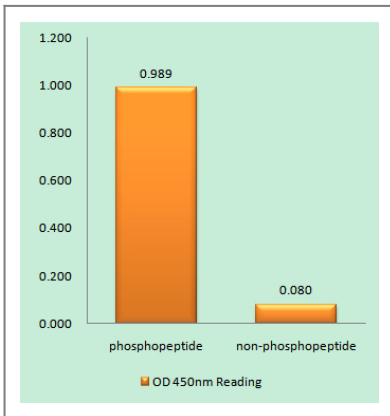
**Tissue specificity** Blood,Brain,Placenta,

**Function** Catalytic activity:ATP + a protein = ADP + a phosphoprotein.,cofactor:Magnesium.,enzyme regulation:Appears to be activated by multiple phosphorylations on threonine and serine residues. ERK1/2 and p38 kinases may play a role in this process.,Function:Serine/threonine kinase that may play a role in mediating the growth-factor and stress induced activation of the transcription factor CREB. Essential role in the control of RELA transcriptional activity in response to TNF. Phosphorylates 'Ser-10' of histone H3 in response to mitogenics, stress stimuli and epidemal growth-factor (EGF) and result in the transcriptional activation of several immediate early genes, including proto-oncogenes FOS and JUN (By similarity). Mediates the mitogen- and stress-induced phosphorylation of high mobility group protein 14 (HMG-14).,miscellaneous:Enzyme activity requires the presence of both kinase domains.,similarity:Belongs to the protein kinase superfamily.,similarity:Belongs to the protein kinase superfamily. AGC Ser/Thr protein kinase family. S6 kinase subfamily.,similarity:Contains 1 AGC-kinase C-terminal domain.,similarity:Contains 2 protein kinase domains.,subunit:Forms a complex with either ERK1 or ERK2 in quiescent cells which transiently dissociates following mitogenic stimulation. Also associates with MAPK14/p38-alpha. Activated RPS6KA4 associates with and phosphorylates the NF-kappa-B p65 subunit RELA.,

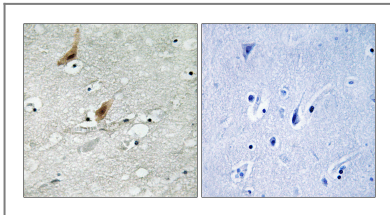
## Validation Data



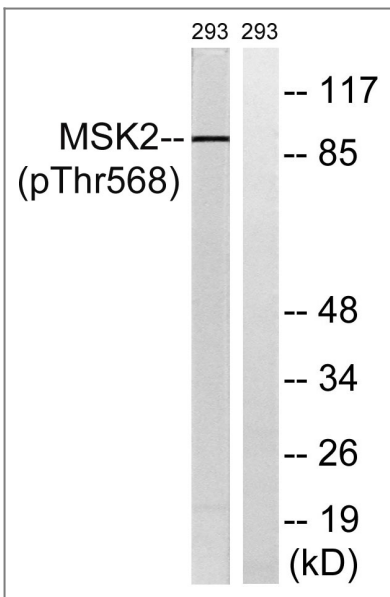
Western Blot analysis of 293 cells using Phospho-MSK2 (T568) Polyclonal Antibody cells nucleus extracted by Minute TM Cytoplasmic and Nuclear Fractionation kit (SC-003, Inventbiotech, MN, USA).



Enzyme-Linked Immunosorbent Assay (Phospho-ELISA) for Immunogen Phosphopeptide (Phospho-left) and Non-Phosphopeptide (Phospho-right), using MSK2 (Phospho-Thr568) Antibody



Immunohistochemistry analysis of paraffin-embedded human brain, using MSK2 (Phospho-Thr568) Antibody. The picture on the right is blocked with the phospho peptide.



Western blot analysis of lysates from 293 cells treated with H2O2 100uM 15', using MSK2 (Phospho-Thr568) Antibody. The lane on the right is blocked with the phospho peptide.

Orders: order@immunoway.com  
Support: tech@immunoway.com  
Telephone: 877-594-3616 (Toll Free), 408-747-0185  
Website: http://www.immunoway.com  
Address: 2200 Ringwood Ave San Jose, CA 95131 USA



Please scan the QR code to access additional product information:  
**MSK2 (Phospho Thr568) Rabbit pAb**

---

For Research Use Only. Not for Use in Diagnostic Procedures.

[Antibody](#) | [ELISA Kits](#) | [Protein](#) | [Reagents](#)