

IL-13R α 1 (Phospho Tyr405) Rabbit pAb

CatalogNo: YP0558 **Orthogonal Validated** 

Key Features

Host Species

- Rabbit

Reactivity

- Human, Mouse, Rat

Applications

- WB, IF, ELISA

MW

- 49kD (Observed)

Isotype

- IgG

Storage

Storage* -15°C to -25°C/1 year (Do not lower than -25°C)**Formulation** Liquid in PBS containing 50% glycerol, 0.5% BSA and 0.02% sodium azide.

Recommended Dilution Ratios

WB 1:500-1:2000**IF 1:200-1:1000****ELISA 1:10000****Not yet tested in other applications.**

Basic Information

Clonality Polyclonal

Immunogen Information

Immunogen The antiserum was produced against synthesized peptide derived from human IL-13R alpha1 around the phosphorylation site of Tyr405. AA range:371-420

Specificity

Phospho-IL-13R α 1 (Y405) Polyclonal Antibody detects endogenous levels of IL-13R α 1 protein only when phosphorylated at Y405. The name of modified sites may be influenced by many factors, such as species (the modified site was not originally found in human samples) and the change of protein sequence (the previous protein sequence is incomplete, and the protein sequence may be prolonged with the development of protein sequencing technology). When naming, we will use the "numbers" in historical reference to keep the sites consistent with the reports. The antibody binds to the following modification sequence (lowercase letters are modification sites):DlyEK

| Target Information

Gene name IL13RA1

Protein Name Interleukin-13 receptor subunit alpha-1

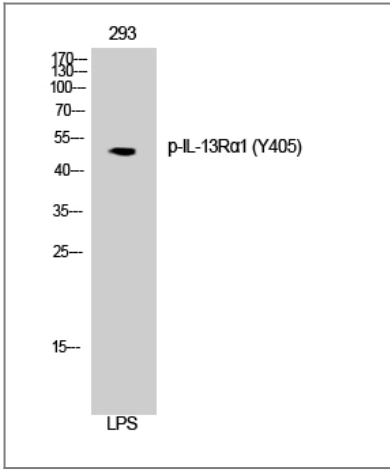
Organism	Gene ID	UniProt ID
Human	3597 ;	P78552 ;
Mouse	16164 ;	O09030 ;

Cellular Localization Membrane; Single-pass type I membrane protein.

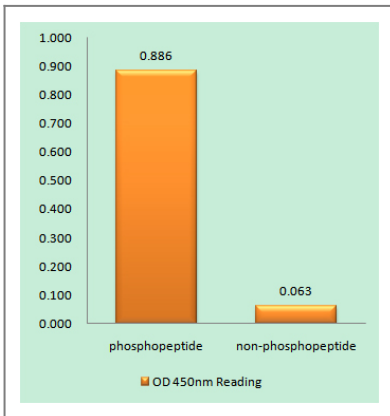
Tissue specificity Ubiquitous. Highest levels in heart, liver, skeletal muscle and ovary; lowest levels in brain, lung and kidney. Also found in B-cells, T-cells and endothelial cells.

Function Domain:The box 1 motif is required for JAK interaction and/or activation.,Domain:The WSXWS motif appears to be necessary for proper protein folding and thereby efficient intracellular transport and cell-surface receptor binding.,Function:Binds IL13 with a low affinity. Together with IL4R-alpha can form a functional receptor for IL13. Also serves as an alternate accessory protein to the common cytokine receptor gamma chain for IL4 signaling, but cannot replace the function of gamma C in allowing enhanced IL2 binding activity.,similarity:Belongs to the type I cytokine receptor family. Type 5 subfamily.,subunit:Interleukin 13 receptor is a complex of IL4R, IL13RA1, and possibly other components. Interacts with TRAF3IP1.,tissue specificity:Ubiquitous. Highest levels in heart, liver, skeletal muscle and ovary; lowest levels in brain, lung and kidney. Also found in B-cells, T-cells and endothelial cells.,

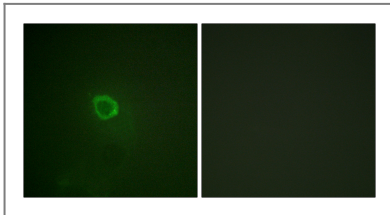
| Validation Data



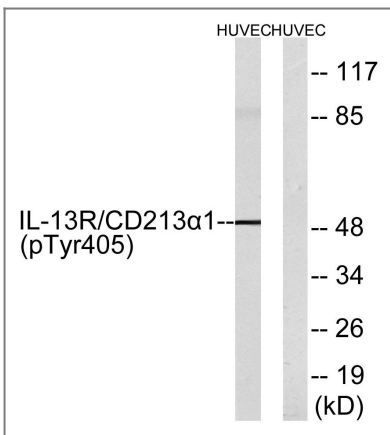
Western Blot analysis of 3T3 cells using Phospho-IL-13R α 1 (Y405) Polyclonal Antibody



Enzyme-Linked Immunosorbent Assay (Phospho-ELISA) for Immunogen Phosphopeptide (Phospho-left) and Non-Phosphopeptide (Phospho-right), using IL-13R alpha1 (Phospho-Tyr405) Antibody



Immunofluorescence analysis of HepG2 cells, using IL-13R alpha1 (Phospho-Tyr405) Antibody. The picture on the right is blocked with the phospho peptide.



Western blot analysis of lysates from HUVEC cells treated with serum 20% 15', using IL-13R alpha1 (Phospho-Tyr405) Antibody. The lane on the right is blocked with the phospho peptide.

Contact information

Orders: order@immunoway.com
Support: tech@immunoway.com
Telephone: 877-594-3616 (Toll Free), 408-747-0185
Website: http://www.immunoway.com
Address: 2200 Ringwood Ave San Jose, CA 95131 USA



Please scan the QR code to access additional product information:
IL-13R α 1 (Phospho Tyr405) Rabbit pAb

For Research Use Only. Not for Use in Diagnostic Procedures.

[Antibody](#) | [ELISA Kits](#) | [Protein](#) | [Reagents](#)