

PKC δ (Phospho Tyr64) Rabbit pAb

CatalogNo: YP0433 Orthogonal Validated 

Key Features

Host Species

- Rabbit

Reactivity

- Human, Mouse, Rat

Applications

- WB, IHC, ELISA

MW

- 77kD (Observed)

Isotype

- IgG

Storage

Storage* -15°C to -25°C/1 year (Do not lower than -25°C)

Formulation Liquid in PBS containing 50% glycerol, 0.5% BSA and 0.02% sodium azide.

Recommended Dilution Ratios

WB 1:500-2000

IHC 1:50-300

ELISA 5000-1:20000

Basic Information

Clonality Polyclonal

Immunogen Information

Immunogen The antiserum was produced against synthesized peptide derived from human PKCD around the phosphorylation site of Tyr64. AA range:30-79

Specificity Phospho-PKC δ (Y64) Polyclonal Antibody detects endogenous levels of PKC δ protein only when phosphorylated at Y64. The name of modified sites may be influenced by many factors, such as species (the modified site was not originally found in human samples) and the change of protein sequence (the previous protein sequence is incomplete, and the protein sequence may be prolonged with the development of protein sequencing technology). When naming, we will use the "numbers" in historical reference to keep the sites consistent with the reports. The antibody binds to the following modification sequence (lowercase letters are modification sites):HlyEG

| Target Information

Gene name PRKCD

Protein Name Protein kinase C delta type

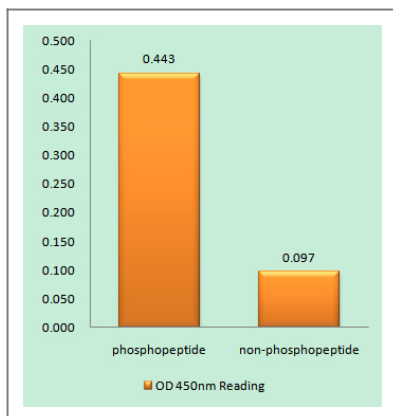
Organism	Gene ID	UniProt ID
Human	5580 ;	Q05655 ;
Mouse	18753 ;	P28867 ;
Rat	170538 ;	P09215 ;

Cellular Localization Cytoplasm . Cytoplasm, perinuclear region . Nucleus . Cell membrane ; Peripheral membrane protein . Mitochondrion . Endomembrane system . Translocates to the mitochondria upon apoptotic stimulation. Upon activation, translocates to the plasma membrane followed by partial location to the endolysosomes (PubMed:17303575). .

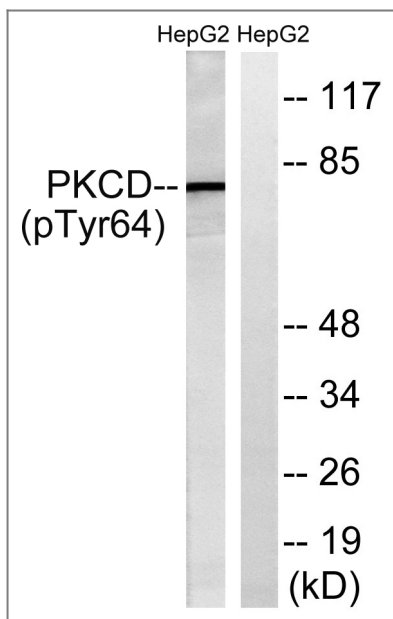
Tissue specificity Epithelium,Hippocampus,Liver,Platelet,Skin,

Function Catalytic activity:ATP + a protein = ADP + a phosphoprotein.,Domain:The C1 domain, containing the phorbol ester/DAG-type region 1 (C1A) and 2 (C1B), is the diacylglycerol sensor.,Domain:The C2 domain is a non-calcium binding domain. It binds proteins containing phosphotyrosine in a sequence-specific manner.,enzyme regulation:Three specific sites; Thr-507 (activation loop of the kinase domain), Ser-645 (turn motif) and Ser-664 (hydrophobic region), need to be phosphorylated for its full activation.,Function:This is calcium-independent, phospholipid-dependent, serine- and threonine-specific enzyme. PKC is activated by diacylglycerol which in turn phosphorylates a range of cellular proteins. PKC also serves as the receptor for phorbol esters, a class of tumor promoters. May play a role in antigen-dependent control of B-cell function. Phosphorylates MUC1 in the C-terminal and regulates the interaction between MUC1 and beta-catenin.,PTM:Phosphorylated on Thr-507, within the activation loop. Autophosphorylated and/or phosphorylated. Although the Thr-507 phosphorylation occurs it is not a prerequisite for enzymatic activity.,similarity:Belongs to the protein kinase superfamily. AGC Ser/Thr protein kinase family. PKC subfamily.,similarity:Contains 1 AGC-kinase C-terminal domain.,similarity:Contains 1 C2 domain.,similarity:Contains 1 protein kinase domain.,similarity:Contains 2 phorbol-ester/DAG-type zinc fingers.,subunit:Interacts with PDK1, RAD9A, CDCP1 and MUC1.,

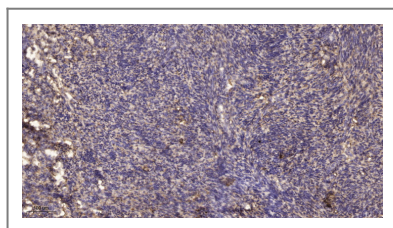
| Validation Data



Enzyme-Linked Immunosorbent Assay (Phospho-ELISA) for Immunogen Phosphopeptide (Phospho-left) and Non-Phosphopeptide (Phospho-right), using PKCD (Phospho-Tyr64) Antibody



Western blot analysis of lysates from HepG2 cells treated with PMA 125ng/ml 30', using PKCD (Phospho-Tyr64) Antibody. The lane on the right is blocked with the phospho peptide.



Immunohistochemical analysis of paraffin-embedded human uterus. 1, Antibody was diluted at 1:200(4° overnight). 2, Tris-EDTA,pH9.0 was used for antigen retrieval. 3,Secondary antibody was diluted at 1:200(room temperature, 45min).

Contact information

Orders: order@immunoway.com
 Support: tech@immunoway.com
 Telephone: 877-594-3616 (Toll Free), 408-747-0185
 Website: <http://www.immunoway.com>
 Address: 2200 Ringwood Ave San Jose, CA 95131 USA



Please scan the QR code to access additional product information:
PKC δ (Phospho Tyr64) Rabbit pAb