

STAT6 (Phospho Thr645) Rabbit pAb

CatalogNo: YP0255

Comparable Abs 

Key Features

Host Species

- Rabbit

Reactivity

- Human, Mouse, Rat

Applications

- WB, IHC, IF, IP, ELISA

MW

- 94kD (Calculated)

Isotype

- IgG

Recommended Dilution Ratios

WB 1:500-1:2000**IHC 1:100-1:300****IP 2-5 ug/mg lysate****ELISA 1:10000****IF 1:50-200**

Storage

Storage*

-15°C to -25°C/1 year (Do not lower than -25°C)

Formulation

Liquid in PBS containing 50% glycerol, 0.5% BSA and 0.02% sodium azide.

Basic Information

Clonality

Polyclonal

Immunogen Information

Immunogen

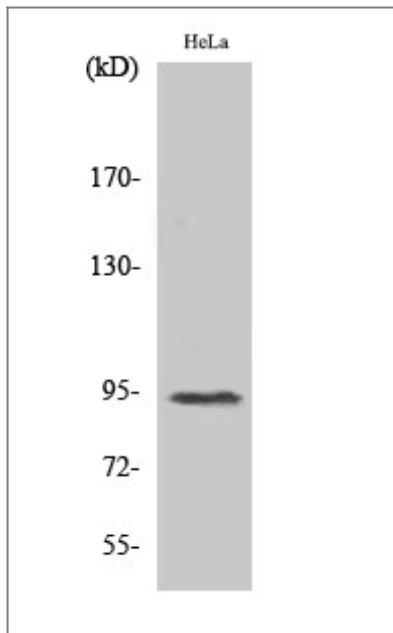
The antiserum was produced against synthesized peptide derived from human STAT6 around the phosphorylation site of Thr645. AA range: 612-661

Specificity Phospho-Stat6 (T645) Polyclonal Antibody detects endogenous levels of Stat6 protein only when phosphorylated at T645. The name of modified sites may be influenced by many factors, such as species (the modified site was not originally found in human samples) and the change of protein sequence (the previous protein sequence is incomplete, and the protein sequence may be prolonged with the development of protein sequencing technology). When naming, we will use the "numbers" in historical reference to keep the sites consistent with the reports. The antibody binds to the following modification sequence (lowercase letters are modification sites):PATIK

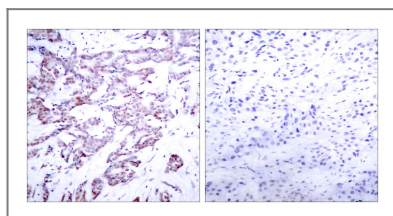
| Target Information

Gene name	STAT6		
Protein Name	Signal transducer and activator of transcription 6		
	Organism	Gene ID	UniProt ID
	Human	6778 ;	P42226 ;
	Mouse	20852 ;	P52633 ;
Cellular Localization	Cytoplasm. Nucleus. Translocated into the nucleus in response to phosphorylation.		
Tissue specificity	Uterus,		
Function	Function:Carries out a dual Function: signal transduction and activation of transcription. Involved in interleukin-4 signalling.,PTM:Tyrosine phosphorylated following stimulation by IL-4 and IL-3.,similarity:Belongs to the transcription factor STAT family.,similarity:Contains 1 SH2 domain.,subcellular location:Translocated into the nucleus in response to phosphorylation.,subunit:Forms a homodimer or a heterodimer with a related family member (By similarity). Interacts with NCOA1 via its C-terminal LXXLL motif.,		

| Validation Data



Western Blot analysis of various cells using Phospho-Stat6 (T645) Polyclonal Antibody



Immunohistochemistry analysis of paraffin-embedded human breast carcinoma, using STAT6 (Phospho-Thr645) Antibody. The picture on the right is blocked with the phospho peptide.

Contact information

Orders: order@immunoway.com
 Support: tech@immunoway.com
 Telephone: 877-594-3616 (Toll Free), 408-747-0185
 Website: <http://www.immunoway.com>
 Address: 2200 Ringwood Ave San Jose, CA 95131 USA



Please scan the QR code to access additional product information:
STAT6 (Phospho Thr645) Rabbit pAb

For Research Use Only. Not for Use in Diagnostic Procedures.

[Antibody](#) | [ELISA Kits](#) | [Protein](#) | [Reagents](#)