

PKC (Phospho Thr497) Rabbit pAb

CatalogNo: YP0227 Orthogonal Validated 

Key Features

Host Species

- Rabbit

Reactivity

- Human, Mouse, Rat

Applications

- WB, IHC, IF, ELISA

MW

- 83kD (Observed)

Isotype

- IgG

Storage

Storage* -15°C to -25°C/1 year (Do not lower than -25°C)

Formulation Liquid in PBS containing 50% glycerol, 0.5% BSA and 0.02% sodium azide.

Recommended Dilution Ratios

WB 1:500-1:2000

IHC 1:100-1:300

IF 1:200-1:1000

ELISA 1:40000

Not yet tested in other applications.

Basic Information

Clonality Polyclonal

Immunogen Information

Immunogen The antiserum was produced against synthesized peptide derived from human PKC-pan around the phosphorylation site of Thr497. AA range: 623-672

Specificity

Phospho-PKC (T497) Polyclonal Antibody detects endogenous levels of PKC protein only when phosphorylated at T497. The name of modified sites may be influenced by many factors, such as species (the modified site was not originally found in human samples) and the change of protein sequence (the previous protein sequence is incomplete, and the protein sequence may be prolonged with the development of protein sequencing technology). When naming, we will use the "numbers" in historical reference to keep the sites consistent with the reports. The antibody binds to the following modification sequence (lowercase letters are modification sites):TStFC

Target Information

Gene name PRKCA/PRKCB/PRKCD/PRKCE/PRKCG/PRKCH/PRKCQ/PRKCZ

Protein Name Protein kinase C alpha type/Protein kinase C beta type/Protein kinase C delta type/Protein kinase C epsilon type/Protein kinase C gamma type/Protein kinase C eta type/Protein kinase C theta type/Protein kinase C zeta type

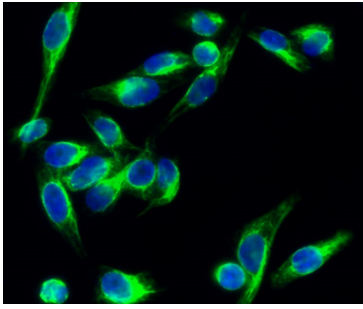
| Organism | Gene ID | UniProt ID |
|----------|--|--|
| Human | 5578 ; 5579 ; 5580 ; 5581 ; 5582 ; 5583 ; 5588 ; 5590 ; | P17252 ; P05771 ; Q05655 ; Q02156 ; P05129 ; P24723 ; Q04759 ; Q05513 ; |
| Mouse | 18750 ; 18751 ; 18753 ; 18754 ; | |
| Rat | 25023 ; 170538 ; 29340 ; | P05696 ; P68403 ; P09215 ; P09216 ; |

Cellular Localization Cytoplasm . Cell membrane ; Peripheral membrane protein . Mitochondrion membrane ; Peripheral membrane protein . Nucleus .

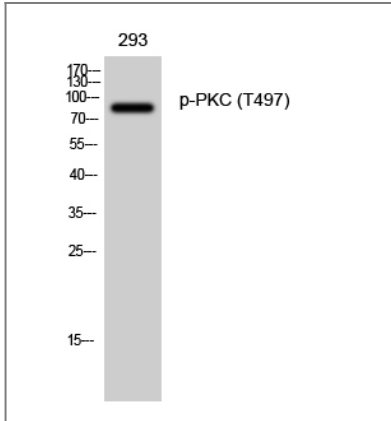
Tissue specificity Blood,Brain,Epithelium,Lung,Platelet,

Function Catalytic activity:ATP + a protein = ADP + a phosphoprotein.,cofactor:Binds 3 calcium ions per subunit. The ions are bound to the C2 domain.,Function:PKC is activated by diacylglycerol which in turn phosphorylates a range of cellular proteins. PKC also serves as the receptor for phorbol esters, a class of tumor promoters.,Function:This is a calcium-activated, phospholipid-dependent, serine- and threonine-specific enzyme. May play a role in cell motility by phosphorylating CSPG4.,similarity:Belongs to the protein kinase superfamily.,similarity:Belongs to the protein kinase superfamily. AGC Ser/Thr protein kinase family. PKC subfamily.,similarity:Contains 1 AGC-kinase C-terminal domain.,similarity:Contains 1 C2 domain.,similarity:Contains 1 protein kinase domain.,similarity:Contains 2 phorbol-ester/DAG-type zinc fingers.,subunit:Interacts with ADAP1/CENTA1, CSPG4 and PRKCABP. Binds to SDPR in the presence of phosphatidylserine.,

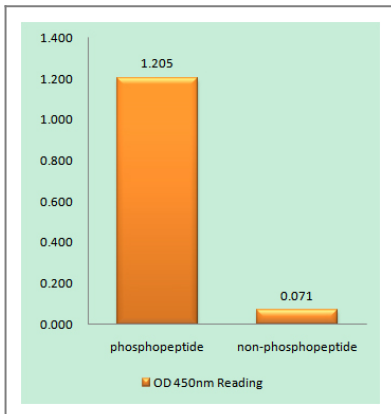
Validation Data



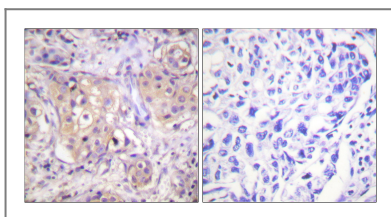
Immunofluorescence analysis of HeLa cell. 1, PKC (phospho Thr497) Polyclonal Antibody (green) was diluted at 1:200 (4° overnight). 2, Goat Anti Rabbit Alexa Fluor 488 Catalog: RS3211 was diluted at 1:1000 (room temperature, 50min). 3 DAPI (blue) 10min.



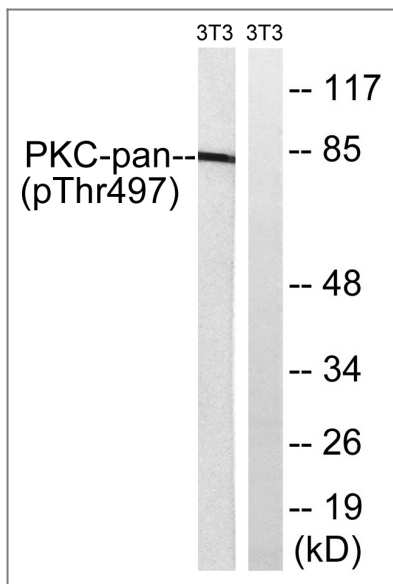
Western Blot analysis of 293 cells using Phospho-PKC (T497) Polyclonal Antibody diluted at 1:500



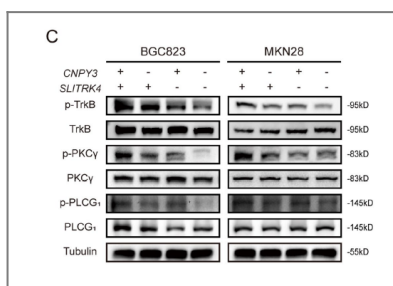
Enzyme-Linked Immunosorbent Assay (Phospho-ELISA) for Immunogen Phosphopeptide (Phospho-left) and Non-Phosphopeptide (Phospho-right), using PKC-pan (Phospho-Thr497) Antibody



Immunohistochemistry analysis of paraffin-embedded human breast carcinoma, using PKC-pan (Phospho-Thr497) Antibody. The picture on the right is blocked with the phospho peptide.



Western blot analysis of lysates from NIH/3T3 cells treated with PMA 250ng/ml 15', using PKC-pan (Phospho-Thr497) Antibody. The lane on the right is blocked with the phospho peptide.



The SLITRK4-CNPY3 axis promotes liver metastasis of gastric cancer by enhancing the endocytosis and recycling of TrkB in tumour cells CELLULAR ONCOLOGY Li Jun WB Human BGC823 cell, MKN28 cell

Contact information

Orders: order@immunoway.com
 Support: tech@immunoway.com
 Telephone: 877-594-3616 (Toll Free), 408-747-0185
 Website: <http://www.immunoway.com>
 Address: 2200 Ringwood Ave San Jose, CA 95131 USA



Please scan the QR code to access additional product information:
PKC (Phospho Thr497) Rabbit pAb

For Research Use Only. Not for Use in Diagnostic Procedures.

[Antibody](#) | [ELISA Kits](#) | [Protein](#) | [Reagents](#)