

Calnexin (Phospho Ser583) Rabbit pAb

CatalogNo: YP0041 **Orthogonal Validated** 

Key Features

Host Species

- Rabbit

Reactivity

- Human, Mouse, Rat

Applications

- WB, IHC, IF, ELISA

MW

- 90kD (Observed)

Isotype

- IgG

Storage

Storage* -15°C to -25°C/1 year (Do not lower than -25°C)**Formulation** Liquid in PBS containing 50% glycerol, 0.5% BSA and 0.02% sodium azide.

Recommended Dilution Ratios

WB 1:500-1:2000**IHC 1:100-1:300****IF 1:200-1:1000****ELISA 1:5000****Not yet tested in other applications.**

Basic Information

Clonality Polyclonal

Immunogen Information

Immunogen The antiserum was produced against synthesized peptide derived from human Calnexin around the phosphorylation site of Ser583. AA range: 543-592

Specificity

Phospho-Calnexin (S583) Polyclonal Antibody detects endogenous levels of Calnexin protein only when phosphorylated at S583. The name of modified sites may be influenced by many factors, such as species (the modified site was not originally found in human samples) and the change of protein sequence (the previous protein sequence is incomplete, and the protein sequence may be prolonged with the development of protein sequencing technology). When naming, we will use the "numbers" in historical reference to keep the sites consistent with the reports. The antibody binds to the following modification sequence (lowercase letters are modification sites):NRsPR

| Target Information

Gene name CANX

Protein Name Calnexin

Organism	Gene ID	UniProt ID
Human	821 ;	P27824 ;
Mouse	12330 ;	P35564 ;
Rat	29144 ;	P35565 ;

Cellular Localization

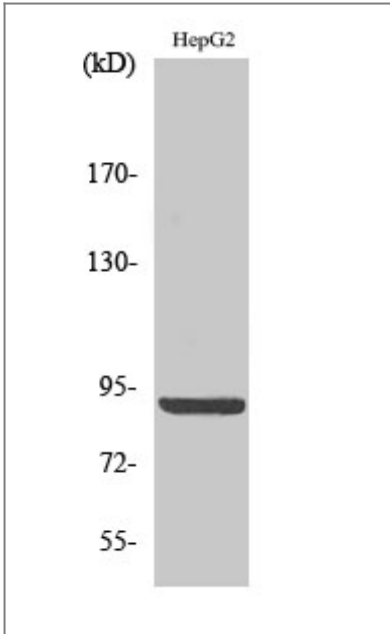
Endoplasmic reticulum membrane ; Single-pass type I membrane protein . Endoplasmic reticulum . Melanosome . Identified by mass spectrometry in melanosome fractions from stage I to stage IV (PubMed:12643545, PubMed:17081065). The palmitoylated form preferentially localizes to the perinuclear rough ER (PubMed:22314232). .

Tissue specificity B-cell lymphoma, Epithelium, Fibroblast, Keratinocyte, Kidney, Liver, Lymph, Placenta, Platelet,

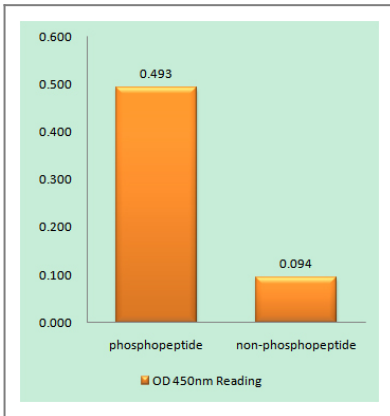
Function

Function: Calcium-binding protein that interacts with newly synthesized glycoproteins in the endoplasmic reticulum. It may act in assisting protein assembly and/or in the retention within the ER of unassembled protein subunits. It seems to play a major role in the quality control apparatus of the ER by the retention of incorrectly folded proteins., online information: Calnexin entry, similarity: Belongs to the calreticulin family., subcellular location: Identified by mass spectrometry in melanosome fractions from stage I to stage IV.,

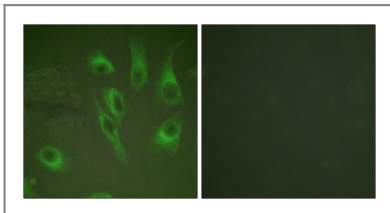
| Validation Data



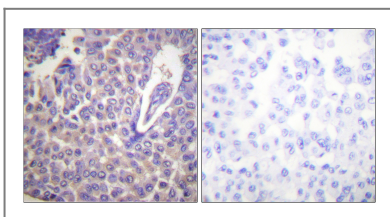
Western Blot analysis of various cells using Phospho-Calnexin (S583) Polyclonal Antibody diluted at 1:2000



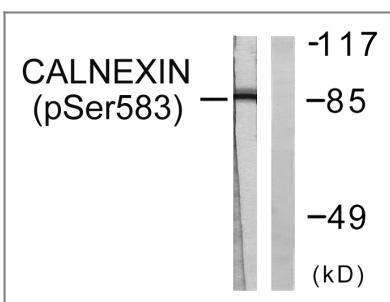
Enzyme-Linked Immunosorbent Assay (Phospho-ELISA) for Immunogen Phosphopeptide (Phospho-left) and Non-Phosphopeptide (Phospho-right), using Calnexin (Phospho-Ser583) Antibody



Immunofluorescence analysis of HeLa cells, using Calnexin (Phospho-Ser583) Antibody. The picture on the right is blocked with the phospho peptide.



Immunohistochemistry analysis of paraffin-embedded human breast carcinoma, using Calnexin (Phospho-Ser583) Antibody. The picture on the right is blocked with the phospho peptide.



Western blot analysis of lysates from HeLa cells treated with EGF 200ng/ml 30', using Calnexin (Phospho-Ser583) Antibody. The lane on the right is blocked with the phospho peptide.

| Contact information

Orders: order@immunoway.com
Support: tech@immunoway.com
Telephone: 877-594-3616 (Toll Free), 408-747-0185
Website: <http://www.immunoway.com>
Address: 2200 Ringwood Ave San Jose, CA 95131 USA



Please scan the QR code to access additional product information:
Calnexin (Phospho Ser583) Rabbit pAb

For Research Use Only. Not for Use in Diagnostic Procedures.

[Antibody](#) | [ELISA Kits](#) | [Protein](#) | [Reagents](#)